

## E-learning for EBS E Trailer

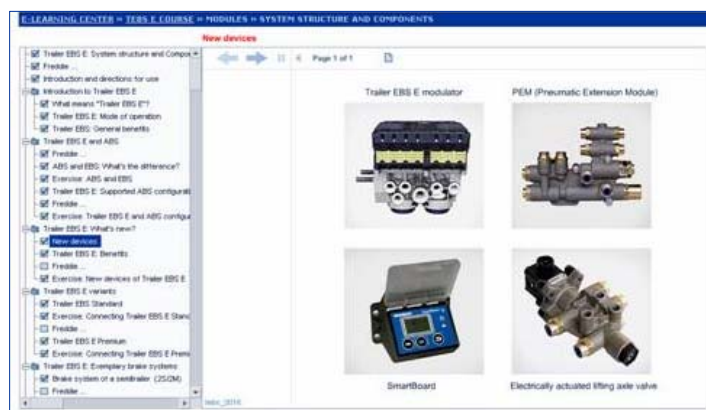
The high demand for our new brake system TEBS E for trailer vehicles highlights the importance of this system for the coming years.

It is now up to workshops to obtain suitable diagnostic systems/solutions to be able to offer maintenance and service, if required.

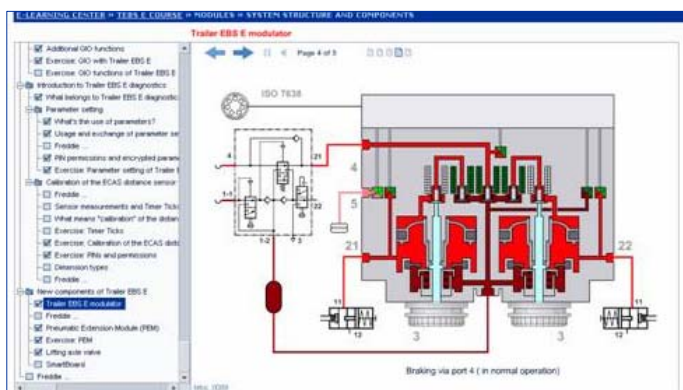
The structure and function of the new system are very different to the previous version, meaning that staff training is required for preparatory purposes. Besides conventional training at one of our technical training sessions, we also now offer a new e-learning module for this system.

### The course covers:

- The structure and function of WABCO TEBS E
- How the system and components function
- Procedure for replacing the modulator and commissioning using WABCO PC diagnosis.



No previous knowledge is required for this online training course. You can start as soon as you have registered on the e-learning portal at <http://wbt.wabco.info> and purchased the training course via your distributor under **product number 200 300 104 0** or simply by credit card.



The course costs €175. Depending on your previous knowledge, approx. 3 to 5 hours are required to complete this course.

After taking the final test you will receive the "PIN 2" entitlement to use limited special functions of the diagnostic software.

**WABCO E-LEARNING: Your direct link to WABCO knowledge and skills on the commercial vehicle market**