

Overview WABCO Air Dryer Cartridges

WABCO distributes a variety of air dryer cartridges, which often differ, besides few technical data, in different design or labelling only.

With this Market Information you will get an overview of the significant technical features and as stocking proposal a table with comparable part numbers.

Mechanical Properties

WABCO uses desiccant with excellent drying performance and high mechanical reliability to dry compressed air supplied by the compressor. Compared to common granulate, our desiccant operates more safely and is recyclable. Due to the fact that all WABCO cartridges use the same desiccant, there is no significant difference. Your WABCO partner guarantees the return of used cartridges.



- A considerable requirement regarding cartridges is the pressure resistance, suitable to the operation pressure of the vehicle. There are two types: Standard air dryer cartridges with a pressure range up to 13 bar and the high-pressure cartridge with up to 20 bar.
- With a special M 42x1,5 connection thread the high-pressure cartridge is prevented from being interchanged with a standard cartridge. Depending on the vehicle manufacturer, the standard pressure range either uses M 39x1,5 or G 1 1/4".
- As a special feature WABCO offers the "Air System Protector" with coalescing filter. With this innovative WABCO technology, air coming from the compressor is cleaned from finest oil droplets (aerosols). This affects a higher protection for the compressed air and braking system.

The figures below demonstrate the difference: Both cartridges have a service time of 60000 km. Whilst the standard cartridge's air outlet to the brake system has traces of oil (fig. 1), the Air System Protector on fig. 2 shows no contamination.

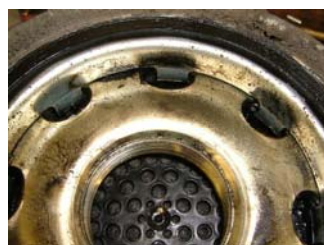


Figure 1:
without coalescing filter after
60.000 km



Figure 2:
Air System Protector with coa-
lescing filter after 60.000 km

Reference	Brand	Cartridge - Type	WABCO Order number
000 429 33 95	DaimlerChrysler	Up to 13 bar. Thread M 39x1.5	432 410 222 7
000 429 37 95	DaimlerChrysler	Up to 13 bar. Thread M 39x1.5	432 410 222 7
000 429 48 95	DaimlerChrysler / EVOBUS	High-pressure up to 20 bar. Thread M 42x1.5	432 410 220 2
000 429 56 95	DaimlerChrysler / EVOBUS	Air System Protector WABCO. Up to 13 bar. Thread M 39x1.5	432 901 223 2
11017455	NEOPLAN	Up to 13 bar. Thread M 39x1.5	432 410 222 7
136873-1	MAN	Up to 13 bar. Thread M 39x1.5	432 410 222 7
1384549	SCANIA	Up to 13 bar. Thread G 1 1¼"	432 410 927 2
1504900R	DAF	Up to 13 bar. Thread M 39x1.5	432 410 222 7
174767	IVECO	Up to 13 bar. Thread M 39x1.5	432 410 222 7
177 45 98	SCANIA	Air System Protector SCANIA. Up to 13 bar. Thread G 1 1¼"	432 901 228 2
20557234	VOLVO	Coalescence Cartridge VOLVO. Up to 13 bar. Thread M 39x1.5	432 901 223 2
3090288	VOLVO	Up to 13 bar. Thread M 39x1.5	432 410 222 7
3351454 R1	IVECO	Up to 13 bar. Thread M 39x1.5	432 410 222 7
377640	SCANIA	Up to 13 bar. Thread M 39x1.5	432 410 222 7
432 410 020 2	WABCO	Up to 13 bar. Thread M 39x1.5	432 410 222 7
432 410 220 2	WABCO	High-pressure up to 20 bar. Thread M 42x1.5	432 410 220 2
432 410 222 7	WABCO	Up to 13 bar. Thread M 39x1.5. Exchange cartridge	432 410 222 7
432 410 226 2	WABCO	Up to 13 bar. Thread G 1 1¼". With hexagon head SW 30	432 410 927 2
432 415 220 7	WABCO	Up to 13 bar. Thread G 1 1¼". Exchange cartridge	432 415 220 7
432 901 223 2	WABCO	Air System Protector WABCO. Up to 13 bar. Thread M 39x1.5	432 901 223 2
50 00 295 421	RENAULT	Up to 13 bar. Thread M 39x1.5	432 410 222 7
50 00 295 422	RENAULT	High-pressure up to 20 bar. Thread M 42x1.5	432 410 220 2
50 01 843 522	RENAULT	Up to 13 bar. Thread G 1 1¼"	432 415 220 7
50 21 170 070	RENAULT	Up to 13 bar. Thread M 39x1.5	432 410 222 7
50 21 170 076	RENAULT	Up to 13 bar. Thread M 39x1.5	432 410 222 7
50 21 170 077	RENAULT	Up to 13 bar. Thread G 1 1¼". With hexagon head SW 30	432 410 927 2
54 30 018 121	RENAULT	Up to 13 bar. Thread M 39x1.5	432 410 222 7
5713 52308	LIEBHERR	Up to 13 bar. Thread M 39x1.5	432 410 222 7
699387	DAF	Up to 13 bar. Thread M 39x1.5	432 410 222 7
761 176 73	TEREX-DEMAG	Up to 13 bar. Thread M 39x1.5	432 410 222 7
8 285 141 196	EVOBUS	Up to 13 bar. Thread M 39x1.5	432 410 222 7
8010002016	IRISBUS	Up to 13 bar. Thread M 39x1.5	432 410 222 7
81.52102-0008	NEOMAN	Up to 13 bar. Thread M 39x1.5	432 410 222 7
81.52102-0008	MAN	Up to 13 bar. Thread M 39x1.5	432 410 222 7
81.52102-0016	MAN / NEOMAN	High-pressure up to 20 bar. Thread M 42x1.5	432 410 220 2
81.52108-6025	MAN / NEOMAN	Air System Protector MAN. Up to 13 bar. Thread M 39x1.5	432 901 223 2
8190948	IVECO	Up to 13 bar. Thread M 39x1.5	432 410 222 7

WABCO recommends usage of the Air System Protector 432 901 223 2 instead of exchange cartridge 432 410 222 7