

WABCO numbering system for disc and drum brakes

For all new developed disc and drum brakes WABCO will use the 10 digit numbering system. All established WABCO wheelbrakes in series production will stay in parallel with the known 8 digit system. In this concern please refer to Market Info 4002 from March 2004.

New developed products use the "old" 8 digits supplemented with a starting "6" for wheel brakes and as last digit e.g. "0" for a complet device.

Example:

The product number for PAN 25-1 is **640 250 001 0**.

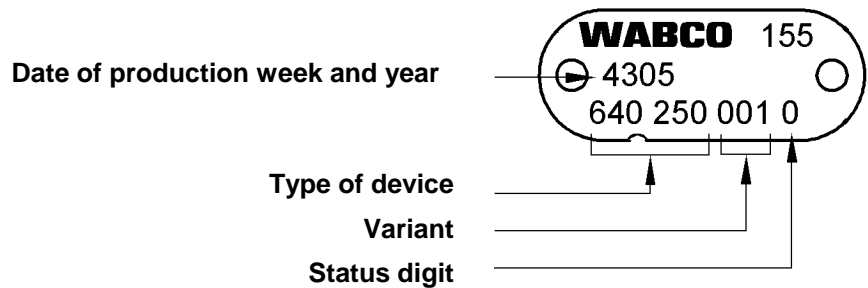
All new created repair kits will have identical first 6 digits like the concerned device and as last digit a "2".

Example:

Brake pad kits for 640 250 001 0 (PAN 25-1) are named **640 250 920 2**.

The WABCO part number is an 10-digit structure grouped into blocks of 3 3 3 1 digits.

The name plate shows the date of manufacture, type of device, variant and status digit (e.g. for new of exchange unit).



Status digit

- 0 New device (complet unit)
- 1 New device (sub module)
- 2 Repair kit or assembly
- 4 Component
- 7 Factory reconditioned unit