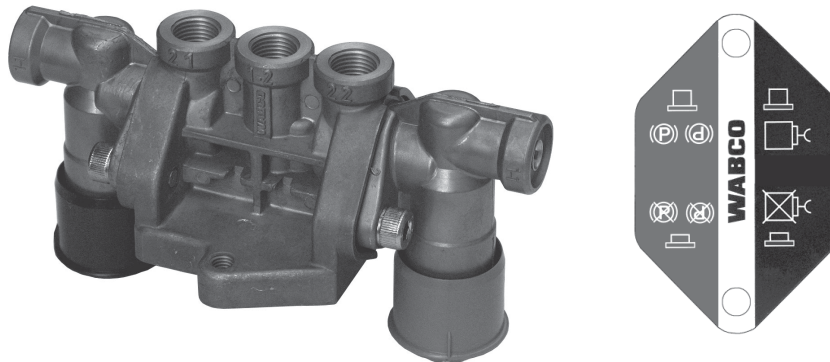


WABCO

SERVICE

Market Information

Release valve 963 001 ... 0 for trailers with integrated locking system



The right of amendment is reserved © copyright: WABCO' 2002
No part of this publication may be reproduced without our prior permission.

The release valves with red buttons (for the parking brake) are equipped with **an integrated locking system** for when the vehicle is in motion, this has been the case since production week 12/02.

The variants with external locking pin are no longer offered (see table).

Designation	integrated locking of the red knob	unavailable	remarks
Dual release valve	963 001 050 0	963 001 061 0	without check valve, without plate
Dual release valve	963 001 051 0	963 001 062 0	with check valve, with plate
Dual release valve	963 001 052 0	963 001 063 0	without check valve, with plate
Dual release valve	963 001 053 0	963 001 064 0	with check valve, without plate
Single release valve	963 001 016 0	963 001 065 0	with flange, red knob
Single release valve	963 006 003 0	963 006 066 0	with thread M 16x1,5, red knob

Änderungen bleiben vorbehalten © Copyright: WABCO' 2002
Nachdruck - auch auszugsweise - nur mit unserer Genehmigung.