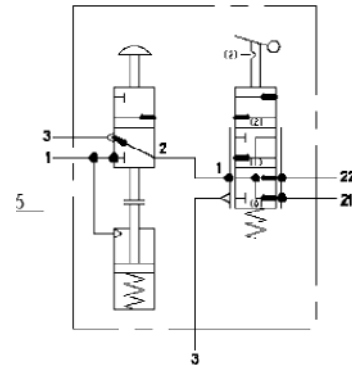
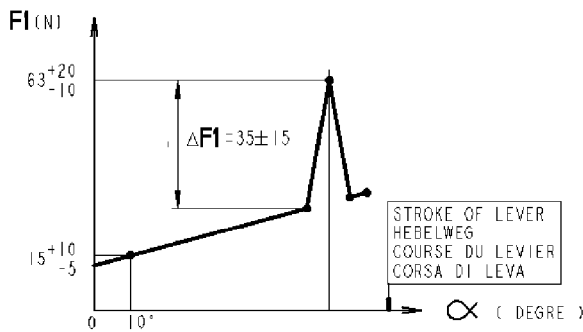


Test Instruction Hand Brake Valve 961 724 204 0

| |
|--|
| FORCE OUTPUT KRAFT EFFORT DE COMMANDE F2 = 80 N MAX (8.5 bar) SFORZO DI COMANDO |
| CHANGE-OVER AT PRESSURE DROP BELOW $4.0_{-0.6}^{0}$ bar <2> LINE "1" CLOSED LINE "2" EXHAUSTED UMSHALTUNG BEI ABFALL DES DRUCKES UNTER $4.0_{-0.6}^{0}$ bar LEITUNG "1" GESCHLOSSEN. LEITUNG "2" ENTLUEFTET CHANGEMENT A UNE CHUTE DE PRESSION AU DESSOUS DE $4.0_{-0.6}^{0}$ bar CONDUITE "1" FERMEE. CONDUITE "2" ECHAPPEMENT CAMBIAMENTO ALLA CADUTA DI PRESSIONE SOTTO DI $4.0_{-0.6}^{0}$ bar CONDOTTA "1" CHIUSA. CONDOTTA "2" SCARICO |
| IF THE RESERVOIR PRESSURE IS HIGHER THAN 4 bar OPERATING CONDITION MAY BE RESTORED BY PUSHING THE KNOB BETRIEBSBEREITSCHAFT KANN DURCH DRUECKEN DES KNOPFES WIEDERHERGESTELLT WERDEN WENN DER BEHAELTERDRUCK GROESSER ALS 4 bar IST SI LA PRESSION DANS LE RESERVOIR EST SUPERIEURE A 4 bar L'ETAT DE SERVICE PEUT ETRE RETABLI EN POUSSANT LE BOUTON SE LA PRESSION NEL SERBATOIO E SUPERIORE A 4 bar LA CONDIZIONE DI FUNZIONAMENTO PUO ESSERE RIPRISTINATA PULSANDO IL BOTTONE |



THE LOCKING DEVICE MUST AUTOMATICLY AND SAFETY LOCK THE HANDLE IN THE PARKING POSITION
<1> LA BUTEE DOIT VERROUILLER AUTOMATIQUEMENT ET DE FACON SECURISEE LA POIGNEE EN POSITION PARKING

DELIVERY PRESSURE
AUGESTFUERTER DRUCK
PRESSION D'UTILISATION
PRESSIONE D'UTILIZZAZIONE

$P1 = 8.5 \text{ bar}$

