

vehicle manufacturer: _____ type: _____

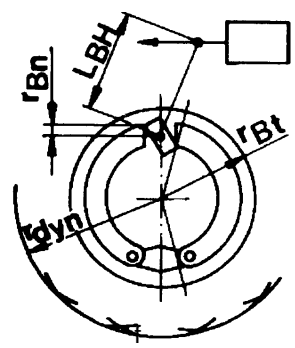
approval as per: EG / ECE other max. speed

	designations		laden	unladen
centre-axle trailer				
	maximum mass	P	kg	
	drawbar load	P _{St}	kg	
	axleload axle 1	P ₁	kg	
	axleload axle 2	P ₂	kg	
	axleload axle 3	P ₃	kg	

full trailer				
	maximum mass	P	kg	
	axleload axle 1	P ₁	kg	
	axleload axle 2	P ₂	kg	
	axleload axle 3	P ₃	kg	
	centre of gravity-height	h	mm	
	exist wheel base	E _R	mm	
	range of wheel base	E _R	mm	

semitrailer				
	maximum mass	min. P	kg	
		max. P	kg	
	axleload axle 1	P ₁	kg	
	axleload axle 2	P ₂	kg	
	axleload axle 3	P ₃	kg	
	centre of gravity-height	h	mm	
	exist wheel base	E _R	mm	
	range of wheel base	E _R	mm	

axle:		1	2	3
brake chamber: numb./type	KDz			
possible lever lengths	l _{BH} mm			
drum/disk radius	r _{Bt} mm			
C* or brakefactor				
mechanical efficiency	η %			
cam radius	r _{Bn} mm			
dynamic tyre radius	min. r _{dyn} mm			
or exist	r _{dyn} mm			
tyre type	max.			
threshold torque	M _{AL} Nm			



axle manufact.: _____ type: _____ test report number: _____

brake size: _____ With "standard axles", only the manufacturer and the test report number necessary !

WABCO-brake diagram-no.: _____ Axle bogie see page 2 !

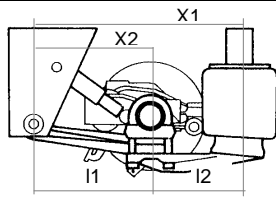
self steering axle: spring brake: ABS VCS: EBS :

axle bogie

manufacturer:

type:

air suspension



distance I1 / I2 [mm]:

/

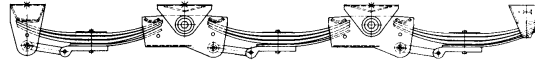
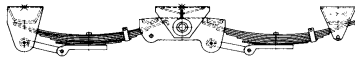
or distance X1 / X2 [mm]:

/

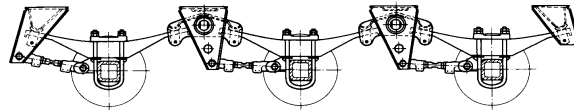
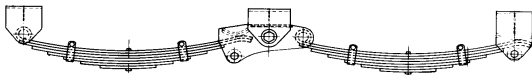
bag diameter [mm]:

drawing-no.:

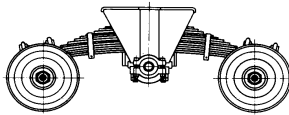
leaf spring bogie (with dyn. compensation)



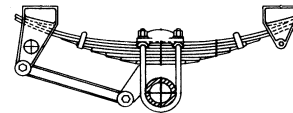
leaf spring bogie (without dyn. compensation)



balance beam bogie



individual axles mechanical



In case of another axle suspension, please add bogie drawing !

bag pressure [bar]:

laden

/ unladen

spring deflection [mm]:

front axle:

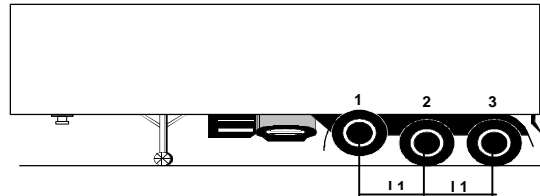
front axle:

rear axle(s):

rear axle(s):

semitrailer with lift axle/s

In combination with EBS, data not required !



axle

1

2

3

which axle/s shall be lifted [x]:

wheel base I1 [mm]:

bag pressure laden [bar]:

bag pressure unladen (with axle/s lifted) [bar]:

bag pressure unladen (all axle/s on bottom) [bar]:

axle load unladen (with axle/s lifted) [kg]:

axle load unladen (all axle/s on bottom) [kg]:

remarks:

company:

street:

name:

city:

telephone:

telefax:

e-mail: