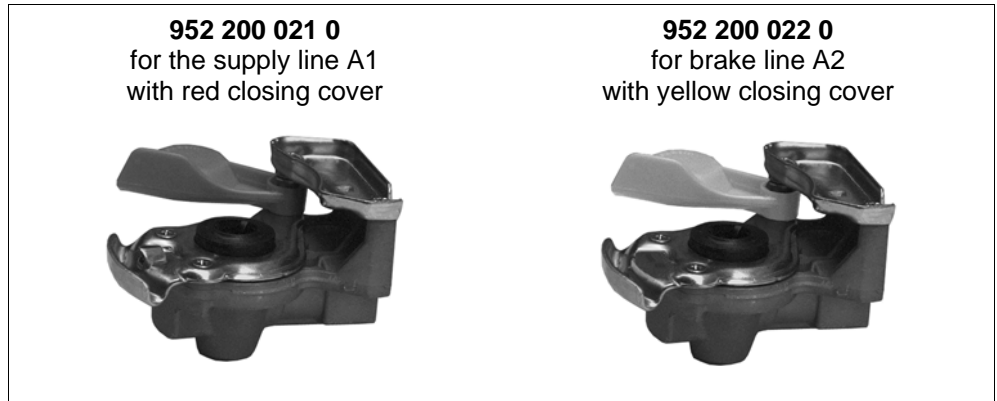


Hose coupling 952 20. / 452 ...



Application

In the supply- and brake-line between the towing vehicle and the trailer.

Purpose

Connect the two lines with cross-coupling safeguard.
The hose couplings conform to the ISO 1728 standard.

Maintenance

Special maintenance that extends beyond the legally specified inspections is not required.

! If automatic hose couplings are used, the shut-off cock normally required is not required.
Whenever the trailer parts from its towing vehicle, the lines will always rupture. The hose couplings do not become disconnected.

! After unhitching the vehicle, the plastic cover (red or yellow) must be screwed onto the coupling head opening to prevent dirt from entering.

Test

For leakages only.

Technical data

Order number	952 200 021 0	952 200 022 0
Design	For the supply line A1 with red closing cover and an axial safeguard against cross-coupling	For brake line A2 with yellow closing cover and a lateral safeguard against cross-coupling
Method of utilisation	Semitrailer	Truck Semitrailer tractor
Max. operating pressure	10 bar	
Operating temperature range	-40 °C to +80 °C	
Weight	0.22 kg	0.18 kg

Dummy Coupling: Order number 452 402 000 0

Hose coupling 952 20. / 452 ...

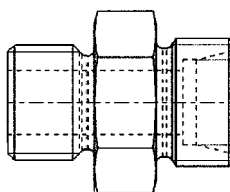
Overview

! Hose couplings of the older 452 200 series can be connected to hose couplings of the 952 200 series without any problem.

		Coupling heads		
Towing vehicle	Trailer	Thread	Colour	Comment
For Swiss type brake systems				
452 303 031 0	452 203 031 0	M 22x1.5	red	Supply line
452 303 032 0	452 203 032 0	M 22x1.5	yellow	Control line
Dual-line braking system				
	452 200 000 0	M 22x1.5	–	without closing cover
	452 200 004 0	M 22x1.5	Black	Black closing cover
452 200 211 0	452 200 011 0	M 22x1.5	red	Supply
952 200 221 0	952 200 021 0	M 16x1.5		
452 200 212 0	452 200 012 0	M 22x1.5	yellow	Control line
952 200 222 0	952 200 022 0	M 16x1.5		
	952 200 040 0	M 16x1.5 with test connection	yellow	Control line
952 200 210 0		2x M 16x1.5	red	Supply
Duo-Matic				
452 802 009 0	452 804 012 0	M 22x1.5 / M 16x1.5		Towing vehicle / Trailer
452 805 004 0	452 803 005 0	M 22x1.5 / M 16x1.5		Truck tractor / Low-bed
452 802 007 0	452 803 004 0	M 22x1.5 / M 16x1.5		Truck tractor / Low-bed (with quick-connect)

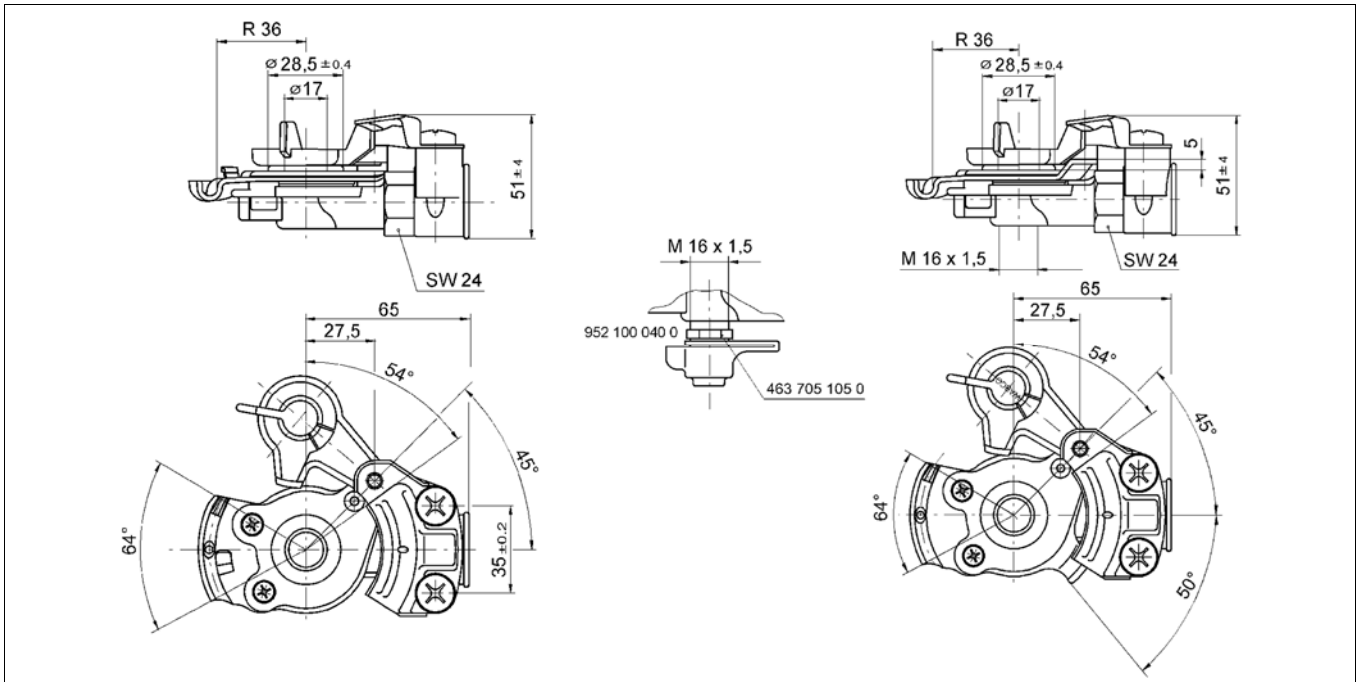
Using doubled pipe 893 100 138 4, the coupling head with an M 22x1.5 thread can be replaced with a head with an M 16x1.5 thread.

893 100 138 4



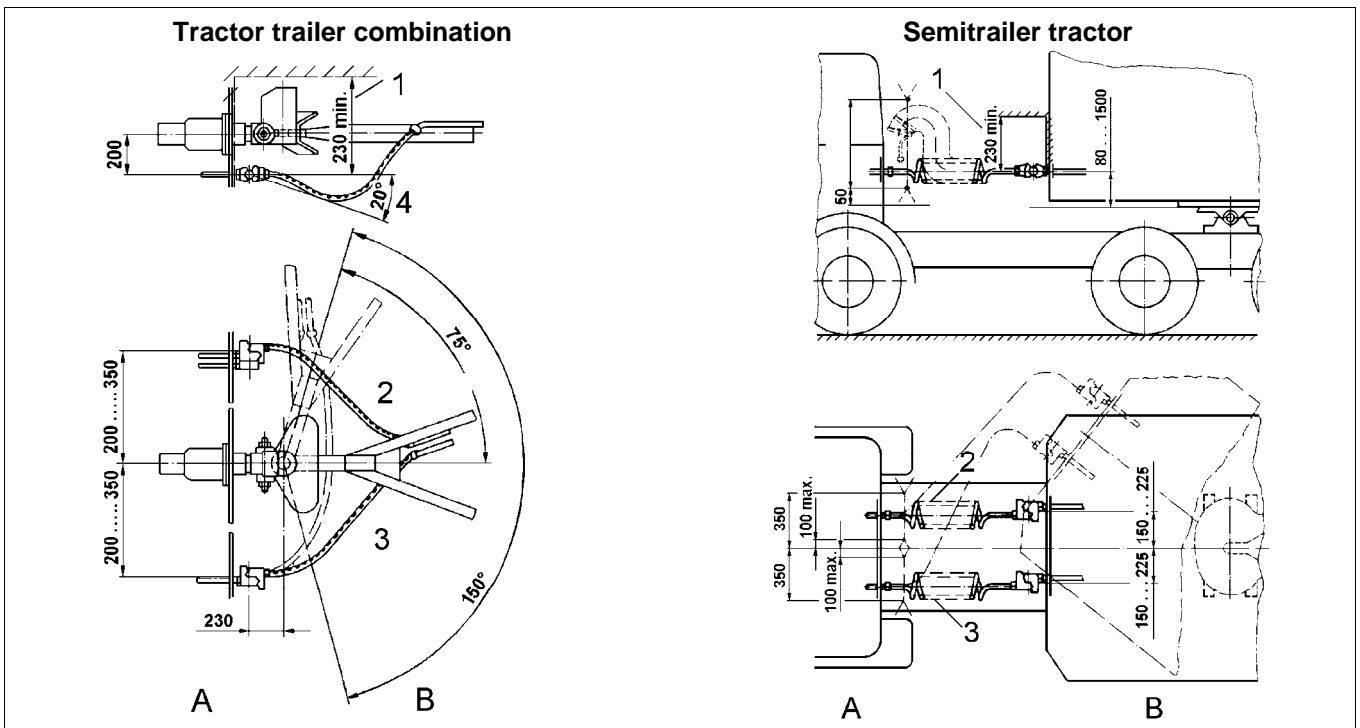
Hose coupling 952 20. / 452 ...

Installation dimensions



Installation recommendation

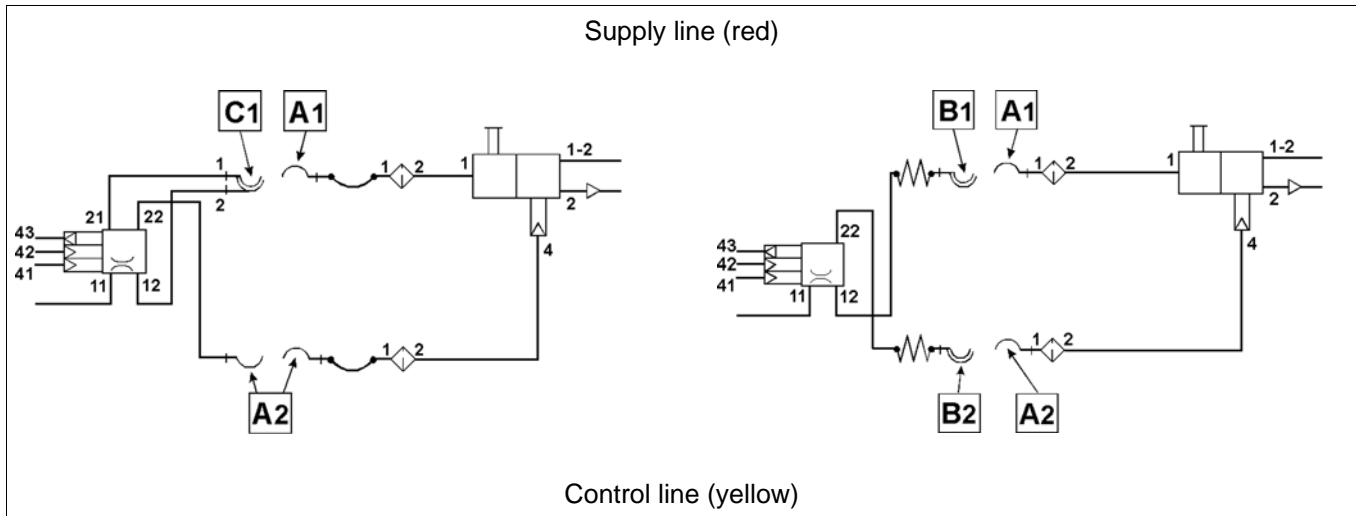
The hose couplings must be installed according to ISO 1728, see the following drawings.



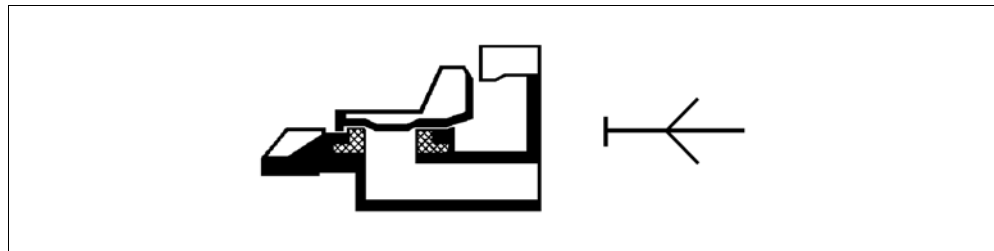
Legend

- | | | | | | | | |
|---|-------------------------|---|-------------|---|--------------|---|--------------------------------|
| 1 | Free space for coupling | 2 | Supply line | 3 | Control line | 4 | Max. deviation from horizontal |
|---|-------------------------|---|-------------|---|--------------|---|--------------------------------|

Schematic for installation



Operation



When the trailer is connected to the tractor, the hose coupling with its connected coupling head is fitted to the coupling head attached on the tractor with a twist at the same time as interlocking the opposing guides. The two lock and establish a safe union after stopping at the end of the rotation. This causes the packing rings to be compressed, achieving the necessary seal. The features to prevent mismatching ensure that only the matching hose couplings can be connected.

Hose coupling with integrated line filters 952 201

Application

In the supply- and brake-line between the towing vehicle and the trailer.

Purpose

When making the coupling, the hose couplings on the towing vehicle and the trailer are connected with one another. This occurs by twisting and interlocking the opposing guides at the same time.

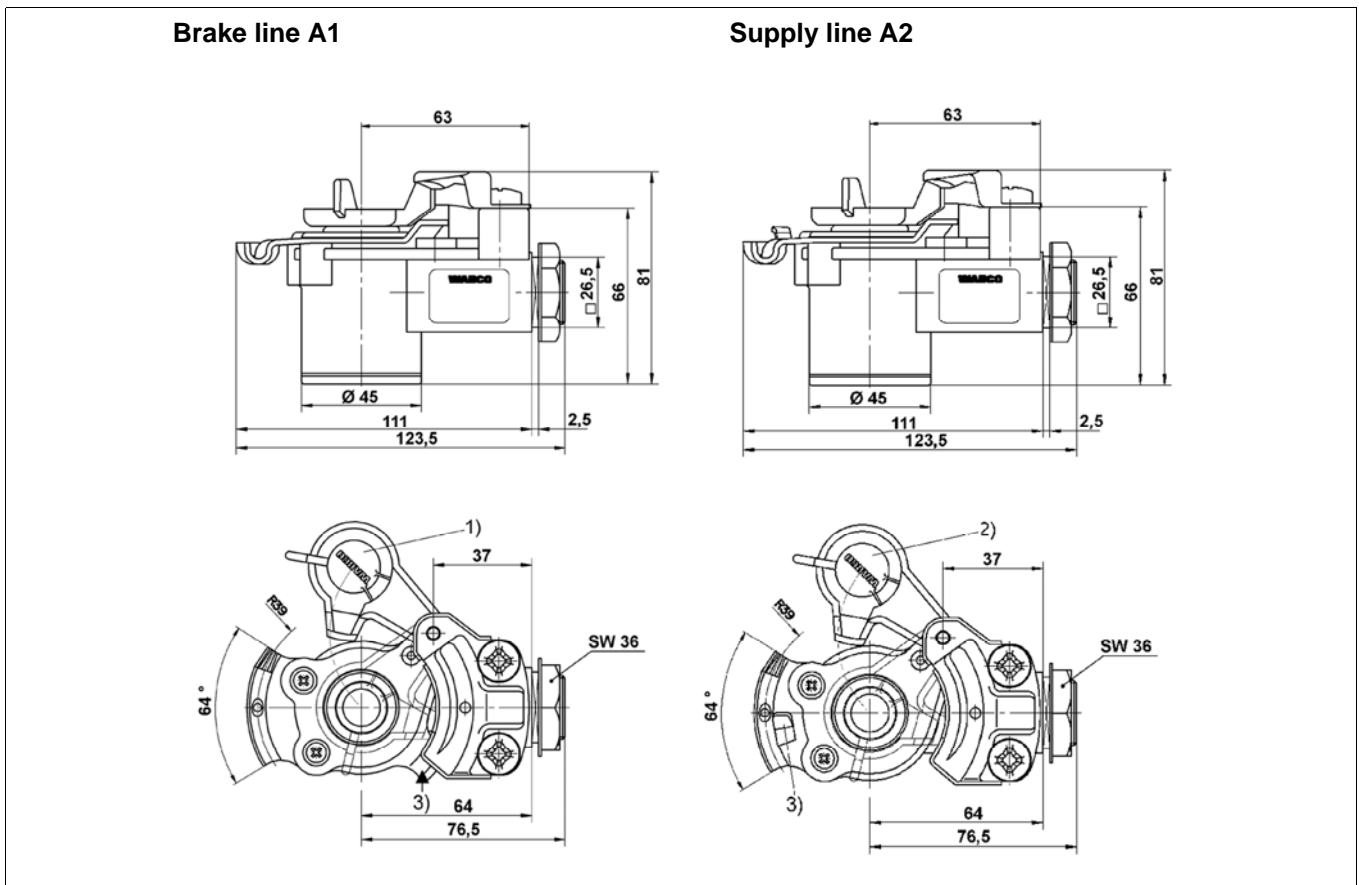
An additional line filter is not required.



Combining important functions in a single product.

Advantages: less accessories, lower space requirements, less parts, quick and easy installation.

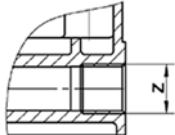
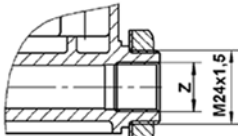
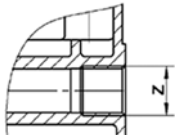
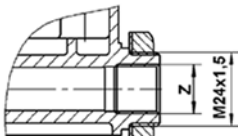
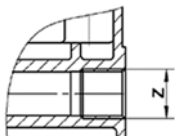
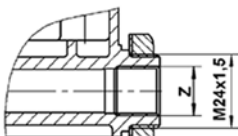
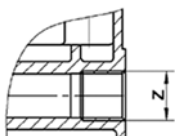
Installation dimensions



Port threads	Legend	
Z = M 16x1.5	1)	Yellow cap
	2)	Red cap
	3)	Anti-mismatch device

Hose coupling 952 20. / 452 ...

Technical data

Order number	Design		Variant	Max. operating pressure	Operating temperature range
	Supply line (Red cap)	Control line (Yellow cap)			
952 201 001 0		X		8.5 bar	-40 °C to +80 °C
952 201 003 0		X			
952 201 002 0	X				
952 201 004 0	X				
952 201 007 0		X			
952 201 008 0		X			
952 201 011 0		X			
952 201 012 0	X				
952 201 013 0		X			
952 201 014 0		X	Only outer thread		
952 201 015 0	X		No thread		
952 201 016 0	X				
952 201 017 0		X			