

TASC – Return-to-Ride valve 463 090



Application

For air-suspension commercial vehicles with Trailer ABS or Trailer EBS.

Purpose

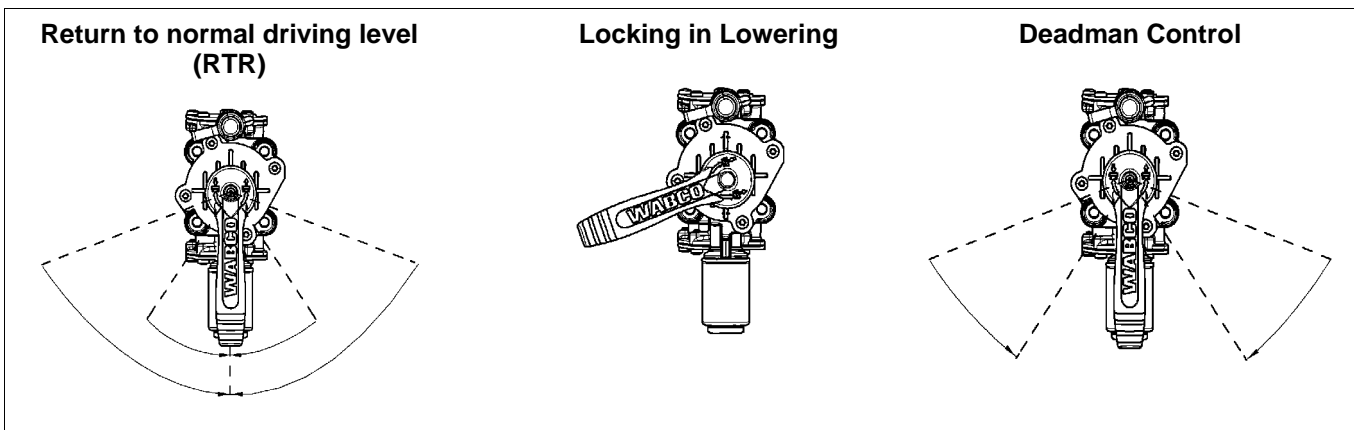
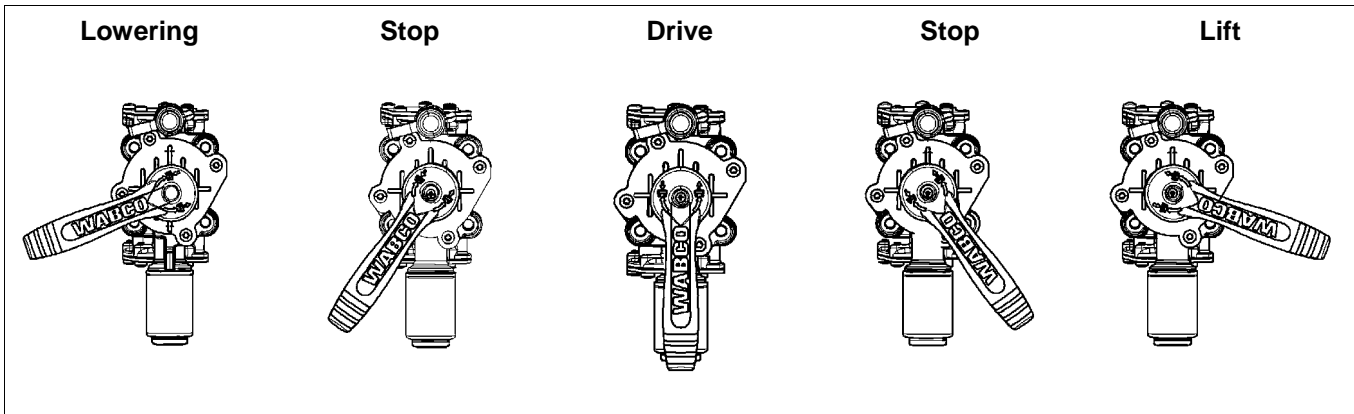
TASC can be used to raise and lower the vehicle – in the same way as with a rotary slide valve. The chassis is also automatically returned to normal driving level as soon as the vehicle starts driving (RTR – Return-To-Ride).

The raising/lowering process is started by simply turning the handle right or left. To halt this process the handle is moved back into the stop position. The system keeps the chassis at the set level.

TASC can be operated in combination with or without levelling valve with height limitation. TASC can be connected directly if levelling valves with height limitation are used. This avoids the bellows being permanently connected to the air reservoir at the upper stop position.

TASC – Return-to-Ride valve 463 090

Handle positions



Maintenance

Special maintenance that extends beyond the legally specified inspections is not required.

Technical data

Part number	463 090 020 0 Dual circuit	463 090 021 0 Dual circuit	463 090 023 0 Dual circuit	463 090 123 0* Dual circuit	463 090 012 0 Single circuit
RTR function	x	x	x	x	x
Lower and lock position	x	x	x	–	x
Pneumatic connection	8x1	8x1	M 16x1.5	M 16x1.5	M 16x1.5
Pressure test connection	x	–	–	–	x
Working pressure	3,5 ... 10 bar				
Voltage	18 ... 32 V				
Thermal range of application	-40 ... 65 °C				
Electrical connection	DIN 72585-B1-3.1-Sn/K2 - bayonet				

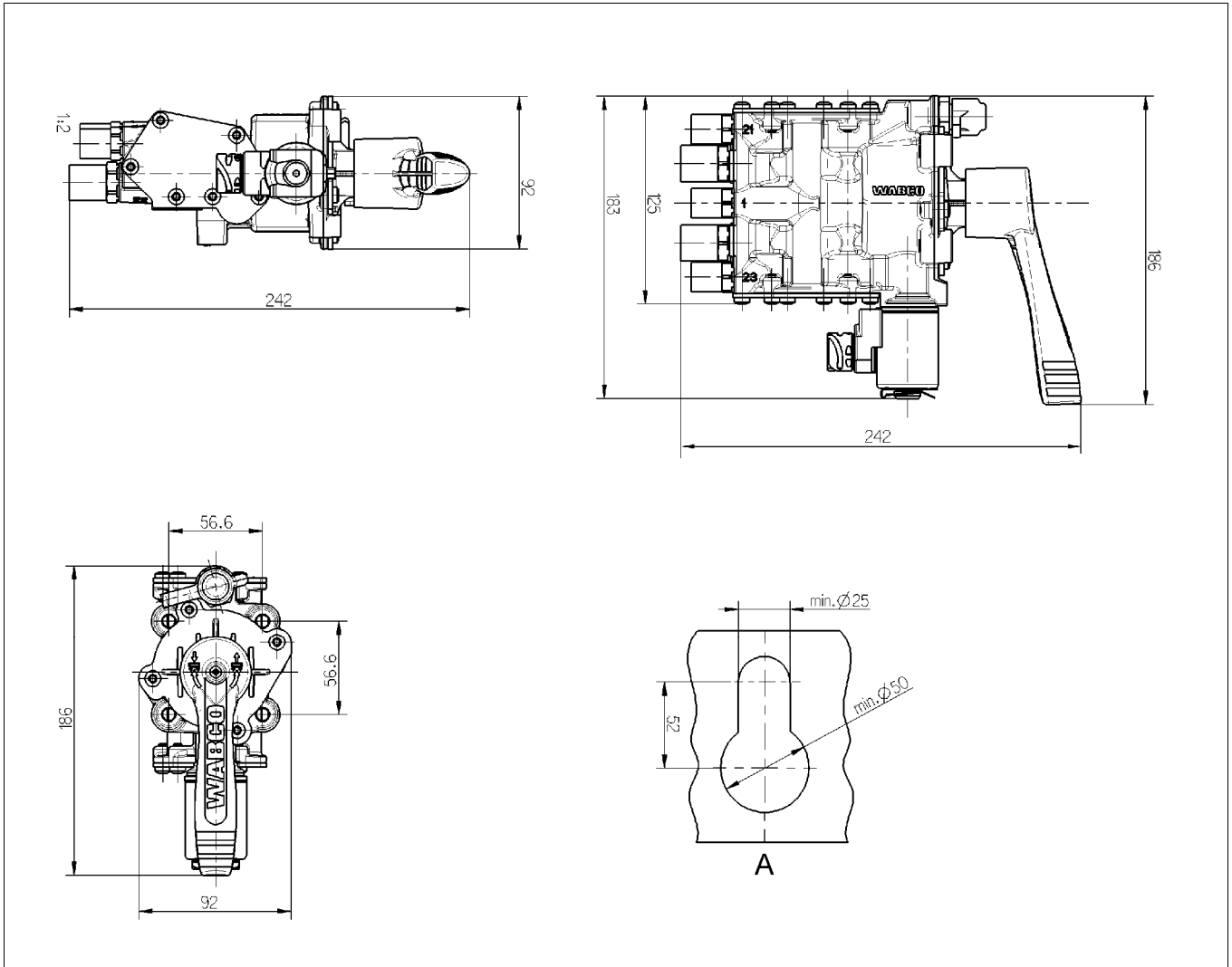
Key

* Deadman control for vehicles with a stroke exceeding 300 mm

TASC – Return-to-Ride valve 463 090

Installation

TASC can be fitted to the operating panel (A) on the trailer.



Depending on the clearance, the unit can be rotated through 90° on installation. The TASC handle can then be turned accordingly so it is easy for the user to operate.

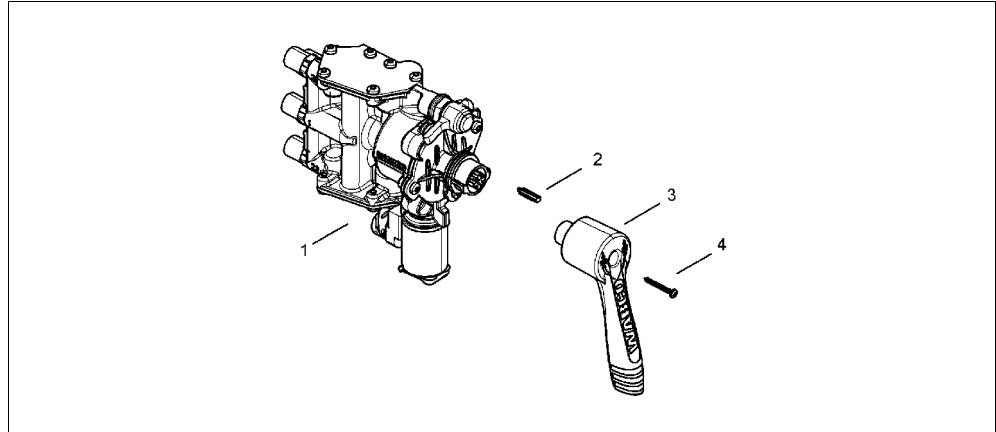
! Electrical connection

TASC with Return-to-Ride is controlled by a speed pulse from the ABS-/EBS system. Retrofitting TASC (when replacing a rotary slide valve or similar product) may require a diagnostic tool as well as training for the new system. One of the cables listed below is required for WABCO systems.

Cable	System	Length
449 623 XXX 0	VCS II	6 m/6 m; 10 m/10 m
449 435 030 0	EBS D	3 m
449 443 XXX 0	EBS E	0,8 m; 1 m; 2 m; 4 m; 6 m; 10 m

TASC – Return-to-Ride valve 463 090

Adjustment of handle to housing



Key

1	TASC	2	Pin	3	Handle	4	Bolt
---	------	---	-----	---	--------	---	------

