

## Duo-Matic quick-coupling 452 80.



### Application

Connection of towing vehicle and trailer instead of using hose couplers

### Purpose

Connect the air braking system of the motor vehicle with the brake system of the trailer.

With Duo-Matic quick couplings, the trailer vehicles can be coupled quicker and more securely than with standard hose couplers.

### Maintenance

Special maintenance that extends beyond the legally specified inspections is not required.

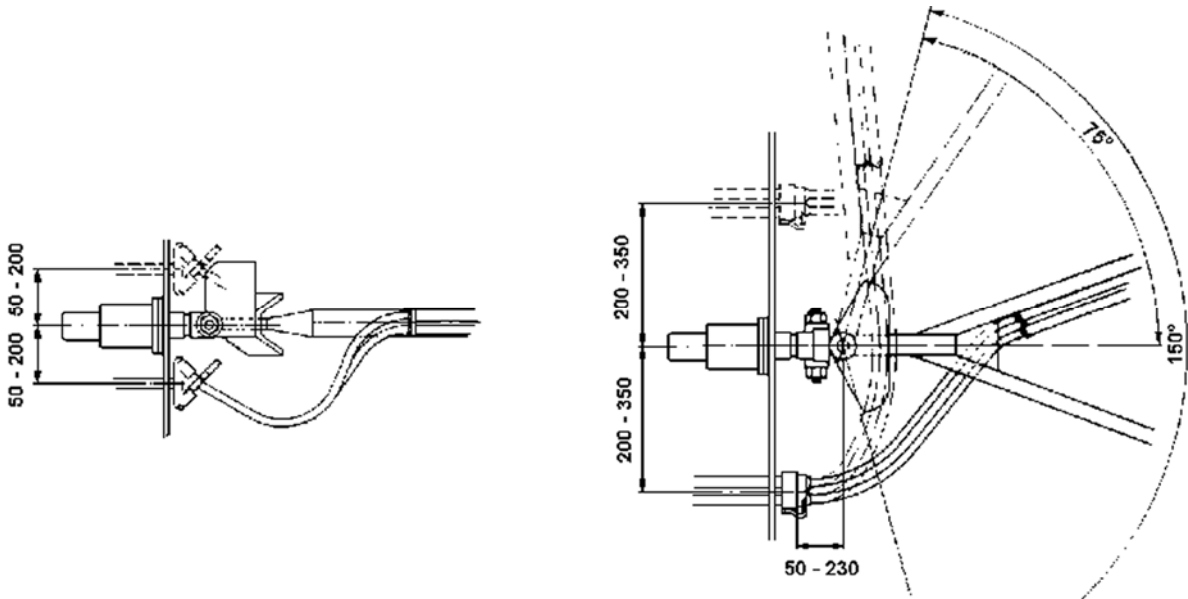
### Installation recommendation

- Install the Duo-Matic quick-coupling according to ISO 1728 (see following installation diagram).

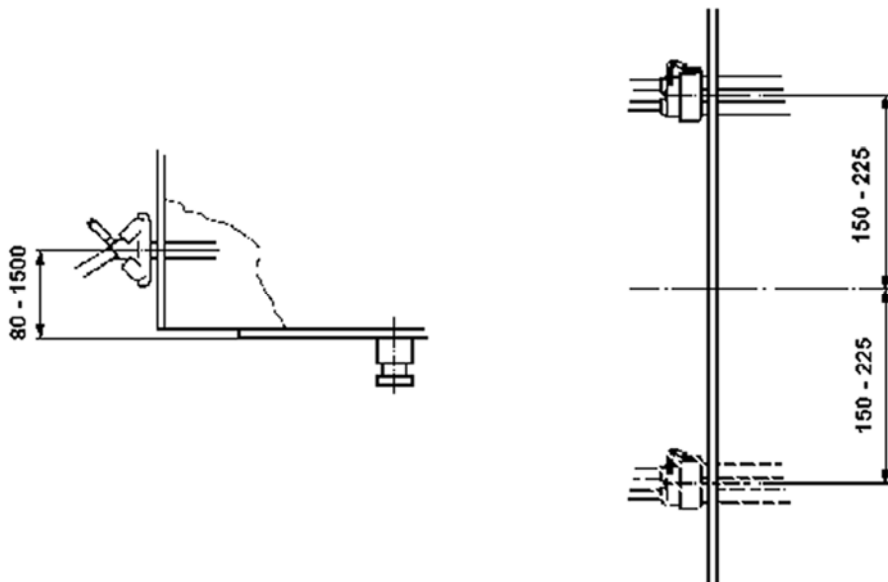
# Duo-Matic quick-coupling 452 80.

## Installation diagram

### For drawbar trailers

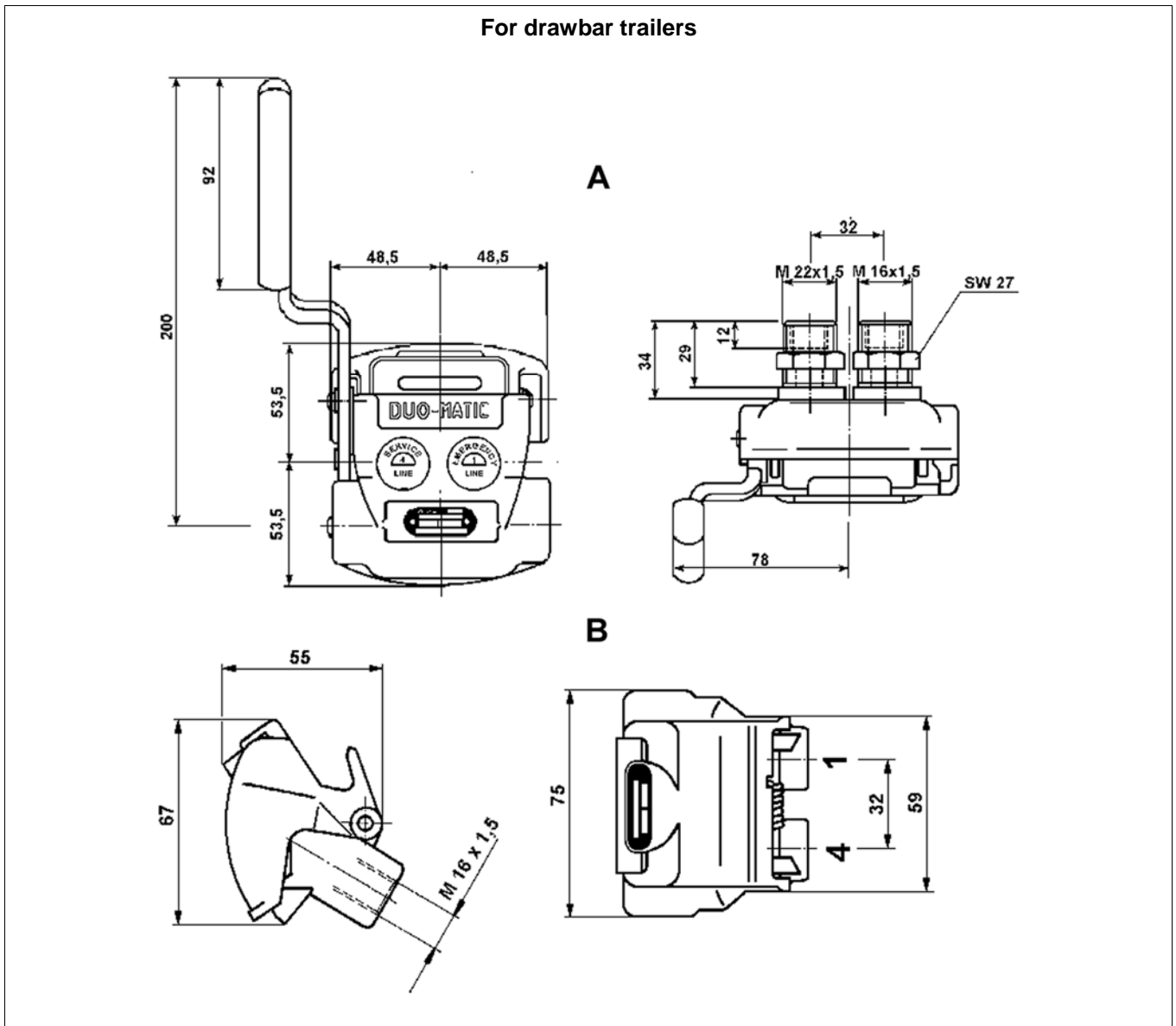


### For semitrailers



# Duo-Matic quick-coupling 452 80.

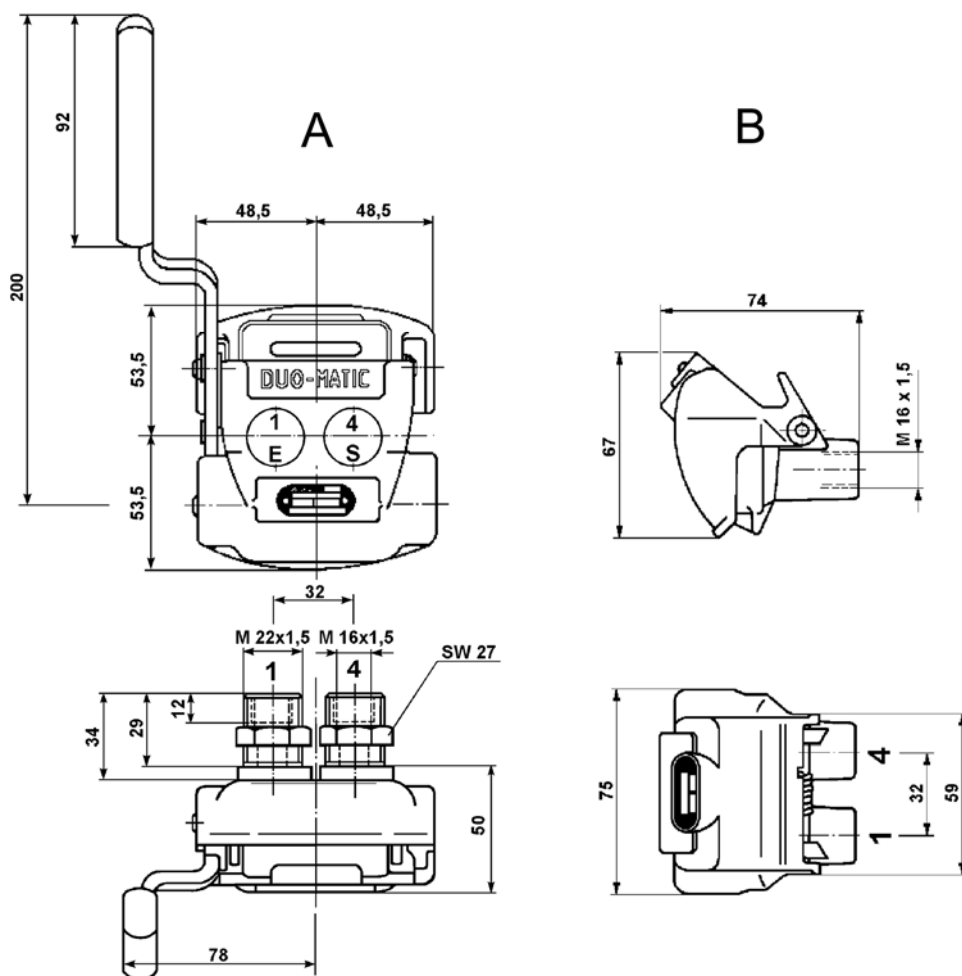
## Installation dimensions



Connections		Legend	
1	Energy supply	4	Control port
A	Vehicle part	B	Drawbar trailer part

# Duo-Matic quick-coupling 452 80.

For semitrailers



## Connections

1 Energy supply

4 Control port

## Legend

A Vehicle part

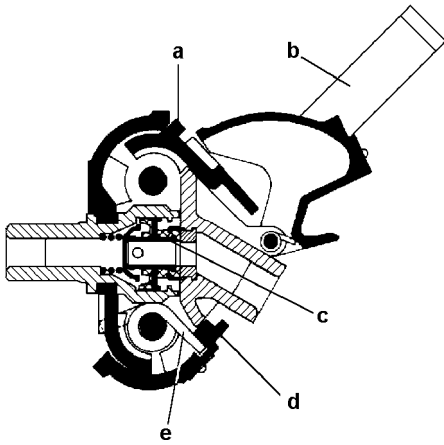
B Semitrailer part

## Technical data

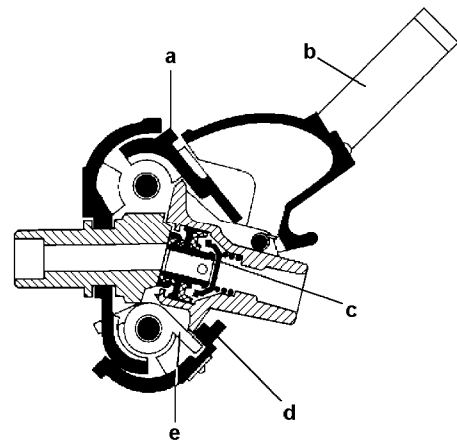
Order number	For drawbar trailers		For semitrailers			
	452 802 009 0 Vehicle part	452 804 012 0 Drawbar trailer part	452 803 0050 Semitrailer part	452 805 004 0 Vehicle part	452 802 007 0 Semitrailer part	452 803 004 0 Vehicle part
Quick connector	No		No		Yes	
Max. operating pressure	10 bar		10 bar			
Nominal diameter	9 mm		9 mm			
Permissible medium	Air		Air			
Operating temperature range	-40 °C to +80 °C		-40 °C to +80 °C			
Weight	1.0 kg	0.2 kg	1.0 kg	0.3 kg	1.08 kg	1.17 kg

## Duo-Matic quick-coupling 452 80.

### Operation



During the connection of the drawbar trailer the handle (b) is pushed down in which case the protective covers (a and d) will open. The Duo-Matic-Trailer part has to be laid underneath the protective covers and the handle (b) is released. The torsion spring (e) acts on the protective covers (a and d) and pulls the trailer parts against the automatically closing valves (c), in which case those will open and the compressed air flows into the drawbar trailer.



During the connection of the trailer the handle (b) is pushed down in which case the protective covers (a and d) will open. The Duo-Matic-Trailer part has to be laid underneath the protective covers and the handle (b) is released. The torsion spring (e) acts on the protective covers (a and d) and pushes the vehicle parts against the surface. The automatic shut-off valves (c) open and the compressed air flows into the trailer.