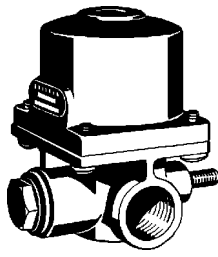


Anpassungsventil

Adaptor Valve

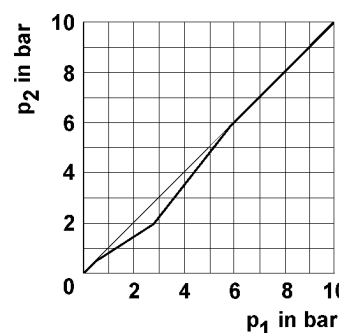
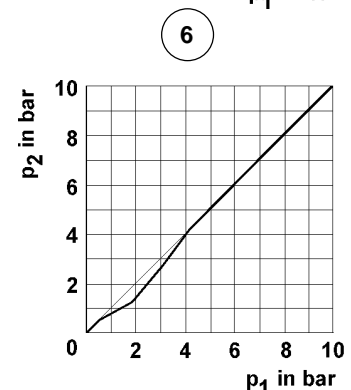
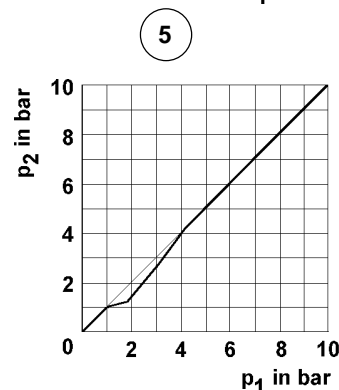
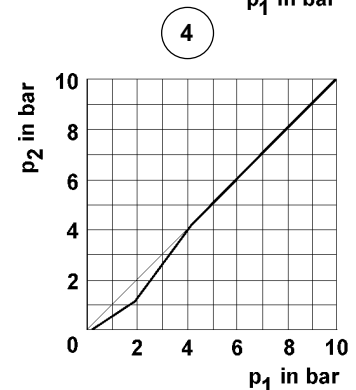
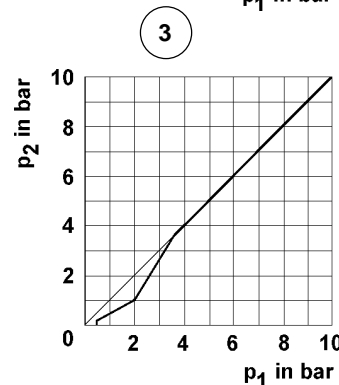
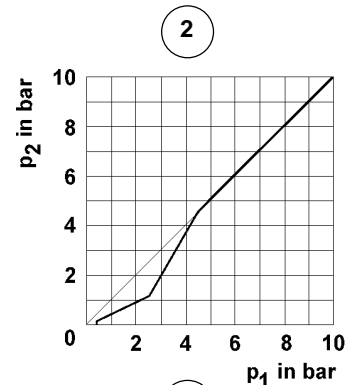
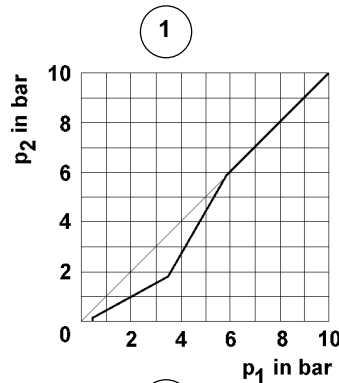
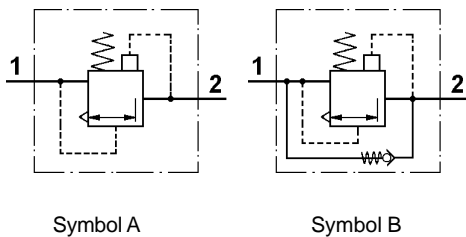
975 002



Technische Daten / Technical Data:

Betriebsdruck Operating pressure	max. 10 bar
Zulässiges Medium Permissible medium	Luft air
Thermischer Anwendungsbereich Operating temperature range	-40°C bis / to + 80°C
Gewicht Weight	0,6 kg

Charakteristik / Characteristic:



Zweck:

Reduzierung der Bremskraft der anzupassenden Motorwagen-Vorderachse bei Teilbremsungen sowie schnelle Entlüftung der Bremszylinder.

Einbauempfehlung:

Das Druckverhältnisventil ist möglichst in der Mitte zwischen den beiden Bremszylindern der anzupassenden Achse anzuordnen. Der Einbau ist senkrecht mit der Entlüftung 3 nach untenweisend vorzunehmen.

Die Befestigung erfolgt mit dem seitlich angebrachten Gewindestift und einer Mutter M8.

Purpose:

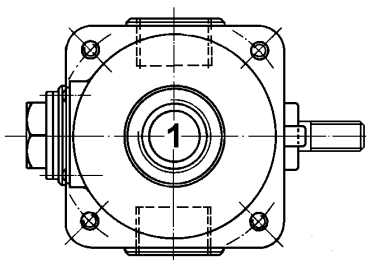
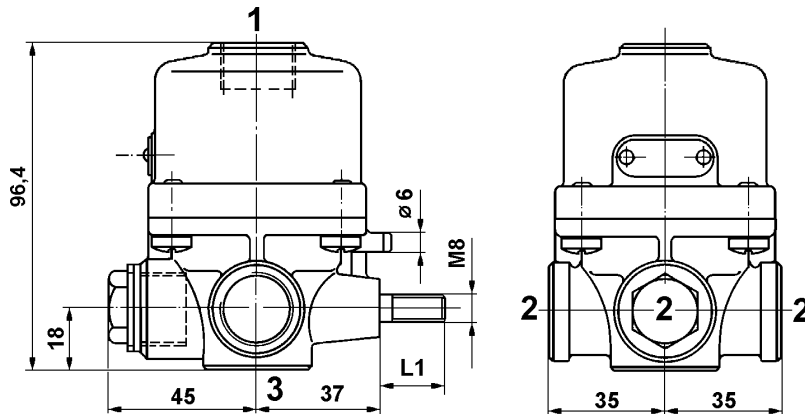
To reduce the brake force of the axle to be adapted during partial brake applications and rapid exhausting of brake actuators.

Installation Requirements:

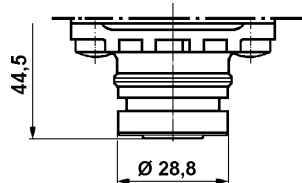
It is advisable to mount the adapter valve between the two brake actuators of the axle to be adapted. The valve must be mounted vertically with exhaust 3 pointing downwards. It is fastened by means of the set screw on the side, and a nut M8.

Einbaumaße / Installation:

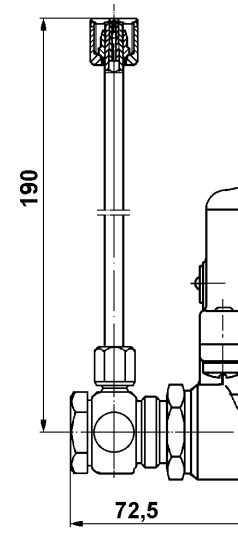
Type 1



Type 2



Type 3



Bestellnummer Part Number	Type	Symbol	Charakteristik Characteristic	Anschlußgewinde / Port thread size			L1 in mm	Bemerkungen Comments
				1	2	3		
975 002 001 0	1	A	1	M 22x1,5	M 22x1,5 *)	–	20	
975 002 002 0	1	A	1	M 22x1,5	M 22x1,5	–	20	
975 002 003 0	1	A	2	M 22x1,5	M 22x1,5 *)	–	20	
975 002 005 0	1	A	3	M 22x1,5	M 22x1,5 *)	–	20	
975 002 017 0	1	A	4	M 16x1,5	M 16x1,5	–	25	
975 002 037 0	1	A	4	M 16x1,5	M 16x1,5 *)	M 22x1,5	25	
975 002 067 0	3	B	5	M 16x1,5	M 16x1,5	–	25	
975 002 068 0	2	B	6	M 22x1,5 Voss	M 22x1,5 Voss	Schnapp	–	M8 innen / internal
975 002 069 0	1	A	7	M 22x1,5	M 22x1,5	–	25	

*) ein Anschluß 2 verschlossen / one port 2 plugged