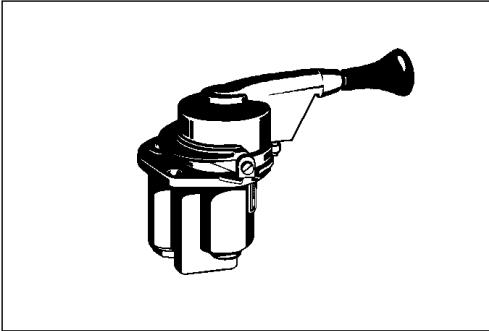


Handbremsventil

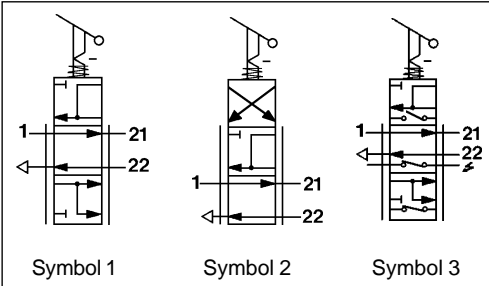
Hand Brake Valve

961 703



Technische Daten / Technical Data:

Betriebsdruck Operating pressure	max. 8 bar	
Zulässiges Medium Permissible medium	Luft / air	
Therm. Anwendungsbereich Operating temperature range	siehe Tabelle see table	
Nennweite Nominal diameter	Anschluß 21 Port 21	Ø 8 mm
	Anschluß 22 Port 22	Ø 5 mm



Einbaumaße / Installation:

Zweck:

Feinfühlig abstufbare Betätigung der Hilfsbremse sowie Betätigung der Feststellbremse in Verbindung mit Federspeicherzylindern.

Einbauempfehlung:

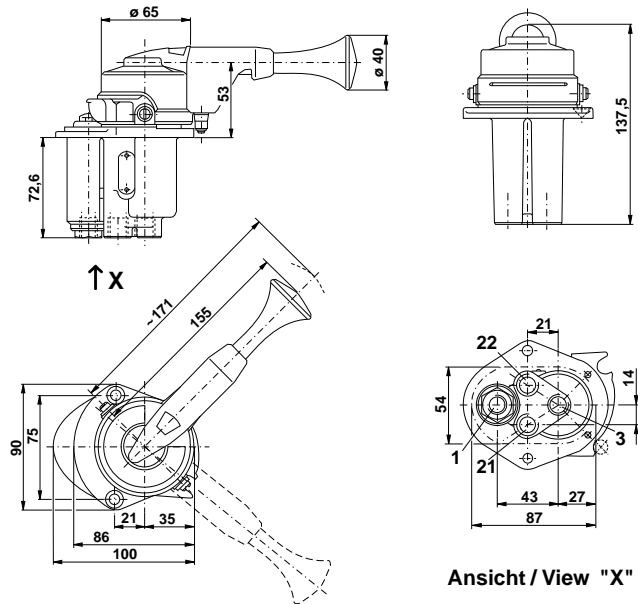
Das Handbremsventil ist mit 2 Senkschrauben M6 im Armaturen Brett zu befestigen.

Purpose:

Sensitive graduated operation of the auxiliary brake and operation of the parking brake in conjunction with spring brake actuator.

Installation Requirement:

The hand brake valve should be mounted on a panel with two M6 countersunk screws.



Anschlüsse / Ports:

- | | | |
|------|----------|---|
| 1 = | M 14x1,5 | Energiezufuß / Energy supply |
| 21 = | M 14x1,5 | Federspeicher / Spring brake actuator |
| 22 = | M 14x1,5 | Anhänger-Steuerventil / Trailer control valve |
| 3 = | M 14x1,5 | Entlüftung / Exhaust |

Handbremsventil

Hand Brake Valve

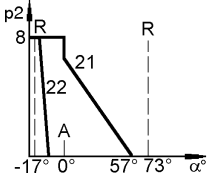
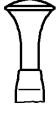
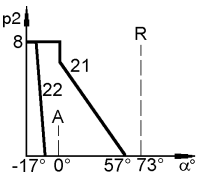

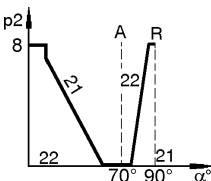

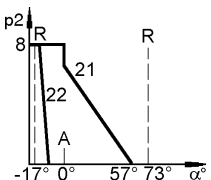

961 703

Erläuterungen / Explanations:

Betätigungsbereich / Operating range:

A= Anschlag / Stop

R= Raststellung / Locked position

Bestellnummer Part Number	Charakteristik und Drehrichtung Characteristic and direction of rotation	Griffform Handle Symbol	Thermischer Anwendungsbereich Operating temperature range	Bemerkungen Comments
961 703 001 0	 <p>rechtsdrehend / clockwise</p>	 <p>Symbol 1</p>	-40°C bis/to +80°C	
961 703 002 0	 <p>rechtsdrehend / clockwise</p>	 <p>Symbol 1</p>	-40°C bis/to +80°C	
961 703 200 0	 <p>rechtsdrehend / clockwise</p>	 <p>Symbol 2</p>	-40°C bis/to +80°C	
961 701 500 0	 <p>rechtsdrehend / clockwise</p>	 <p>Symbol 3</p>	-40°C bis/to +80°C	mit Elektroschalter with electrical switch