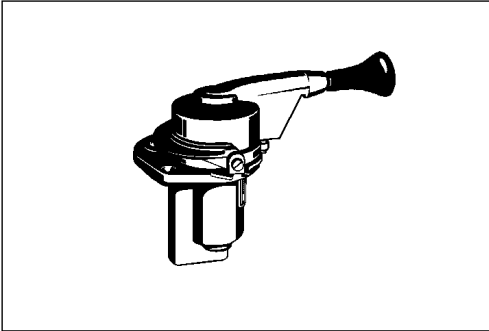


Handbremsventil

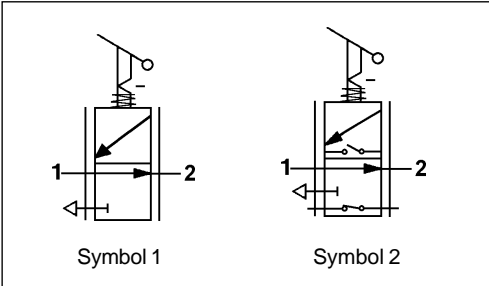
Hand Brake Valve

961 701

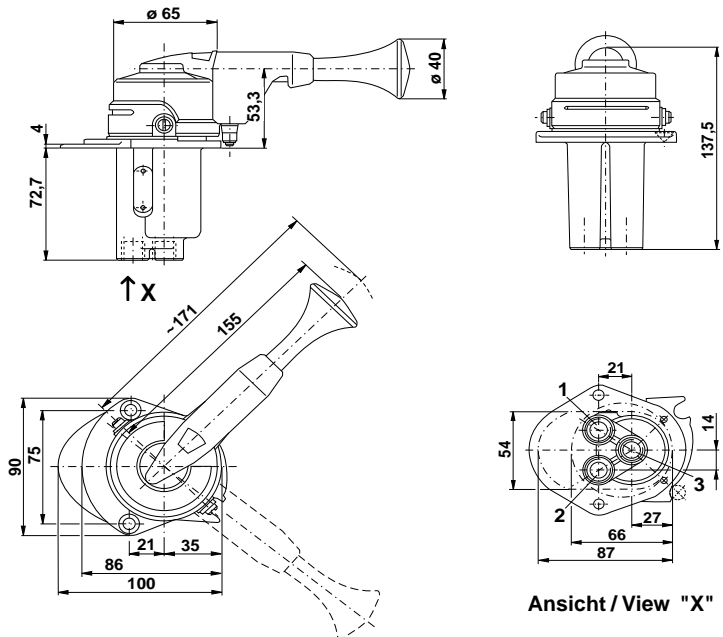


Technische Daten / Technical Data:

Betriebsdruck Operating pressure	max. 8 bar
Zulässiges Medium Permissible medium	Luft / air
Therm. Anwendungsbereich Operating temperature range	siehe Tabelle see table
Nennweite Anschluß 2 Nominal diameter Port 2	Ø 8 mm



Einbaumaße / Installation:



Zweck:

Feinfühlig abstufbare Betätigung der Hilfsbremse sowie Betätigung der Feststellbremse in Verbindung mit Federspeicherzylindern.

Einbauempfehlung:

Das Handbremsventil ist mit 2 Senkschrauben M6 im Armaturenbrett zu befestigen.

Purpose:

Sensitive graduated operation of the auxiliary brake and operation of the parking brake in conjunction with spring brake actuator.

Installation Requirement:

The hand brake valve should be mounted on a panel with two M6 countersunk screws.

Anschlüsse / Ports:

- 1 = M 14x1,5 Energiezufuß / Energy supply
- 2 = M 14x1,5 Federspeicher / Spring brake actuator
- 3 = M 14x1,5 Entlüftung / Exhaust

Handbremsventil

Hand Brake Valve

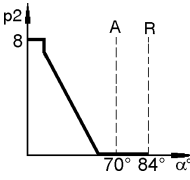

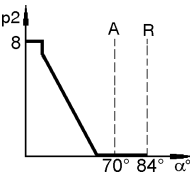
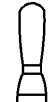
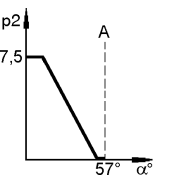

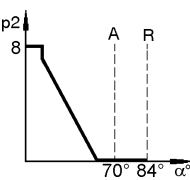

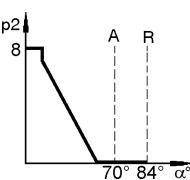

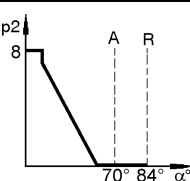

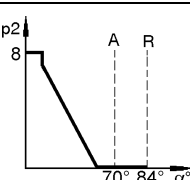

961 701

Erläuterungen / Explanations:

Betätigungsbereich / Operating range:

A= Anschlag / Stop

R= Raststellung / Locked position

Bestellnummer Part Number	Charakteristik und Drehrichtung Characteristic and direction of rotation	Griffform Handle	Thermischer Anwendungsbereich Operating temperature range	Bemerkungen Comments
		Symbol		
961 701 100 0	 <p>rechtsdrehend / clockwise</p>		-40°C bis/to +80°C	
		Symbol 1		
961 701 105 0	 <p>rechtsdrehend / clockwise</p>		-10°C bis/to +120°C	
		Symbol 1		
961 701 106 0	 <p>rechtsdrehend / clockwise</p>		-40°C bis/to +80°C	
		Symbol 1		
961 701 110 0	 <p>linksdrehend / anti-clockwise</p>		-40°C bis/to +80°C	
		Symbol 1		
961 701 115 0	 <p>linksdrehend / anti-clockwise</p>		-10°C bis/to +120°C	
		Symbol 1		
961 701 117 0	 <p>linksdrehend / anti-clockwise</p>		-40°C bis/to +80°C	wie 961 701 110 0, jedoch mit verstärkter Führung like 961 701 110 0, but with reinforced guide
		Symbol 1		
961 701 500 0	 <p>rechtsdrehend / clockwise</p>		-40°C bis/to +80°C	mit Elektroschalter with electrical switch
		Symbol 2		