

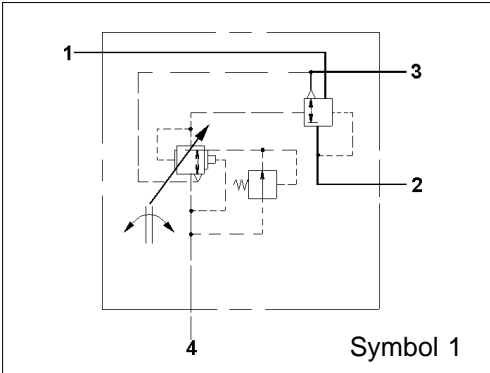
Purpose:

To automatically control braking effort on an axle in response to the suspension deflection caused by the vehicle load, and to ensure rapid supply and exhaust for the brake actuators by means of the integral relay.

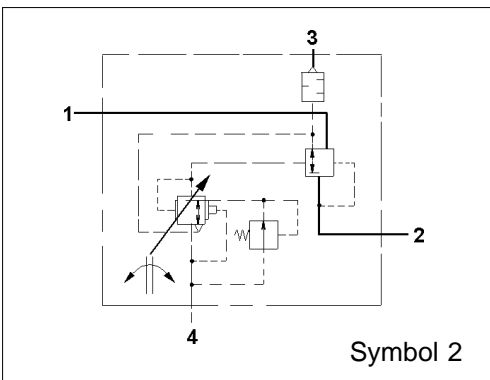
Installation Requirement:

The valve must be installed vertically with the exhaust port (3) pointing downwards. At least 2 of 4 M 8 mounting bolts should be used to attach the valve to the chassis. Flexible arm 433 306 002 0 must be used to provide a pivotable connection.

The nomographs 475 710 902 3 for determining the setting data are available from Department S-I, Tel. (511) 922 1688



Technische Daten / Technical Data:	
Betriebsdruck Operating Pressure	max. 10 bar
Zulässiges Medium Permissible Medium	Luft / air
Therm. Anwendungsbereich Operating temperature range	-40°C bis/to +80°C



Zweck:

Automatische Regelung der Bremskraft in Abhängigkeit von der Federdurchbiegung und damit vom Beladungszustand des Fahrzeuges. Durch das integrierte Relaisventil erfolgt eine schnelle Be- und Entlüftung der Bremszylinder.

Einbauempfehlung:

Der automatische Bremskraftregler (ALB) ist senkrecht einzubauen, daß die Entlüftung (3) nach unten zeigt. Zur Befestigung dienen 2 der 4 Gewindestifte M8 auf der Gehäuseoberseite. Für die Anlenkung ist bei Bedarf der Federungskörper 433 306 002 0 zu verwenden.

Die Nomogramme 475 710 902 3 zur Ermittlung der Einstelldaten können in der Abteilung S-I, Tel. (0511) 9221 688 bestellt werden.

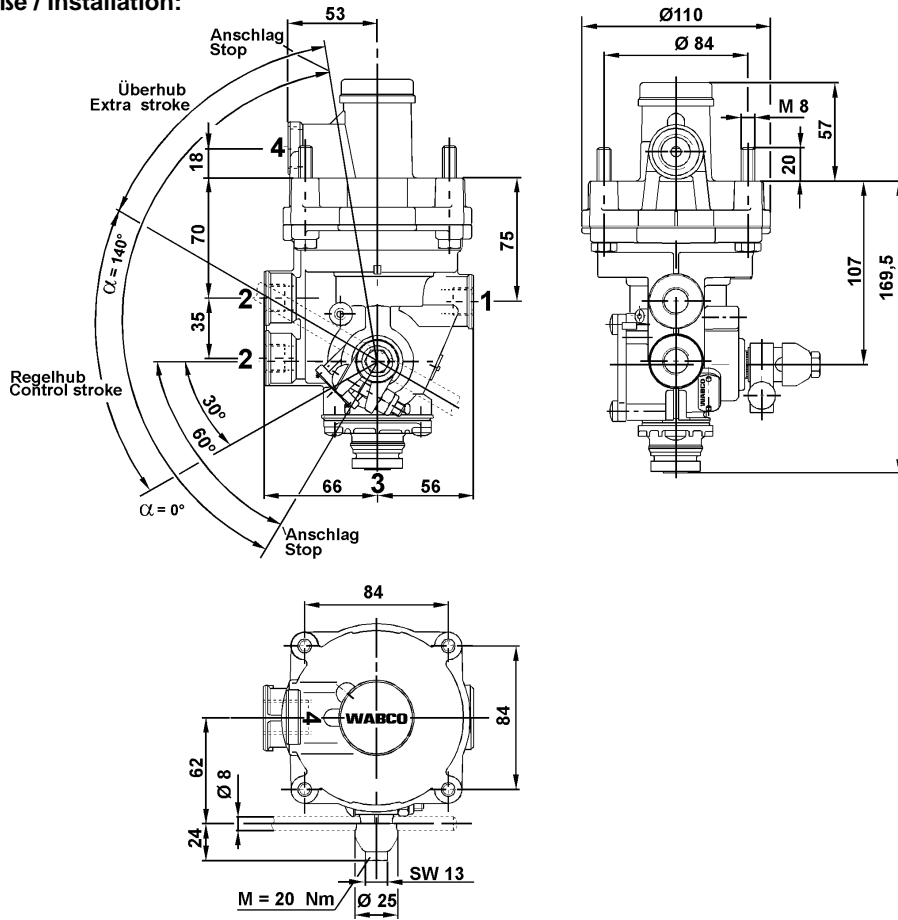
Automatischer Bremskraftregler

Load Sensing Valve

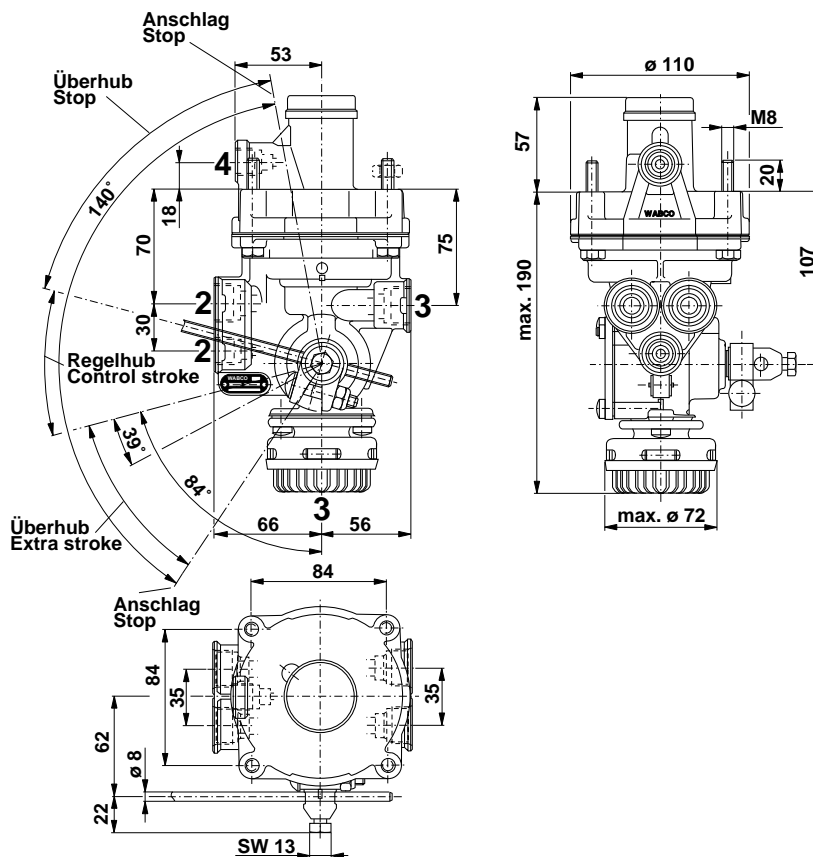
475 710

Einbaumaße / Installation:

Type 1



Type 2



Automatischer Bremskraftregler

Load Sensing Valve

475 710

Bestellnummer Part Number	Charakteristik / Characteristic	Symbol	Type	Anschlüsse / Ports
475 710 000 0		1	1	1= M 16x1,5 2= M 16x1,5 4= M 16x1,5 3= Schnapp
475 710 003 0		1	1	1= M 16x1,5 2= M 16x1,5 4= M 16x1,5 3= M 22x1,5
475 710 006 0		1	1	1= M 22x1,5 2= M 16x1,5 4= M 16x1,5 3= M 22x1,5
475 710 007 0		1	1	1= M 16x1,5 2= M 16x1,5 4= M 16x1,5 3= M 22x1,5
475 710 008 0		1	1	1= M 22x1,5 Voss 2= M 22x1,5 Voss 4= M 16x1,5 Voss 3= Schnapp
475 710 011 0		1	1	1= M 22x1,5 2= M 16x1,5 4= M 16x1,5 3= Schnapp

4

Automatischer Bremskraftregler

Load Sensing Valve

475 710

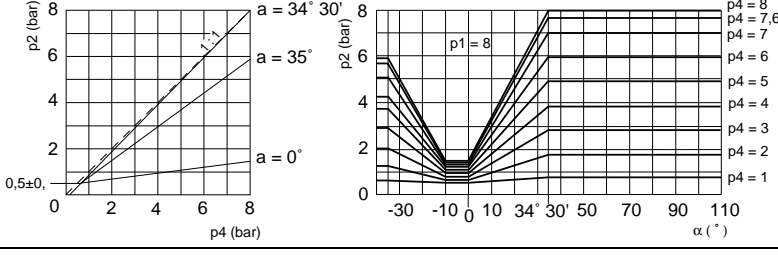
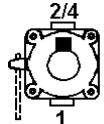
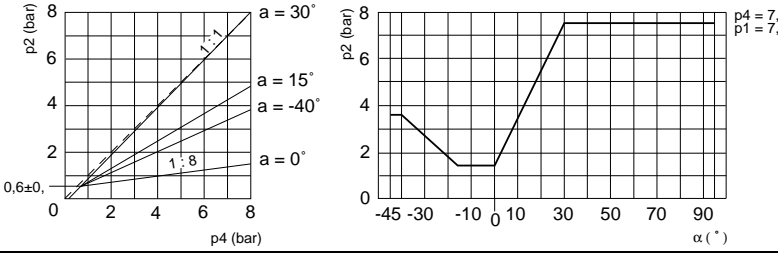
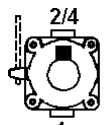
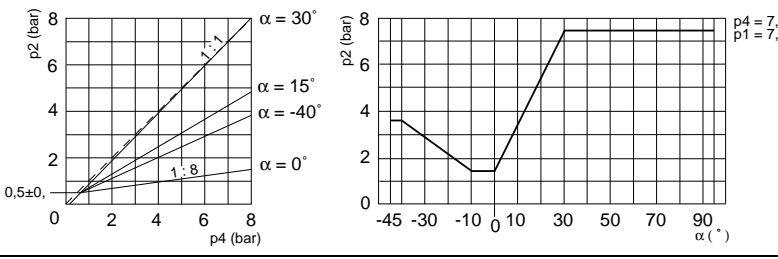
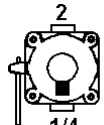
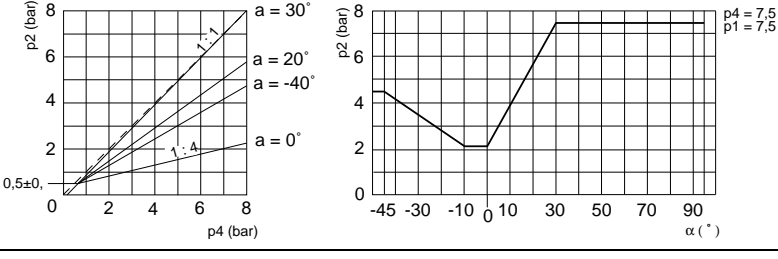
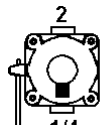
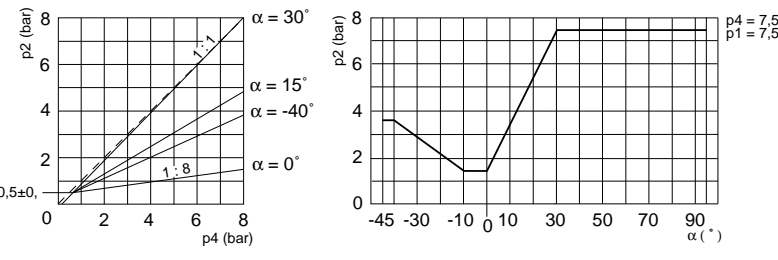
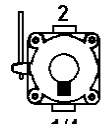
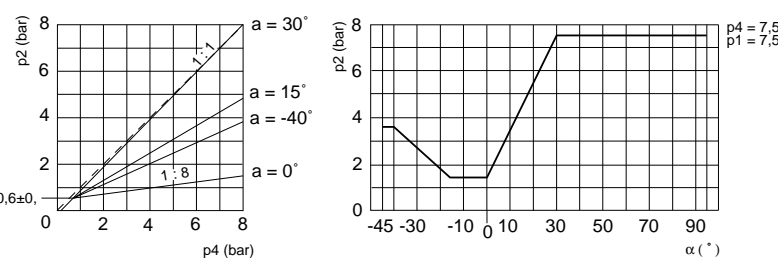
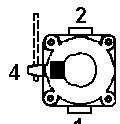
Bestellnummer Part Number	Charakteristik / Characteristic	Symbol	Type	Anschlüsse / Ports
475 710 012 0		1	1	1= M 22x1,5 Voss 2= M 22x1,5 Voss 4= M 16x1,5 Voss 3= Schnapp
475 710 013 0		1	1	1= M 16x1,5 2= M 16x1,5 4= M 16x1,5 3= Schnapp
475 710 016 0		1	1	1= M 22x1,5 Voss 2= M 22x1,5 Voss 4= M 16x1,5 Voss 3= Schnapp
475 710 020 0		1	1	1= M 16x1,5 2= M 16x1,5 4= M 16x1,5 3= Schnapp
475 710 021 0		1	1	1= M 22x1,5 2= M 16x1,5 4= M 16x1,5 3= Schnapp
475 710 022 0		1	1	1= M 22x1,5 2= M 16x1,5 4= M 16x1,5 3= Schnapp

Hebel / Lever: 475 710 711 2

Automatischer Bremskraftregler

Load Sensing Valve

475 710

Bestellnummer Part Number	Charakteristik / Characteristic	Symbol	Type	Anschlüsse / Ports
475 710 024 0		1	1	1= M 22x1,5 2= M 16x1,5 4= M 16x1,5 3= Schnapp 
475 710 025 0		1	1	1= M 22x1,5 2= M 16x1,5 4= M 16x1,5 3= Schnapp 
475 710 027 0		1	1	1= M 22x1,5 2= M 16x1,5 4= M 16x1,5 3= Schnapp 
Hebel / Lever: 475 701 712 2				
475 710 028 0		1	1	1= M 22x1,5 2= M 16x1,5 4= M 16x1,5 3= Schnapp 
Hebel / Lever: 475 710 711 2				
475 710 029 0		1	1	1= M 22x1,5 2= M 16x1,5 4= M 16x1,5 3= M Schnapp 
Hebel / Lever: 475 702 710 2				
475 710 030 0		1	1	1= M 22x1,5 2= M 16x1,5 4= M 16x1,5 3= M 22x1,5 

4

Automatischer Bremskraftregler

Load Sensing Valve

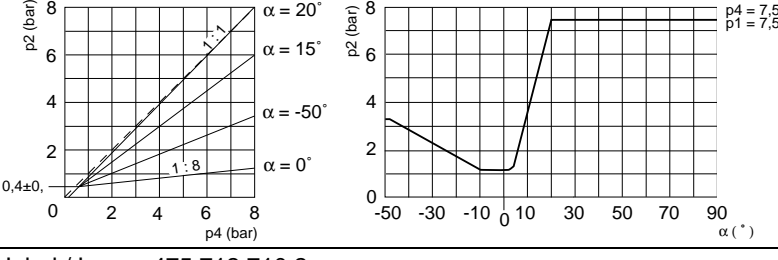
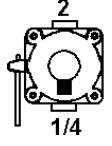
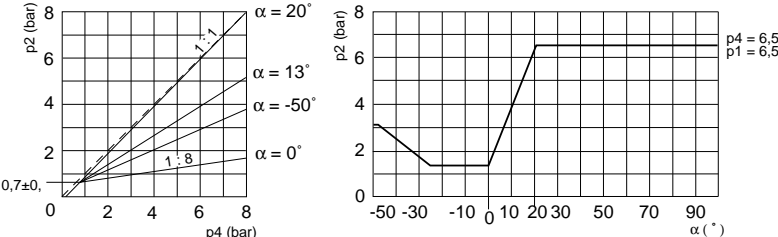
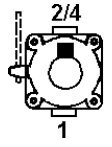
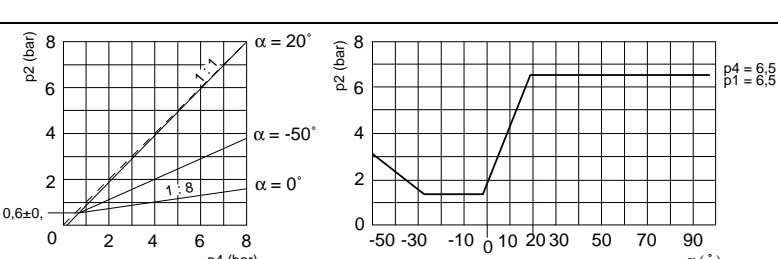
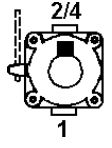
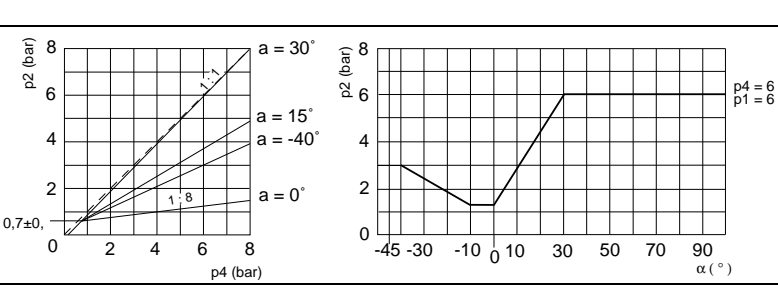
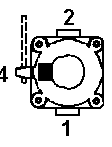
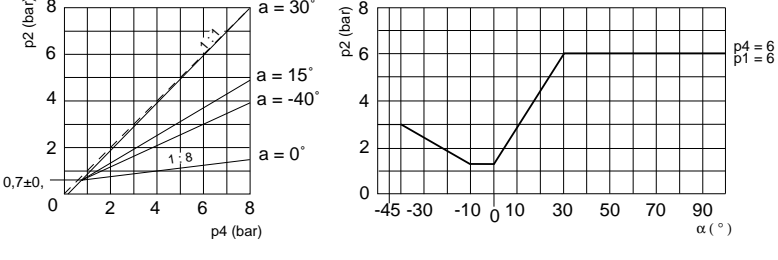
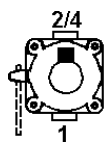
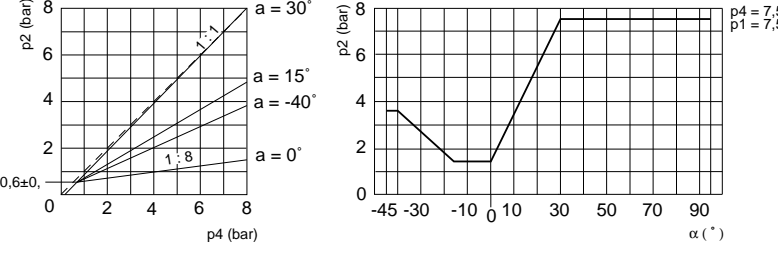
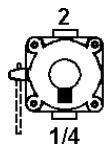
475 710

Bestellnummer Part Number	Charakteristik / Characteristic	Symbol	Type	Anschlüsse / Ports
475 710 031 0		1	1	1= M 22x1,5 2= M 16x1,5 4= M 16x1,5 3= M 22x1,5
475 710 032 0		1	1	1= M 22x1,5 2= M 16x1,5 4= M 16x1,5 3= M 22x1,5
475 710 033 0	<p>Hebel / Lever: 475 701 711 2</p>	1	1	1= M 22x1,5 2= M 16x1,5 4= M 16x1,5 3= Schnapp
475 710 035 0		1	1	1= M 22x1,5 RVI 2= M 16x1,5 RVI 4= M 16x1,5 RVI 3= Schnapp
475 710 036 0		1	1	1= M 22x1,5 Voss 2= M 22x1,5 Voss 4= M 16x1,5 Voss 3= Schnapp
475 710 039 0		1	1	1= M 22x1,5 Voss 2= M 22x1,5 Voss 4= M 16x1,5 Voss 3= Schnapp

Automatischer Bremskraftregler

Load Sensing Valve

475 710

Bestellnummer Part Number	Charakteristik / Characteristic	Symbol	Type	Anschlüsse / Ports
475 710 040 0	 <p>Hebel / Lever: 475 712 710 2</p>	1	1	1= M 22x1,5 2= M 16x1,5 4= M 16x1,5 3= Schnapp 
475 710 041 0		1	1	1= M 16x1,5 2= M 16x1,5 4= M 16x1,5 3= Schnapp 
475 710 042 0		1	1	1= M 22x1,5 Voss 2= M 22x1,5 Voss 4= M 16x1,5 Voss 3= Schnapp 
475 710 121 0		1	1	1= M 22x1,5 2= M 16x1,5 4= M 16x1,5 3= M 22x1,5 
475 710 122 0		1	1	1= M 22x1,5 2= M 16x1,5 4= M 16x1,5 3= M 22x1,5 
475 710 124 0		1	1	1= M 16x1,5 2= M 16x1,5 4= M 16x1,5 3= M 22x1,5 

4

Automatischer Bremskraftregler

Load Sensing Valve

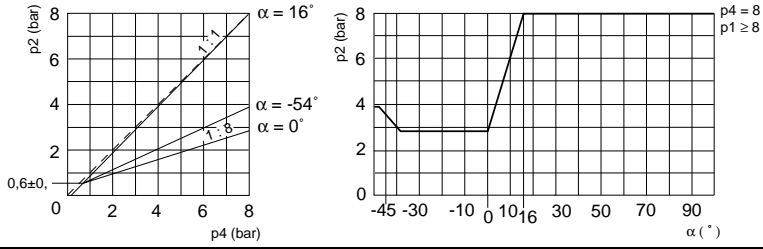
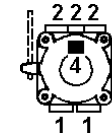
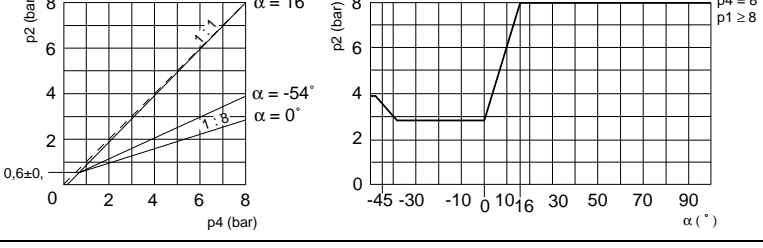
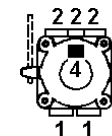
475 710

Bestellnummer Part Number	Charakteristik / Characteristic	Symbol	Type	Anschlüsse / Ports
475 710 128 0		1	1	1= M 22x1,5 2= M 16x1,5 4= M 16x1,5 3= Schnapp
475 710 129 0		1	1	1= M 22x1,5 2= M 16x1,5 4= M 16x1,5 3= Schnapp
475 710 130 0		1	1	1= M 16x1,5 2= M 16x1,5 4= M 16x1,5 3= Schnapp
475 710 131 0		1	1	1= M 16x1,5 2= M 16x1,5 4= M 16x1,5 3= M Schnapp
475 710 134 0		1	1	1= M 22x1,5 Voss 2= M 22x1,5 Voss 4= M 16x1,5 Voss 3= Schnapp
475 710 135 0		1	1	1= M 22x1,5 Voss 2= M 22x1,5 Voss 4= M 16x1,5 Voss 3= Schnapp

Automatischer Bremskraftregler

Load Sensing Valve

475 710

Bestellnummer Part Number	Charakteristik / Characteristic	Symbol	Type	Anschlüsse / Ports
475 710 136 0	 <p> $\alpha = 16^\circ$ $\alpha = -54^\circ$ $\alpha = 0^\circ$ </p> <p> p_2 (bar) p_4 (bar) α (°) $p_4 = 8$ $p_1 \geq 8$ </p> <p>Anschluß 3 / Port 3 = mit Geräuschdämpfer / with silencer</p>	2	2	1= M 22x1,5 Voss 2= M 22x1,5 Voss 2= M 16x1,5 Voss 4= M 16x1,5 Voss 
475 710 137 0	 <p> $\alpha = 16^\circ$ $\alpha = -54^\circ$ $\alpha = 0^\circ$ </p> <p> p_2 (bar) p_4 (bar) α (°) $p_4 = 8$ $p_1 \geq 8$ </p> <p>Anschluß 3 / Port 3 = mit Geräuschdämpfer / with silencer</p>	2	2	1= M 22x1,5 Voss 2= M 22x1,5 Voss 2= M 16x1,5 Voss 4= M 16x1,5 Voss 

4