

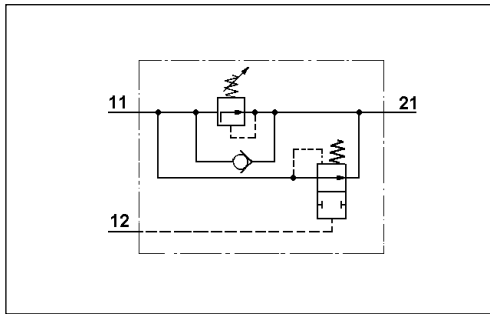
Automatischer Bremskraftregler

468 402

Load Sensing Valve



468 402 002 0 / 007 0



Technische Daten / Technical Data:

Betriebsdruck Operating Pressure	max. 150 bar
Zulässiges Medium Permissible Medium	Bremsflüssigkeit Brake fluid

Zweck:

Automatische Regelung der Bremskraft von Hydraulik-Radbremssylindern in Abhängigkeit vom Beladenzustand des Fahrzeugs.

Einbauempfehlung:

Der Regler ist waagrecht mit den Anschlüssen 11 und 12 nach oben weisend einzubauen. Die Befestigung erfolgt mit zwei Schrauben M8.

Purpose:

To automatically control the braking forces of hydraulically operated wheel brake cylinders according to the vehicle load.

Installation Requirement:

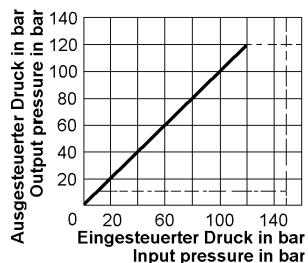
The valve must be installed horizontally with ports 11 and 12 pointing straight up. Mounting is accomplished with two M8 screws.

3

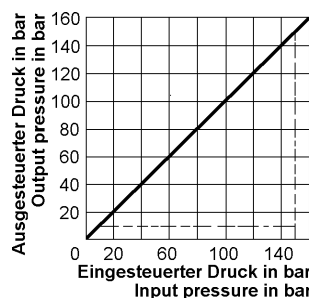
Bestellnummer Part Number	Type	Maß Dimension in mm			Regelbereich Operating Range in bar	Steuervolumen / Control Volume in cm ³				Thermischer Anwendungsbereich Operating Temperature Range
		L1	L2	L3		HA rear	VA front	HA rear	VA front	
468 402 002 0	1	88	60	3,2	10 bis/to 120	200	500	500	450	-40°C bis/to +80°C
468 402 007 0	1	112	80	4	10 bis/to 150	200	500	500	450	-40°C bis/to +80°C
468 402 008 0	2	95	60	3,2	30 bis/to 150	200	500	500	450	-40°C bis/to +100°C

Charakteristik / Characteristic:

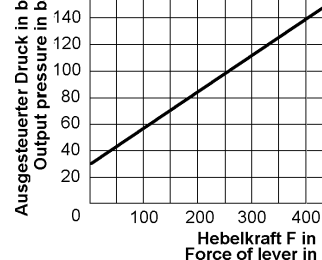
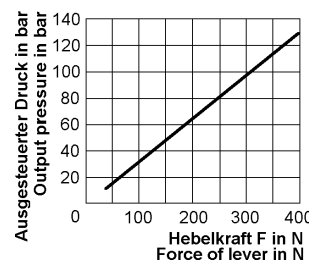
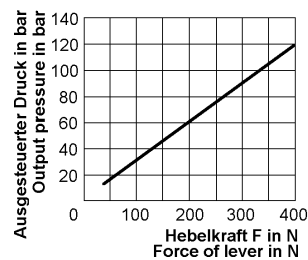
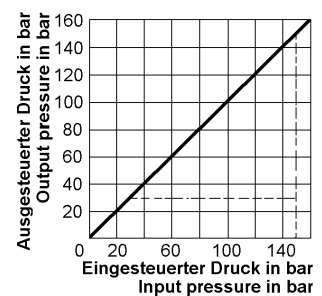
468 402 002 0



468 402 007 0



468 402 008 0



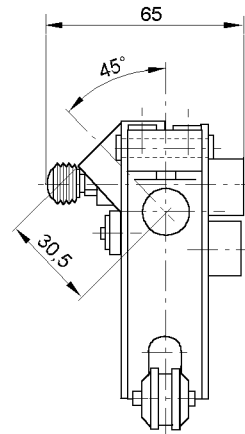
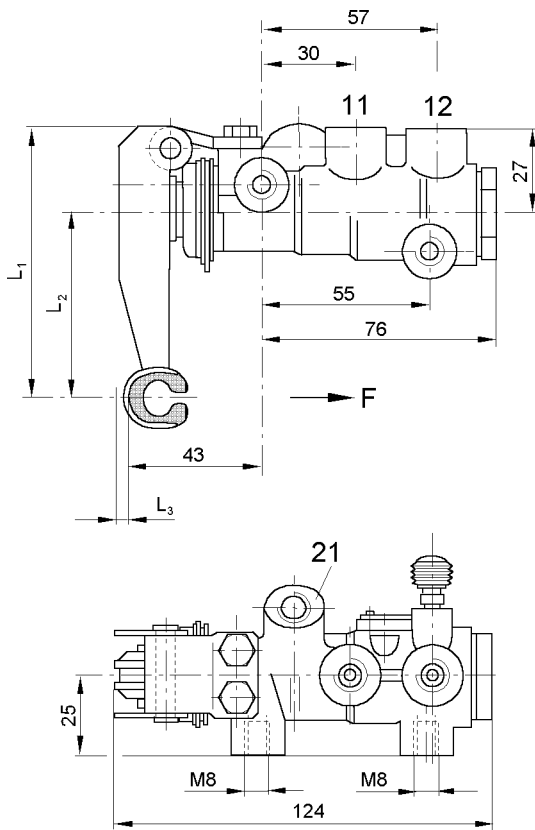
Automatischer Bremskraftregler

Load Sensing Valve

468 402

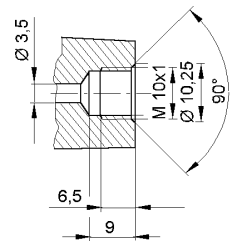
Einbaumaße / Installation:

Type 1

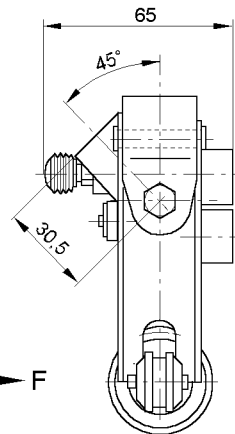
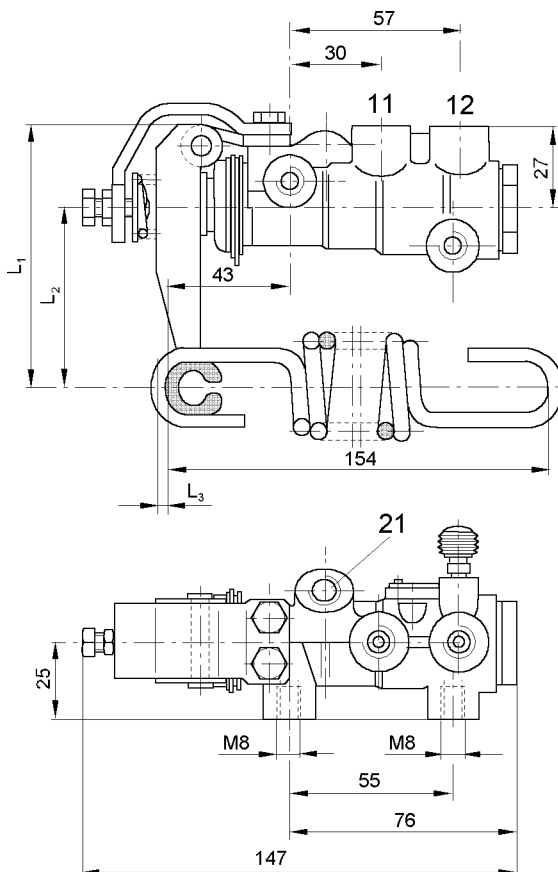


Anschlüsse / Ports:

- 11 = Energiezufuß HA-Kreis
Energy supply rear axle
- 12 = Energiezufuß VA-Kreis
Energy supply front axle
- 21 = Energiesbfluß HA-Kreis
Energy delivery rear axle



Type 2



Anschlüsse / Ports:

- 11 = Energiezufuß HA-Kreis
Energy supply rear axle
- 12 = Energiezufuß VA-Kreis
Energy supply front axle
- 21 = Energiesbfluß HA-Kreis
Energy delivery rear axle

