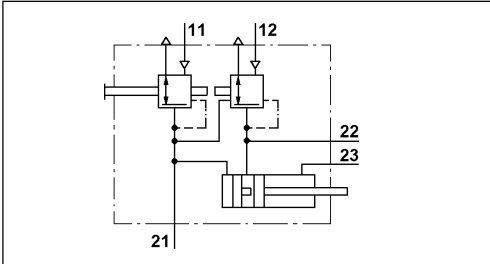
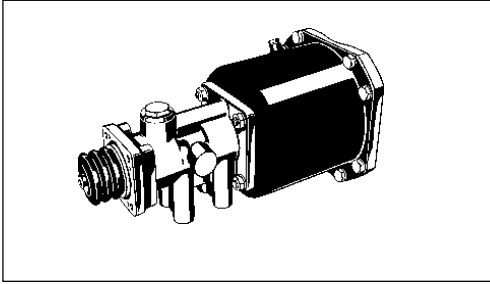


Bremsgerät

Dual Brake Booster

462 193



Technische Daten / Technical Data:

Bestellnummer Part Number	462 193 000 0
Betriebsdruck Operating Pressure	max. 8 bar
Zulässiges Medium Permissible Medium	Luft / air
Therm. Anwendungsbereich Operating temperature range	-40°C bis/to +80°C
Hub Stroke	75 mm
Kolbdurchmesser Piston Diameter	Ø 180 mm

Einbaumaße / Installation:

Zweck:

Verstärkung der Bremskraft. Durch Betätigung des Bremskraftverstärkers wird die Kraft erhöht, die auf den Hydraulik-Hauptzylinder wirkt.

Einbauempfehlung:

Das Gerät ist waagrecht zu installieren. Die Entlüftung muß nach unten weisen.

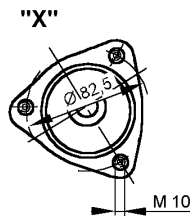
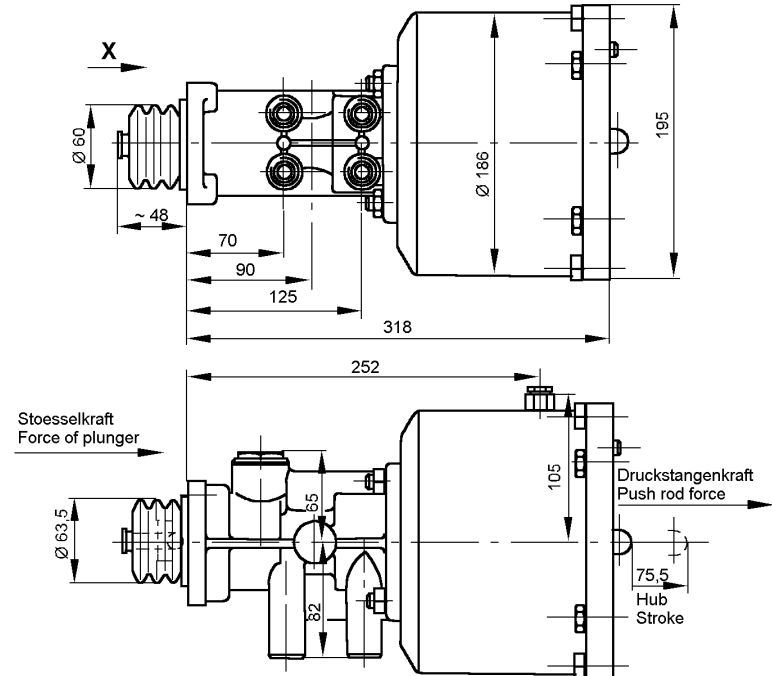
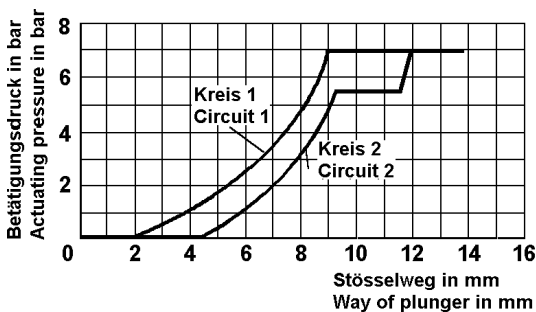
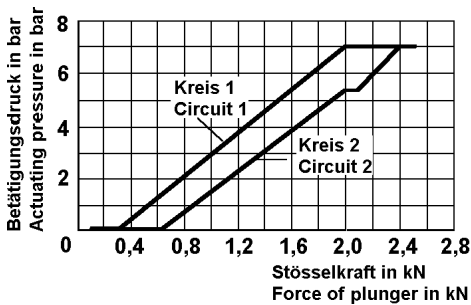
Purpose:

To intensify the brake force. By actuating the servo unit, the force acting on the hydraulic master cylinder is increased.

Installation Requirements:

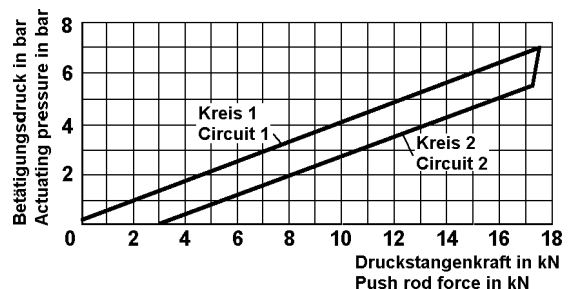
The servo unit is installed in a horizontal position. The exhaust must point downwards.

Charakteristik / Characteristic:



Anschlüsse / Ports:

- 11,12 = M 16x1,5 Energiezufuß / Energy supply
- 21,22 = M 16x1,5 Energieabfuß / Energy delivery
- 23 = M 10x1 Druckschalteranschluß / Pressure switch connection



3