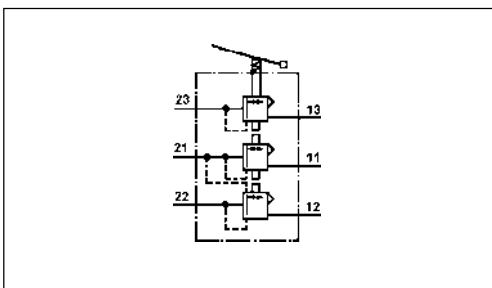


Motorwagen-Bremsventil

Brake Valve

461 478



Zweck:

Feinfühliges Be- und Entlüften der Zweikreis-Motorwagen-Betriebsbremsanlage, sowie pneumatische Steuerung des Retarders über das integrierte Druckregelventil.

Einbauempfehlung:

Das Bremsventil ist mit dem Betätigungs-gestänge zu verbinden und an einer geeigneten Stelle im Fahrzeug anzuordnen. Die Betätigungseinrichtung ist so anzulegen, daß der Gesamtweg am Ventil durchfahren werden kann. Zur Befestigung dienen Schrauben M 10.

Purpose:

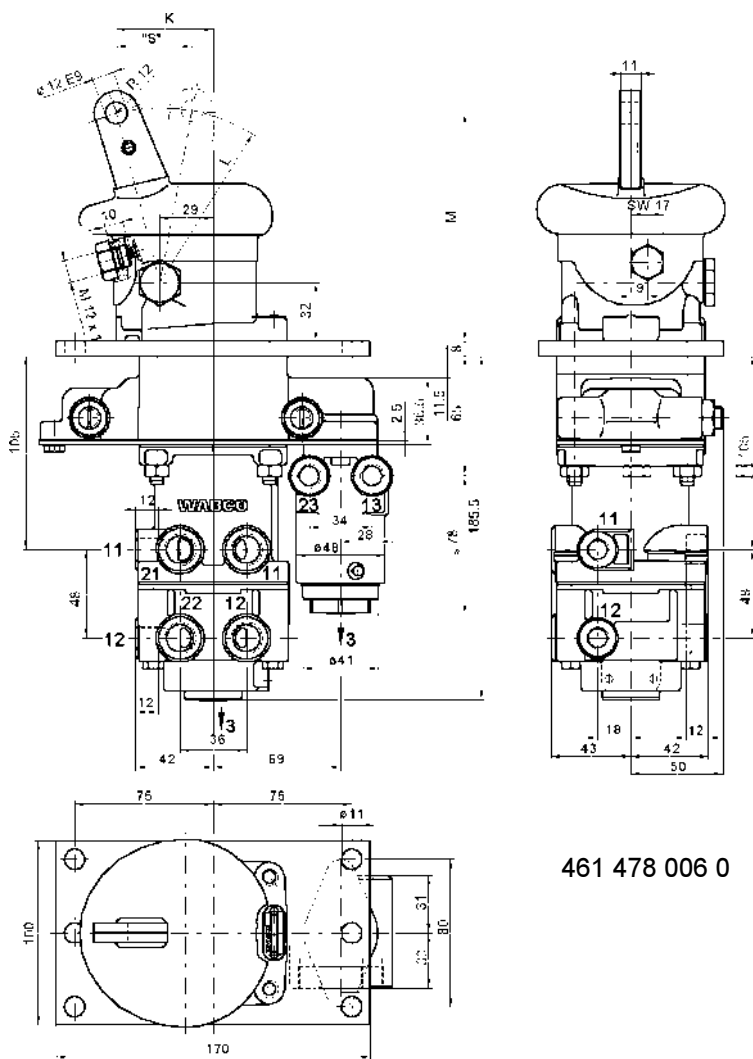
Sensitive increase and decrease of the air pressure in the towing vehicle's dual circuit service braking system and pneumatic control of the retarder via the integral pressure control valve.

Installation Requirement:

The brake valve should be installed with the actuating lever in a suitable position in the vehicle. By installing of the actuating unit it must be possible to use the complete way of the valve. The valve is fixed with screws M 10.

Technische Daten / Technical Data:	
Betriebsdruck Operating pressure	max. 8,5 bar
Zulässiges Medium Permissible medium	Luft / air
Therm. Anwendungsbereich Operating temperature range	-40°C bis/to +80°C
Nennweite Nominal diameter	Ø 10 mm
Voreilung (fest eingestellt) Predominance (fixed setting)	0,3 bar

Einbaumaße / Installation:



461 478 006 0

Anschlüsse / Ports:

461 478 000 0 / 461 478 004 0 / 461 478 006 0

- 11, 12 = M 16x1,5 Energiezufuß / Energy supply
- 11, 12 = M 12x1,5 Manometer, Energiezufuß
Gauge, Energy supply
- 21, 22 = M 16x1,5 Energieabfuß / Energy delivery
- 13, 23 = M 12x1,5 Druckregelventil
Pressure control valve

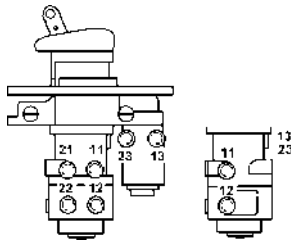
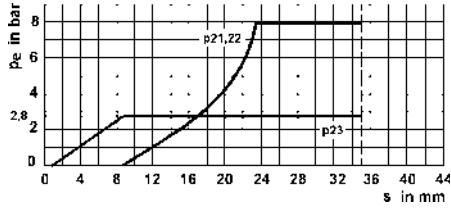
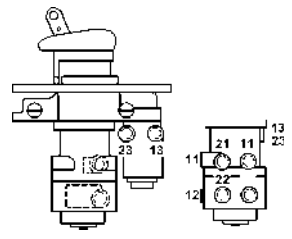
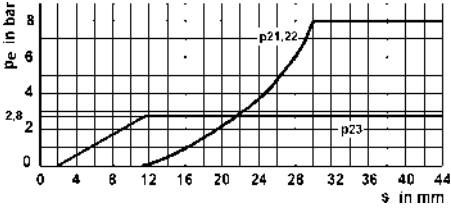
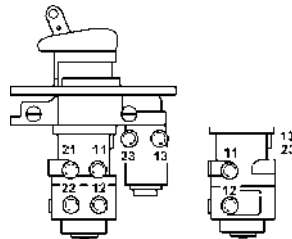
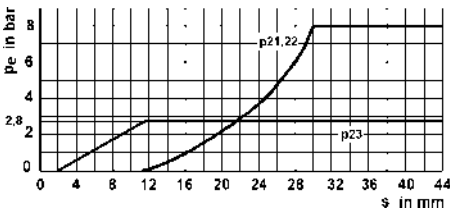
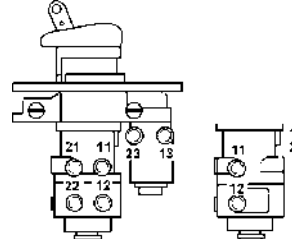
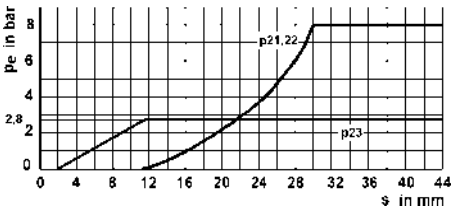
461 478 007 0

Gewindeausführung / Thread type = Parker

Motorwagen-Bremsventil

Brake Valve

461 478

Bestellnummer / Part Number A= Basisventil / Basic valve B= Druckregelventil / Pressure control valve C= Betätigung / Operating assy	Charakteristik / Characteristic	Abmaße Dimensions
<p>461 478 000 0</p> <p>A= 461 315 497 0 B= 461 324 520 0 C= 461 478 790 2</p> 		<p>K = 47 mm L = 76 mm M = 106 mm "s" = 35 mm</p>
<p>461 478 004 0</p> <p>A= 461 315 497 0 B= 461 324 520 0 C= 461 478 791 2</p> 		<p>K = 52,5 mm L = 95 mm M = 124 mm "s" = 44 mm</p>
<p>461 478 006 0</p> <p>A= 461 315 497 0 B= 461 324 520 0 C= 461 478 791 2</p> 		<p>K = 52,5 mm L = 95 mm M = 124 mm "s" = 44 mm</p>
<p>461 478 007 0</p> <p>A= 461 315 153 0 B= 461 324 526 0 C= 461 324 791 2</p> 		<p>K = 52,5 mm L = 95 mm M = 124 mm "s" = 44 mm</p>