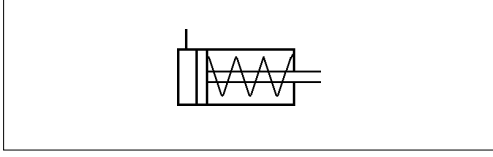
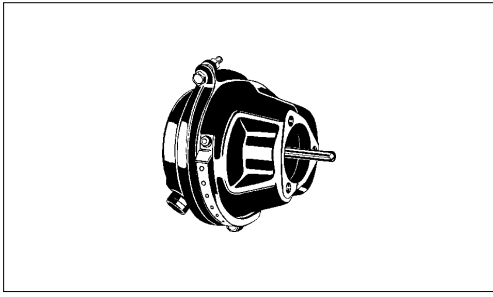


Membranzylinder

Brake Chamber

423 055

1



Technische Daten / Technical Data:	
Type	20
Betriebsdruck Operating Pressure	max. 10 bar
Zulässiges Medium Permissible Medium	Luft / air
Therm. Anwendungsbereich Operating temperature range	-40°C bis/to +80°C

Zweck :

Pneumatische Betätigung des angeflanschten hydraulischen Hauptbremszylinders in hydro-pneumatischen Bremsanlagen.

Einbauempfehlung:

Der Membran-Vorspannzylinder ist waagrecht mit den Atmungsbohrungen nach unten weisend einzubauen, damit eventuell eingedrungenes Wasser wieder herauslaufen kann.

Purpose:

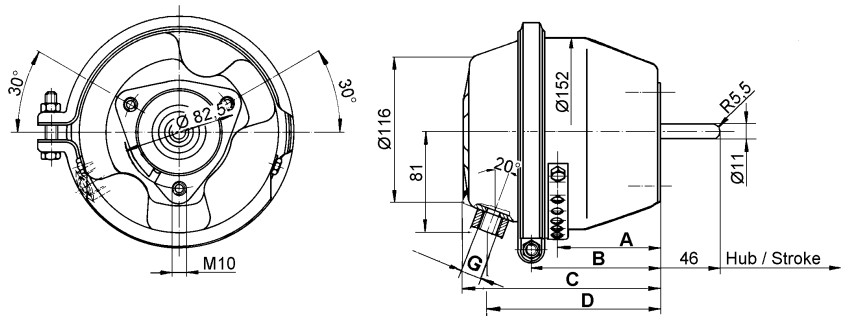
To pneumatically actuated attached master cylinder in a hydro-pneumatic brake system.

Installation Requirement:

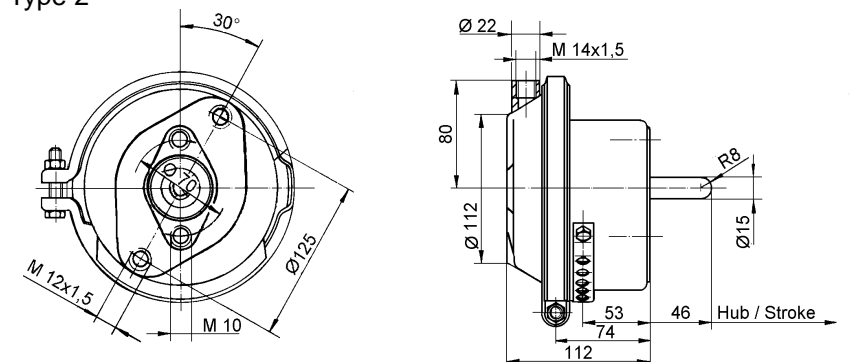
Install the air/hydraulic diaphragm horizontally, with bleed holes pointing downwards so that any water that is splashed into the unit can drain out.

Abmaße / Dimensions:

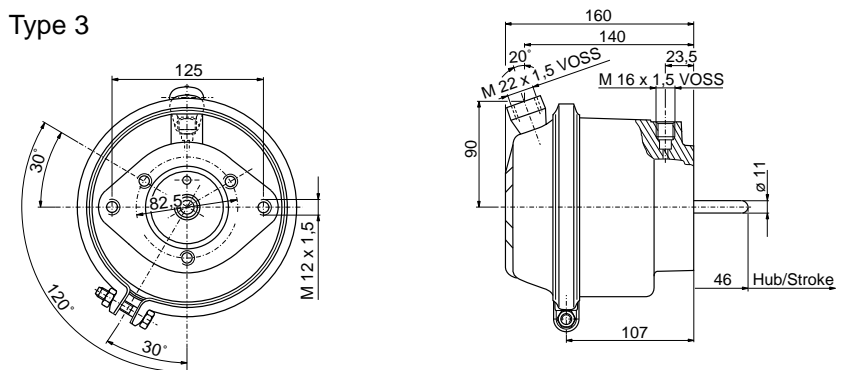
Type 1



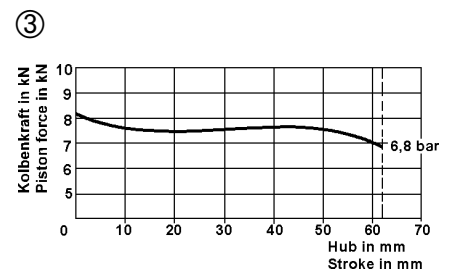
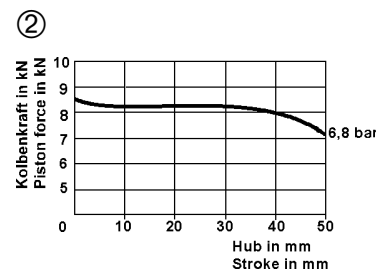
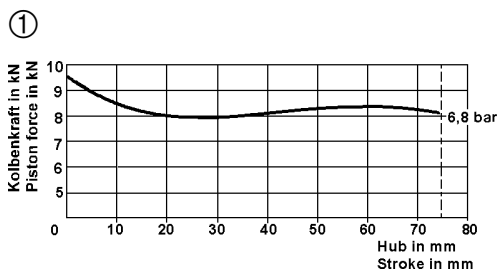
Type 2



Type 3



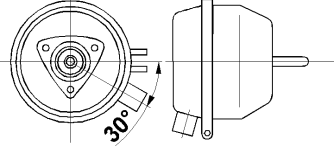
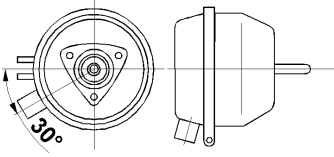
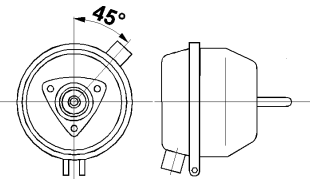
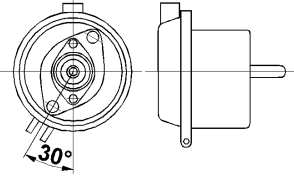
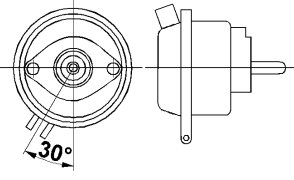
Charakteristik / Characteristic:



Membranzylinder

Brake Chamber

423 055

Bestellnummer Part Number	Type	Charakteristik Characteristic	Hub Stroke	Lage der Anschlüsse Position of ports	Abmaße Dimensions				
					A	B	C	D	G
423 055 000 0	1	1	75		72	97	147	128	M 16x1,5
423 055 001 0	1	1	75		72	97	148	128	M 16x1,5
423 055 006 0	1	3	62		70	95	129	131	M 22x1,5 Voss
423 055 050 0	2	2	50		siehe Zeichnung see drawing				
423 055 100 0	3	1	75		siehe Zeichnung see drawing				