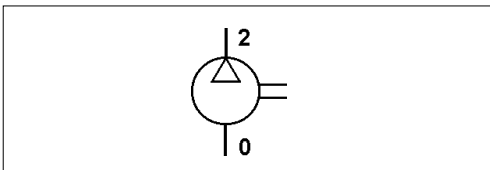
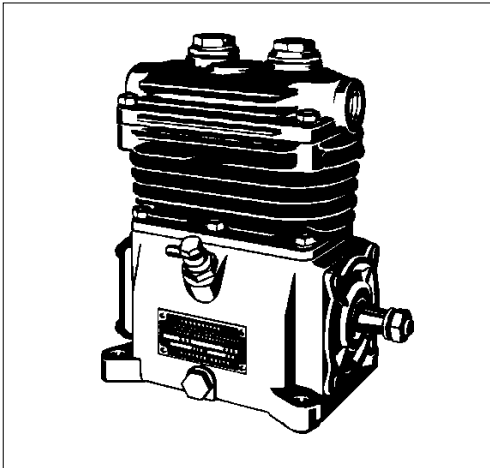


Zweizylinder-Kompressor

Twin Cylinder Air Compressor

411 503

1

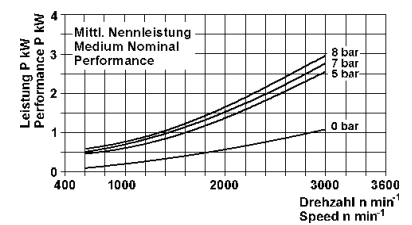
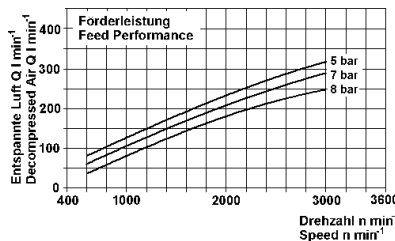


Technische Daten / Technical Data:

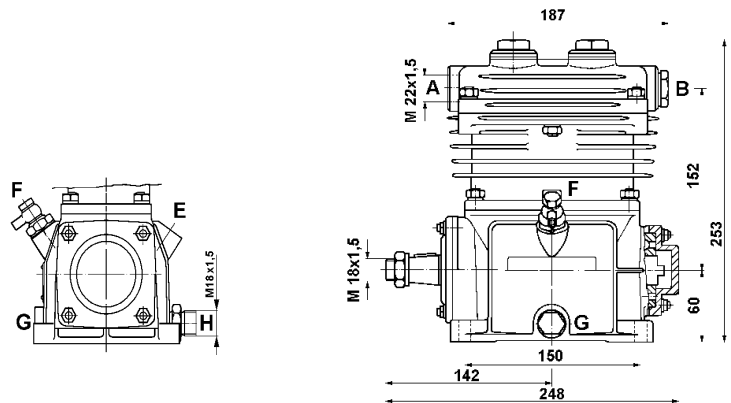
Type	NDR
Bohrung Bore	2 x Ø 60 mm
Hub Stroke	34 mm
Hubvolumen Swept volume	192 cm ³
Betriebsdruck Operating pressure	max. 8 bar
Kühlung Cooling	Luft air
Betriebsdrehzahl Normal speed	2800 U/min
Schmierart Type of lubrication	UD
Gewicht Weight	9,4 kg

Zweck:
Erzeugung von Druckluft in Fahrzeugen.
Einbauempfehlung:
siehe Broschüre 826 001 099 3

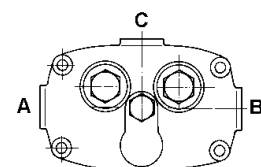
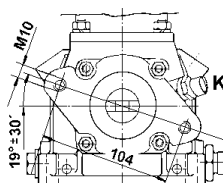
Purpose:
To generate compressed air in vehicles.
Installation Requirement:
see brochure 826 001 099 3



Einbaumaße / Installation:



Vickers Flansch / Vickers flange



Bestellnummer Part Number	Flansch Flange	Anschlüsse / Ports								Bemerkungen Comments
		A	B	C	E	F	G	H	K	
411 503 717 0	-	0	2*	2	-	-	82*	82	81	
411 503 741 0	Vickers	0	2	2*	-	-	82*	82	81	

* mit Stopfen verschlossen / closed with plug