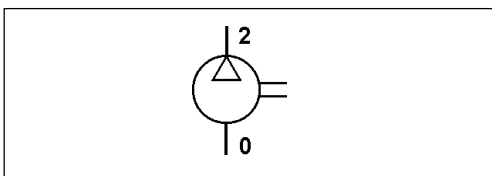


# Einzylinder-Kompressor

Single Cylinder Air Compressor

411 141

1



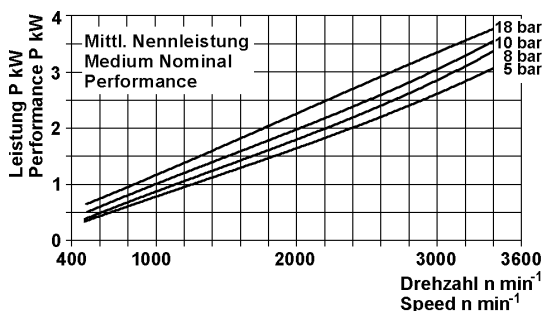
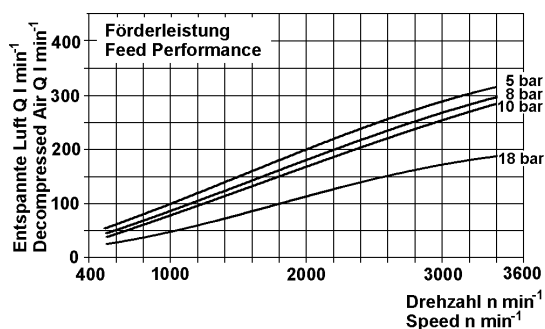
**Zweck:**  
Erzeugung von Druckluft in Fahrzeugen.

**Einbauempfehlung:**  
siehe Broschüre 826 001 099 3

**Purpose:**  
To generate compressed air in vehicles.

**Installation Requirement:**  
see brochure 826 001 099 3

Technische Daten / Technical Data:	
Type	HDR
Bohrung Bore	Ø 75 mm
Hub Stroke	36 mm
Hubvolumen Swept volume	159 cm <sup>3</sup>
Schmierart Type of lubrication	UD
Luftkühlung / Air cooling	
Betriebsdruck Operating pressure	max. 18 bar
Betriebsdrehzahl Normal speed	max. 3000 U/min
Überdrehzahl, kurzzeitig Overspeed, temporary	1,3 x n max.
Kühlluftgeschwindigkeit Cooling air speed	< 8 bar 4 m/s > 8 bar 6 m/s
Ölkühlung / Oil cooling	
Betriebsdruck Operating pressure	max. 16 bar
Betriebsdrehzahl Normal speed	max. 3000 U/min
Überdrehzahl, kurzzeitig Overspeed, temporary	1,3 x n max.
Kühlölmenge Cooling oil Volume	6 l/min



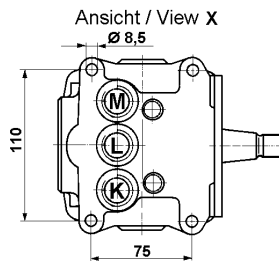
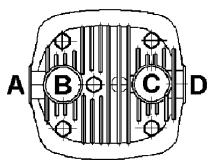
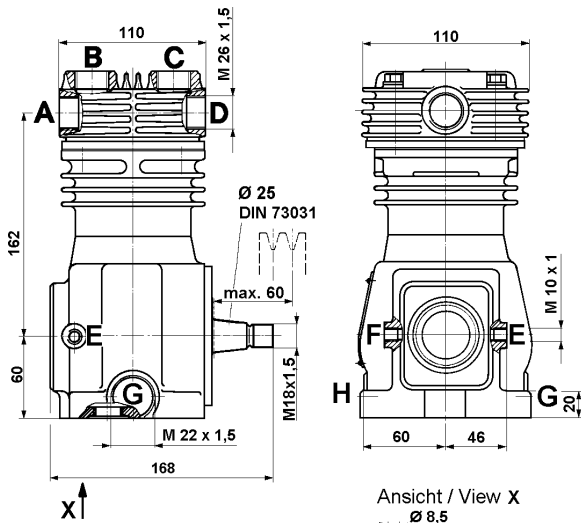
# Einzylinder-Kompressor

## Single Cylinder Air Compressor

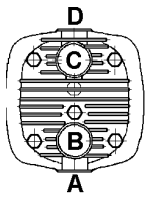
411 141

Einbaumaße / Installation:

Type: 1. 1

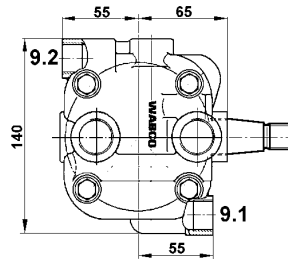
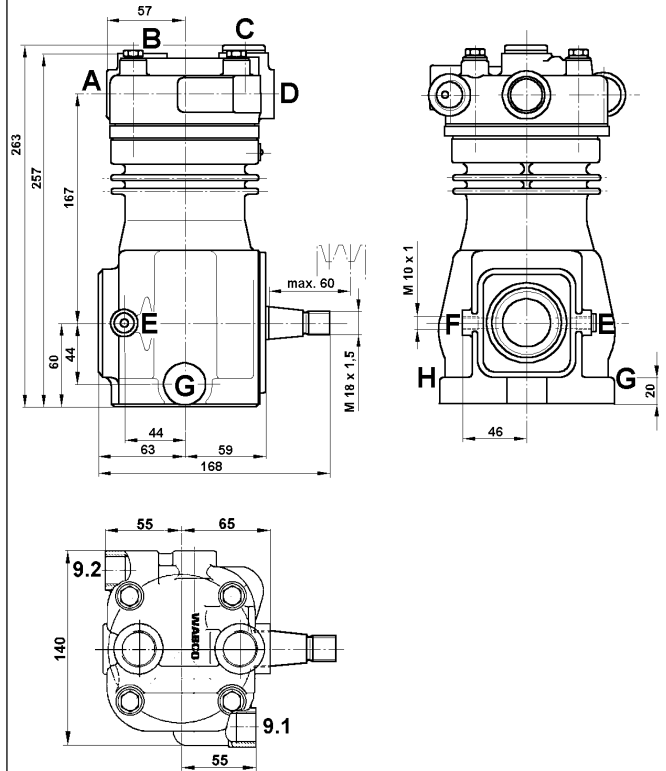


Type: 1. 2

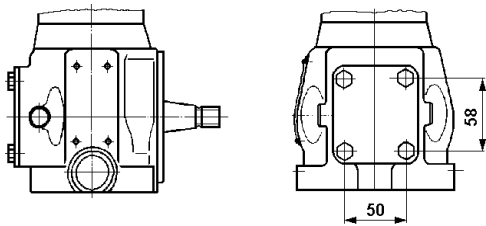


L1 = M 22x1,5  
L2, K, M = Ø 19

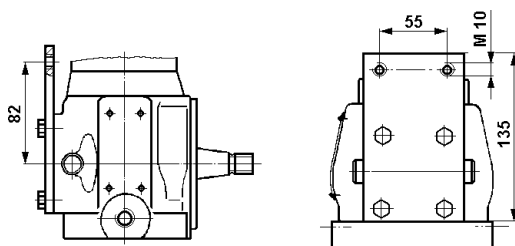
Type: 2



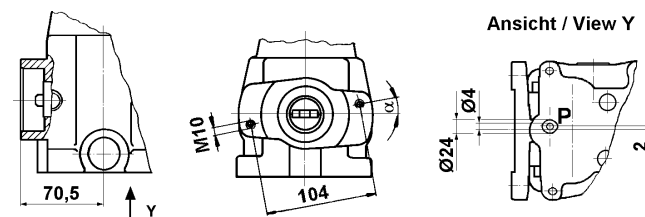
Type: 1. 3



Type: 1. 4



Vickers Flansch / Vickers flange



# Einzylinder-Kompressor

## Single Cylinder Air Compressor

# 411 141

# 1

Bestellnummer Part Number	Kühlung Cooling	Type	Anschlüsse / Ports													Bemerkungen Comments
			A	B	C	D	E	F	G	H	K	L1	L2	M	P	
411 141 000 0	Luft air	1. 3	0*	0	2	2*	81*	81	82*	82*	-	82*	-	-	-	
411 141 001 0		1. 1	2	-	-	0	-	81	-	82	-	-	-	-	-	mit Riemenscheibe (8 Keilrillen) with belt pulley (8 grooves)
411 141 002 0		1. 3	2*	2	0	0*	81*	81	82*	82*	-	82*	-	-	-	
411 141 003 0		1.1	0	-	-	2	-	81	-	82	-	-	-	-	-	mit Riemenscheibe (8 Keilrillen) with belt pulley (8 grooves)
411 141 004 0		1.1	2	-	-	0	-	81	-	82	-	-	-	-	-	
411 141 005 0		1.2	2*	2	0	0*	81	-	-	82	-	82*	-	-	-	
411 141 501 0		1.1	2*	2	0	-	81	-	82	-	-	-	-	-	-	
411 141 503 0		1. 1	0	0*	-	2	81	81*	82	82*	-	-	-	-	-	
411 141 504 0		1. 1	0*	0	-	2	81	81*	82*	82	-	-	-	-	-	
411 141 506 0		1.1	-	0	-	2	81	81*	82*	82	-	82*	-	-	-	
411 141 507 0		1. 2	2	-	-	0*	81	-	-	82	-	-	-	-	-	
411 141 551 0		Wasser Öl water oil	2	-	0	2*	2	81*	81	-	82	-	-	-	-	
411 141 640 0	Luft air	1. 4	2	-	-	0	-	81	82	-	-	-	-	-		
411 141 702 0		1.2	2	-	-	0	-	81	-	82	-	-	-	-		
411 141 703 0		1.2	0	-	-	2	-	81	-	82	-	-	-	-		
411 141 800 0		1. 1	0	-	-	2	81	-	-	-	-	-	82	-		
411 141 805 0		1. 1	0	-	-	2	81*	81	-	-	-	-	-	82	-	
411 141 818 0		1. 1	0	-	2	2*	81	-	-	-	82	-	-	-	mit Vickers Flansch with Vickers flange	
411 141 835 0		1. 1	-	0	2	2*	-	81	-	-	-	-	82	-		
411 141 845 0		1. 1	-	0	-	2	-	81	-	-	-	-	82	-		
411 141 910 0		1. 1	0*	0	-	2	-	-	-	-	82	-	-	-	81	mit Vickers Flansch with Vickers flange

\*) mit Stopfen verschlossen / closed with plug