

## Installation process for WABCO EasyFit™ – Automatic Slack Adjusters (ASA)

### CAUTION

Prior to beginning any service or inspection, make sure the vehicle is properly parked with the parking brakes applied and wheels chocked.

The chamber should be manually caged or air pressure applied to port 12 to fully retract the push rod.

- Apply a suitable lubricant to the splines of the cam shaft.
- Install one thrust washer to the camshaft.

Depending on the length of the spline and alignment of the ASA and clevis two or more washers may be needed.

Some cam assemblies have a shoulder/ washer built into the inner cam assembly.

- Install the ASA on S-Cam spline.
- Install outer thrust washer(s).
- Install outer lock ring to the splined end of the camshaft.

After completion of the steps above there should be some lateral movement of the ASA.

<0.060” is acceptable.

- Install the mounting bracket, torque the anchor bracket fasteners to 8-12 ft. lbs. (10.8-16.2Nm)
- Position the ASA control arm slot with the mounting bracket slot and install the control arm anchor pin and torque to 40-50 ft. lbs. (54.23-67.79Nm). Refer to figure 2 on page 2 for the preferred position.
- Rotate the adjusting hexagon nut clockwise, to align the ASA mounting hole with the Clevis hole.
- Attach the Clevis, Clevis pin assembly, mounting jam nut and tighten jam nut to 45 ft. lbs (61.0Nm). A suitable lubricant should be applied to the clevis pin.
- Rotate the adjusting hexagon nut clockwise until both brake shoe linings contact the drum.

Lining gap of both shoes should now be zero.

- Rotate the adjusting hexagon nut counter clockwise ½ turn.

Lining gap should now be acceptable.

- Ensure wheels are blocked and the air system and resevoir is charged to 90-100 psi.
- Apply and release the service brake pedal 5-10 times and evaluate pedal travel.
- Check applied stroke measurements for compliance with OEM guidelines.
- After 10k miles miles check stroke measurements for compliance with OEM, CVSA or FMCSA guidelines.

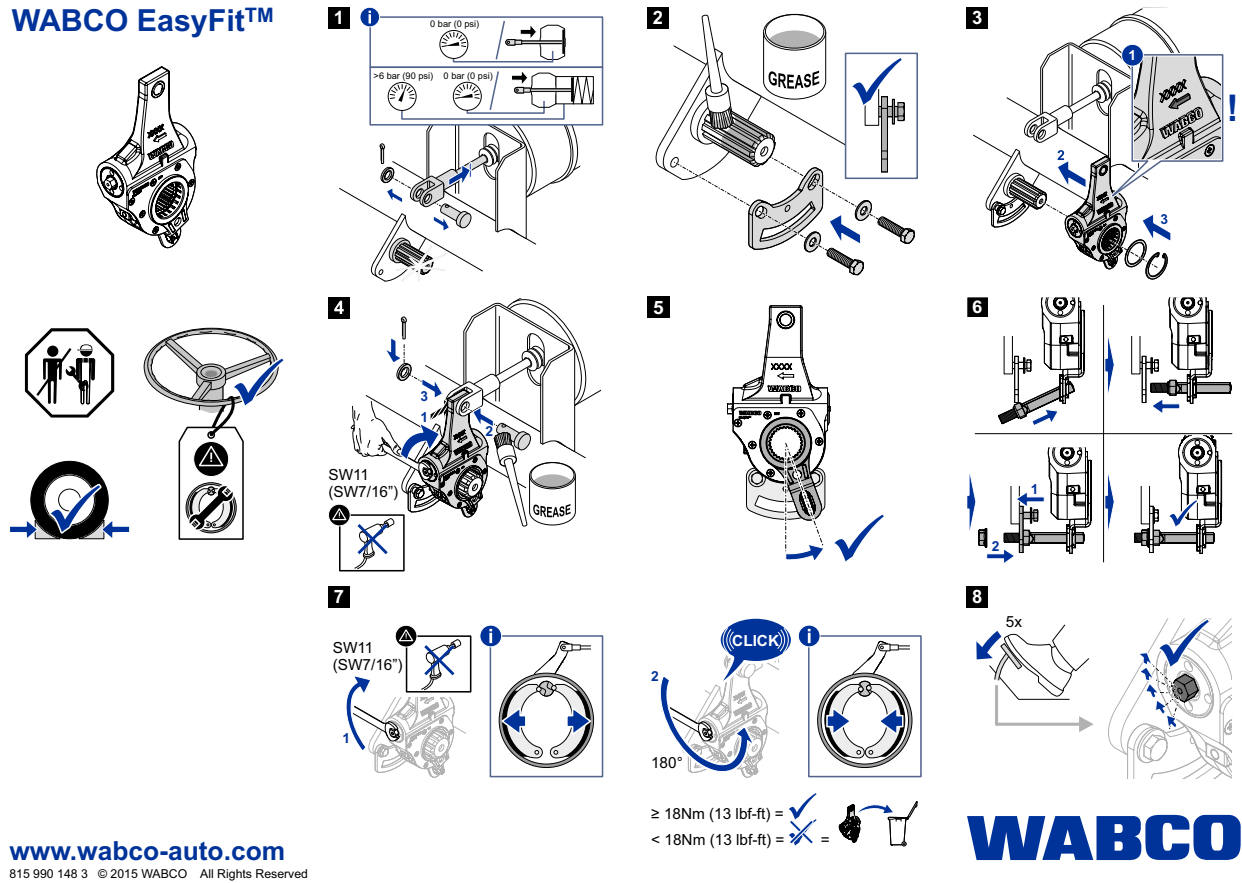


<https://www.fmcsa.dot.gov/regulations/title49/section/393.47>

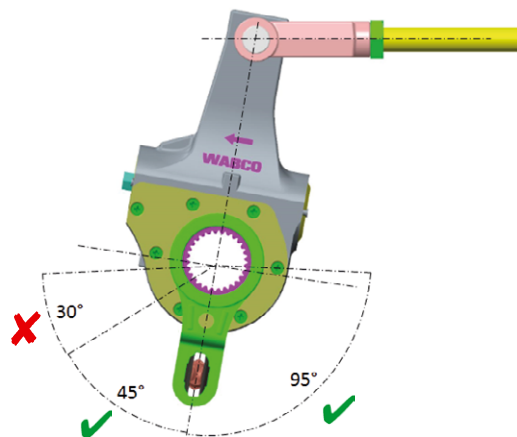
393.47 Brake actuators, slack adjusters, linings/pads and drums/rotors

<http://cvsa.org/>

**Figure 1: Visual Installation process for WABCO EasyFit™ – Automatic Slack Adjusters**



**Figure 2: The preferred initial mounting position of the control arm can be in the 45° to 95° area shown below**



This Service Bulletin is relevant to the operation or maintenance of WABCO products. Failure to observe guidance in Service Bulletin may void your limited warranty. This Service Bulletin does not express or imply any additional warranties, warranty extensions or other guarantees. The data presented in this document is accurate to the best of our knowledge.

Please consult our website Terms of Use for more information.

<http://www.wabco-auto.com/footer/legal/copyrightterms-of-use/>