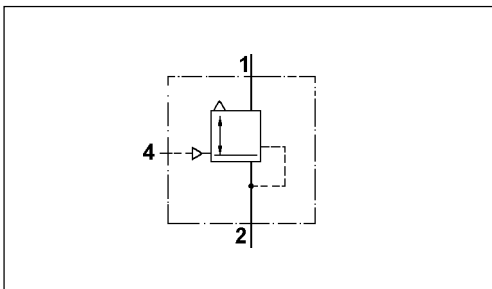


Válvula relé

Relay Valve

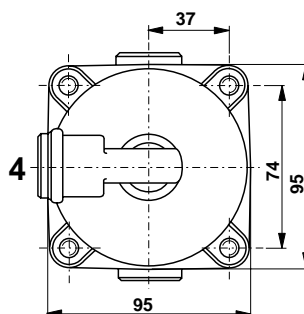
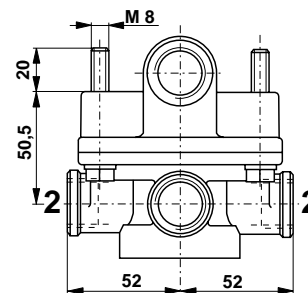
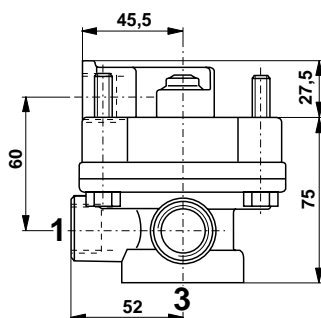
973 001



Datos técnicos / Technical Data:

Presión de funcionamiento Operating pressure	ver tabla see table
Medio Permissible medium	aire / air
Rango de temperatura Operating temperature range	-40°C a/to +80°C
Diámetro nominal Nominal diameter	Ø 15 mm

Instalación / Installation:



Propósito:

Suministro y evacuación de forma rápida del aire comprimido de un equipo neumático y reducción de los tiempos de respuesta en sistemas neumáticos de freno.

Requisitos de instalación:

Para fijar la válvula relé, use dos de los 4 tornillos de conexión M8. La válvula debe montarse con el escape 3 apuntando hacia abajo.

Purpose:

To rapidly supply and evacuate compressed air from pneumatic equipment and to reduce response times in pneumatic braking systems

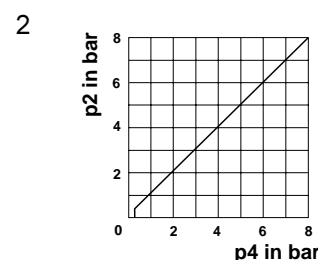
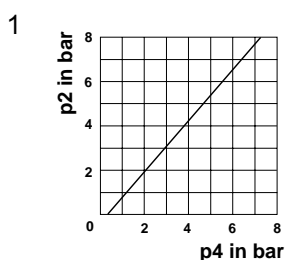
Installation Requirement:

For fastening the relay valve, use two of the four housing connection screws M8. The valve must be mounted with exhaust 3 pointing downwards.

Bocas / Ports:

- 1 = Entrada / Energy supply
- 2 = Salida / Energy delivery
- 4 = Control presión/ Control pressure

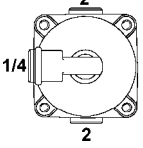
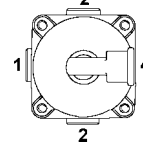
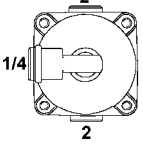
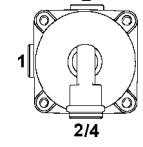
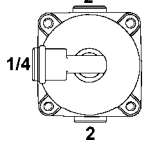
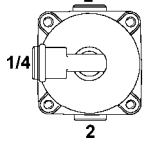
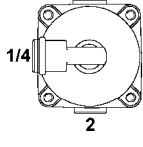
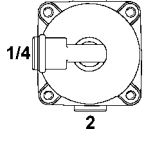
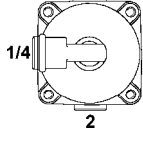
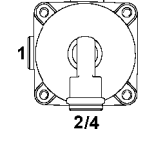
Característica / Characteristic:



Válvula relé

973 001

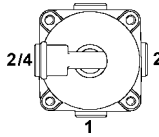
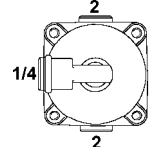
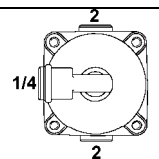
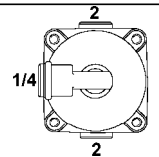
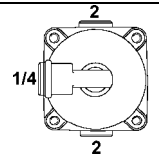
Relay Valve

Referencia Part Number	Pres. func. Oper. pressure	Bocas / Ports					Posición / Position	característica Characteristic
		1	2	4	3			
973 001 010 0	8 bar	M 22x1,5	M 22x1,5	M 22x1,5	-			1
973 001 012 0	8 bar	M 22x1,5	M 22x1,5	M 22x1,5	-			1
973 001 013 0	8 bar	M 22x1,5	M 22x1,5	M 22x1,5	M 22x1,5			1
973 001 014 0	8 bar	M 22x1,5	M 22x1,5	M 22x1,5	-			1
973 001 016 0	8 bar	M 22x1,5	M 22x1,5	M 16x1,5	-			1
973 001 018 0	10 bar	M 22x1,5	M 22x1,5	M 22x1,5	Schnapp			1
973 001 020 0	10 bar	M 22x1,5	M 16x1,5	M 16x1,5	-			1
973 001 021 0	10 bar	M 22x1,5	M 16x1,5	M 16x1,5	M 22x1,5			1
973 001 030 0	8 bar	M 22x1,5	M 22x1,5	M 22x1,5	-			1
973 001 031 0	8 bar	M 22x1,5	M 22x1,5	M 22x1,5	-			1

Válvula relé

Relay Valve

973 001

Referencia Part Number	Pres. func. Oper. pressure	Bocas / Ports					Característica Characteristic
		1	2	4	3	posición Position	
973 001 032 0	8 bar	M 22x1,5	M 22x1,5	M 22x1,5	-		1
973 001 210 0	10 bar	M 22x1,5	M 22x1,5	M 16x1,5	-		2
973 001 211 0	10 bar	M 22x1,5	M 22x1,5	M 16x1,5	M 22x1,5		2
973 001 220 0	10 bar	M 22x1,5	M 16x1,5	M 16x1,5	-		2
973 001 221 0	10 bar	M 22x1,5	M 16x1,5	M 16x1,5	M 22x1,5		2