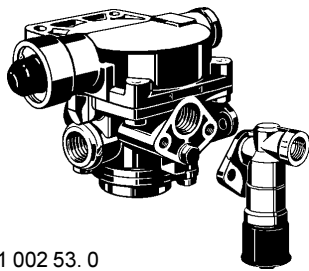


# Válvula relé de urgencia

Relay Emergency Valve

971 002

Parte 1 / Part 1



971 002 53. 0

### Datos técnicos / Technical Data:

Presión de funcionamiento Operating pressure	ver tabla see table
Medio Permissible medium	aire / air
Rango de temperatura Operating temperature range	-40°C a / to +80°C

### Propósito:

Controlar el sistema doble de freno.

### Requisitos de instalación:

Debe instalarse verticalmente, con el escape apuntando hacia abajo.  
Para el montaje, utilice 2 tornillos M10.

### Purpose:

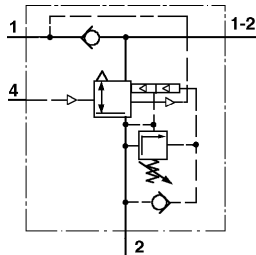
To control the dual-line braking system.

### Installation Requirements:

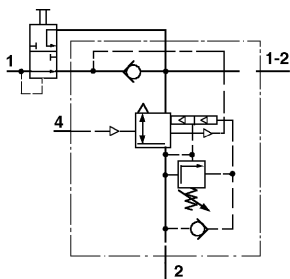
The relay emergency valve must be installed vertically with the exhaust pointing downwards. For mounting, use two screws M10.  
Die technischen Daten für die Bremskraftregler sowie für das Löseventil können auch den entsprechenden Blättern entnommen werden.

Para información técnica de los reguladores de presión y de las válvulas de aflojamiento, vea también las hojas técnicas correspondientes.

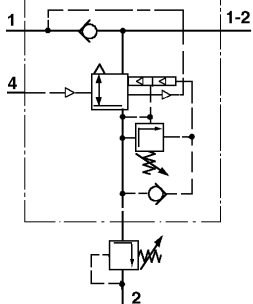
For technical data of apportioning valve and release valve also see the appropriate sheets.



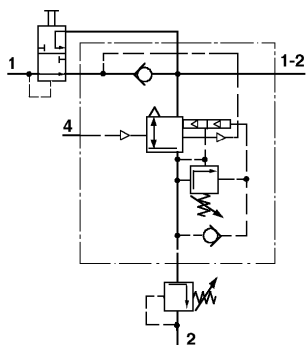
Símbolo 1



Símbolo 2



Símbolo 3



Símbolo 4

# Válvula relé de urgencia

Relay Emergency Valve

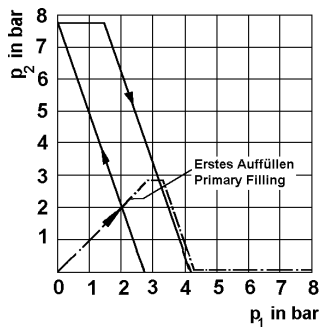
971 002

Parte 1 / Part 1

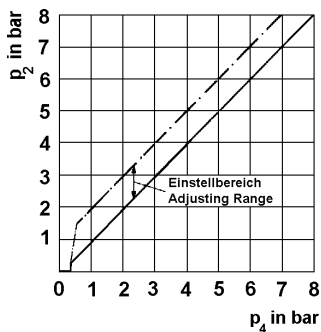
Referencia Part Number	Válvula relé Brake Valve	Regulador de presión Load Apportioning Valve	V. aflojamiento Release Valve	Símbolo	Predominancia fijada Predominance fixed at
971 002 150 0	-	-	-	1	0 bar
971 002 153 0	-	-	-	1	0,2 bar
971 002 531 0	971 002 150 0	-	963 001 012 0	2	0 bar
971 002 532 0	971 002 153 0	-	963 001 013 0	2	0,2 bar
971 002 533 0	971 002 150 0	-	963 001 013 0	2	0 bar
971 002 570 0	971 002 150 0	475 604 011 0	-	3	0 bar
971 002 580 0	971 002 150 0	475 604 041 0	-	3	0 bar
971 002 620 0	971 002 150 0	475 604 013 0	963 001 012 0	4	0 bar

## Característica / Characteristic:

Freno de emergencia  
Emergency Braking

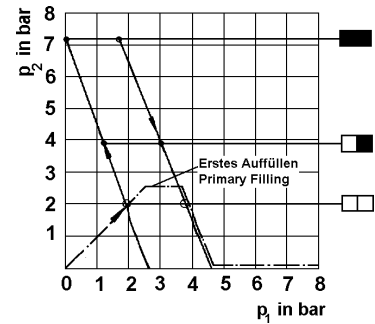


Freno de servicio  
Service Braking

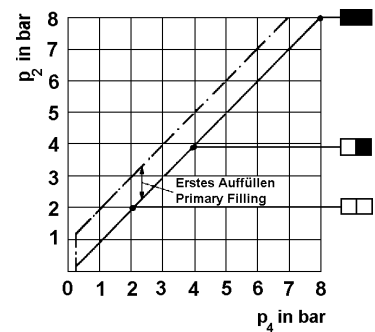


sin regulador de presión  
without Load Apportioning Valve

Freno de emergencia  
Emergency Braking



Freno de servicio  
Service Braking



con regulador de presión  
with Load Apportioning Valve

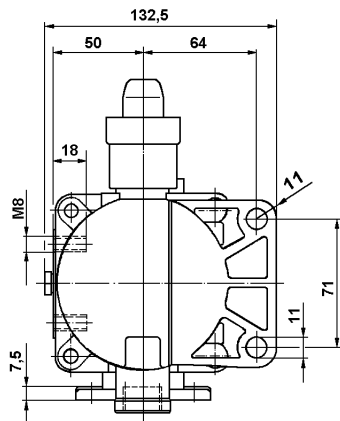
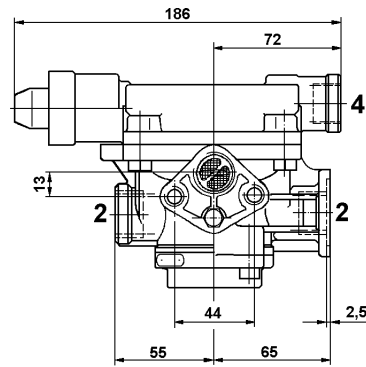
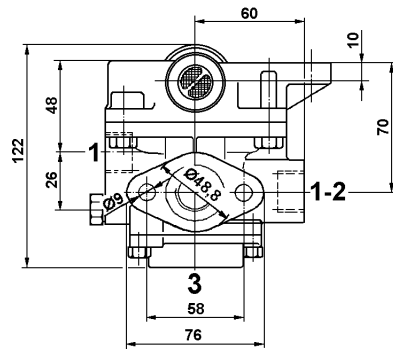
# Válvula relé de urgencia

## Relay Emergency Valve

**971 002**  
**Parte 1 / Part 1**

Instalación / Installation:

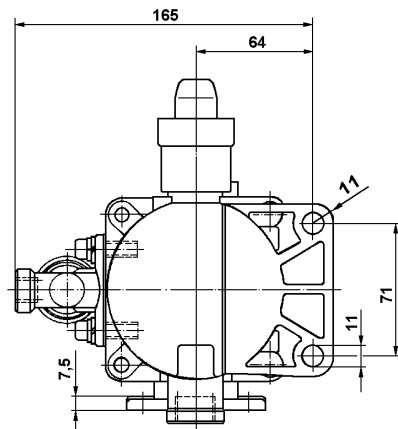
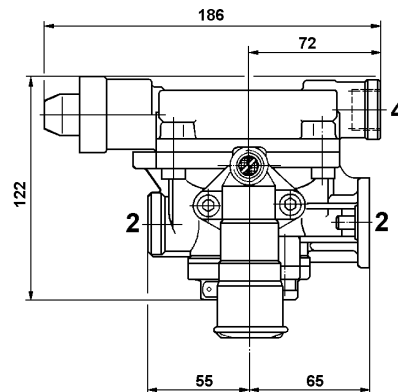
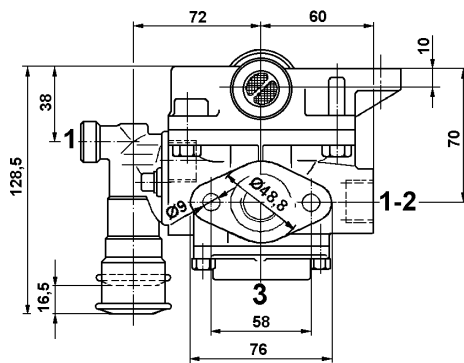
971 002 150 0 / 153 0



**Bocas / Ports:**

- 1-2 = M 22x1,5 Depósito/ Reservoir
- 1 = M 22x1,5 Entrada/ Energy supply
- 2 = M 22x1,5 Salida / Energy delivery
- 4 = M 22x1,5 Boca control/ Control port

971 002 531 0 / 532 0 / 533



**Bocas / Ports:**

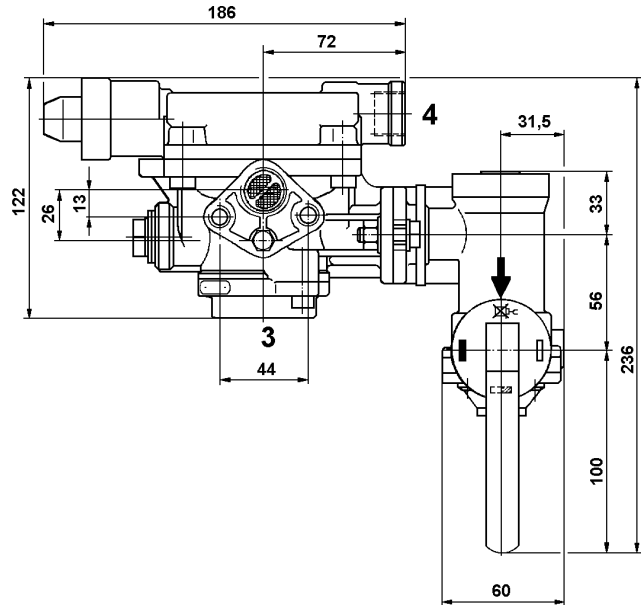
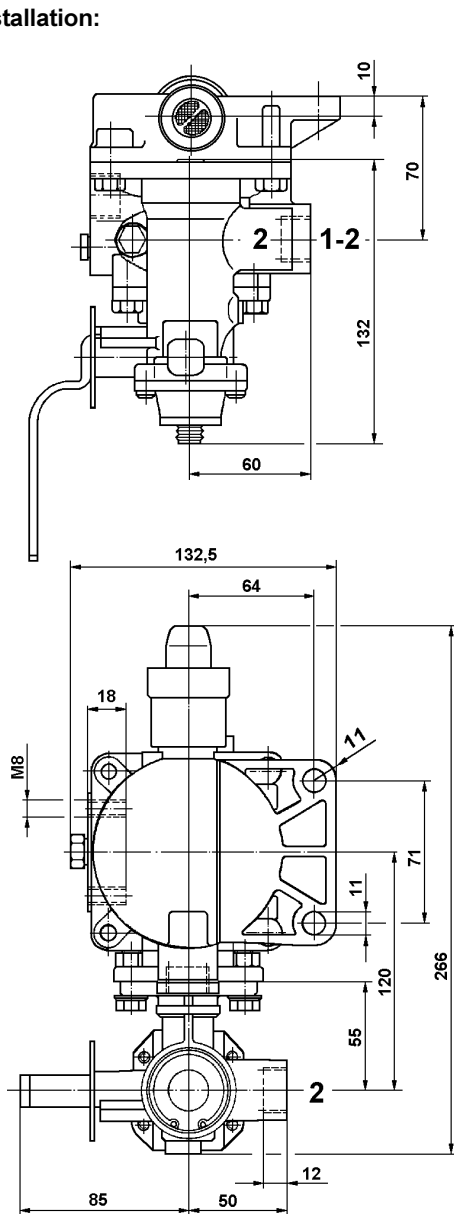
- 1-2 = M 22x1,5 Depósito/ Reservoir
- 1 = M 16x1,5 971 002 531 0  
 Entrada / Energy supply
- M 22x1,5 971 002 532 0  
 Salida/ Energy supply
- M 22x1,5 971 002 533 0  
 Entrada / Energy supply
- 2 = M 22x1,5 Salida/ Energy delivery
- 4 = M 22x1,5 Boca control / Control port

# Válvula relé de urgencia

## Relay Emergency Valve

**971 002**  
**Parte 1 / Part 1**

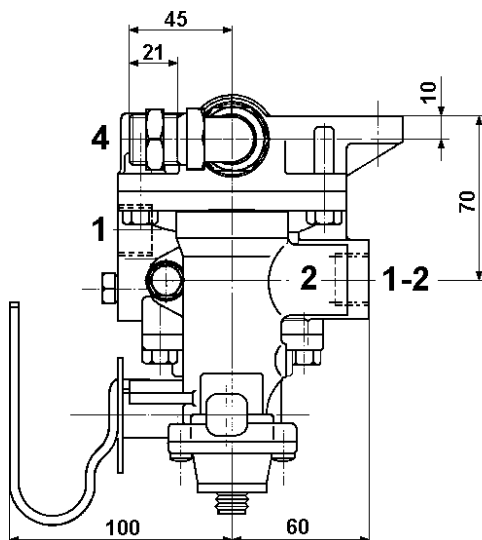
Instalación / Installation:  
 971 002 570 0



### Bocas / Ports:

- 1-2 = M 22x1,5 Depósito/ Reservoir
- 1 = M 22x1,5 Entrada/ Energy supply
- 2 = M 22x1,5 Salida/ Energy delivery
- 4 = M 22x1,5 Boca control/ Control port

971 002 580 0



como 971 002 570 0, pero con otra palanca y conexión en boca 4.  
 like 971 002 070 0, but with another lever and with connection at Port 4

### Anschlüsse / Ports:

- 1-2 = M 22x1,5 Depósito/ Reservoir
- 1 = M 22x1,5 Entrada/ Energy supply
- 2 = M 22x1,5 Salida/ Energy delivery
- 4 = M 22x1,5 Boca control/ Control port

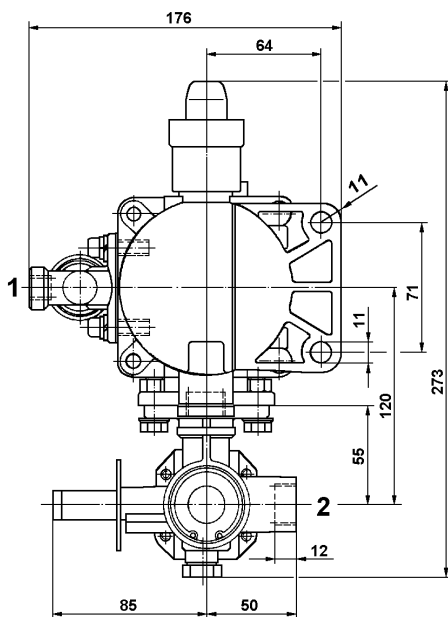
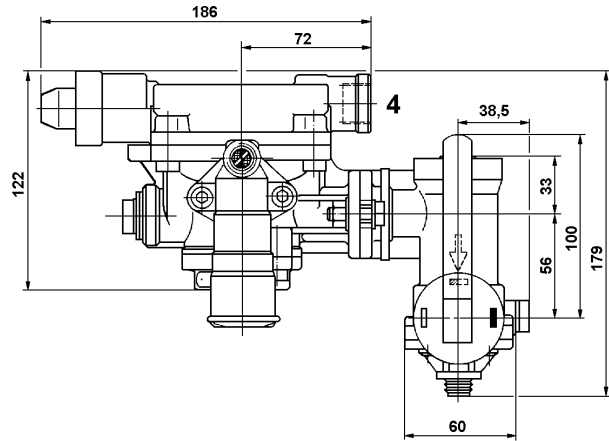
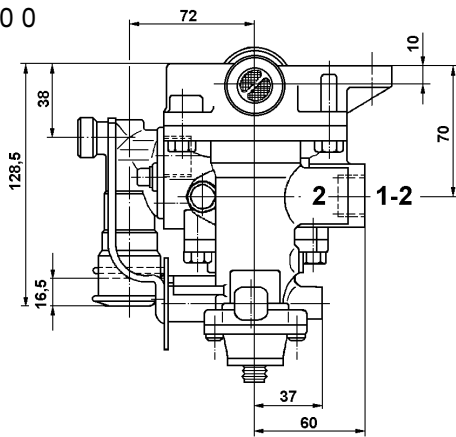
# Válvula relé de urgencia

## Relay Emergency Valve

971 002  
Parte 1 / Part 1

Instalación/ Installation:

971 002 620 0



### Bocas/ Ports:

- 1-2 = M 22x1,5 Depósito/ Reservoir
- 1 = M 16x1,5 Entrada/ Energy supply
- 2 = M 22x1,5 Salida/ Energy delivery
- 4 = M 22x1,5 Boca control/ Control port