

| Datos técnicos / Technical Data: | | |
|---|--|-------|
| Tipo | 27 / 30*) | |
| Presión de funcionamiento Operating Pressure | ver tabla see table | |
| Medio Permissible Medium | aire / air | |
| Rango de temperatura Operating temperature range | -40°C a/to +80°C | |
| Carrera total Overall stroke | Cámara de freno Brake chamber | 64 mm |
| | Actuador de freno Spring brake actuator | 64 mm |
| Oscilación del vástago Piston rod deflection | máximo 3° 3° max. all round | |
| Dimensión rosca/boca Thread of pipe connection | M16x1,5 | |

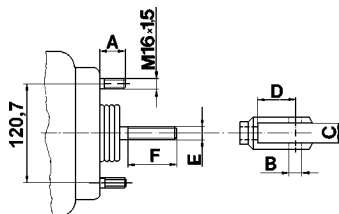
Propósito y requisitos para la instalación:
ver 925 320

Purpose and Installation Requirement:
See 925 320

*) Para desviaciones ver tabla
*) For deviations see table

Explicaciones / Explanations:

Dimensiones / Dimensions:

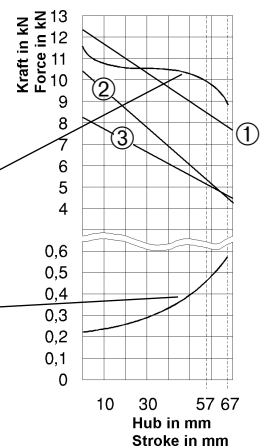


Característica / Characteristic:

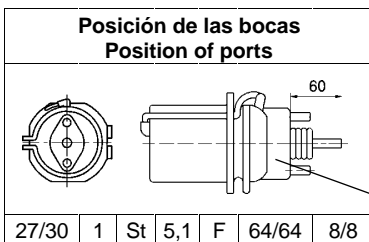
①-③= Fuerza de salida del freno de muelle
Output force of spring brake

Fuerza de salida del freno de servicio
Output force of service brake
a/at 6,5 bar

Fuerza del muelle de recuperación
del freno de servicio
Force of return spring of service
brake part



Posición de las bocas Position of ports



27/30 1 St 5,1 F 64/64 8/8

En la presente vista, los detalles pueden mostrarse fuera del plano.
Details can be shown out of plane at this view.

Presión de funcionamiento: cámara de freno / actuador de freno de muelle
Oper. pressure: Brake chamber / Spring brake actuator

Carrera: cámara de freno / Stroke: Brake chamber
Carrera: actuador de freno de muelle / Stroke: Spring brake actuator

Retén de la biela del pistón F = fuelle / gaiter
Seal of piston rod S = disco / disk
- = sin / without

Despresurización del freno de muelle a / Release pressure of spring brake at

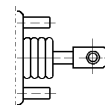
Material: freno de muelle (St= acero Al= aluminio)
Material: Spring brake part (St= steel Al= aluminium)

Característica / Characteristic

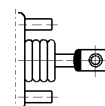
Tipo (cámara / actuador)
Type (brake chamber / spring brake actuator)

yugo / yoke

roscado
screwed on



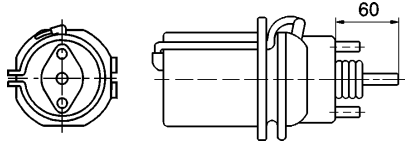
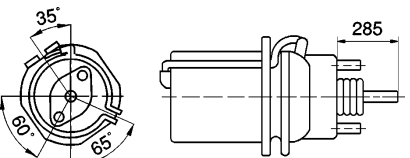
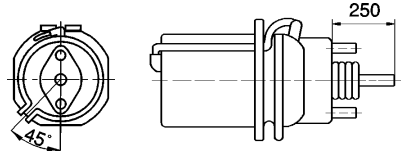
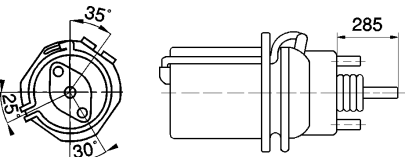
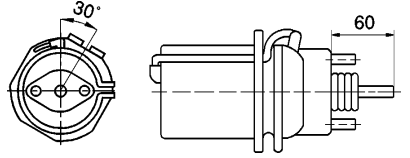
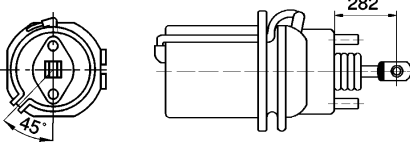
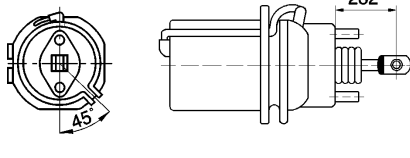
soldado
welded on

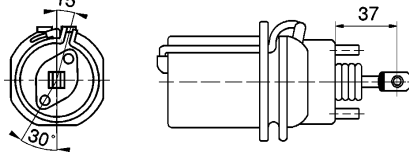
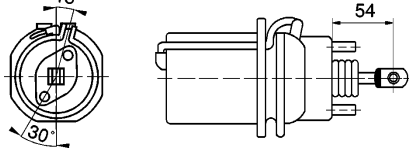
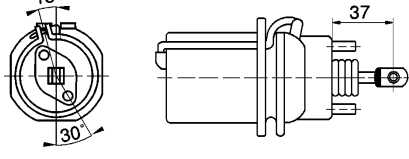
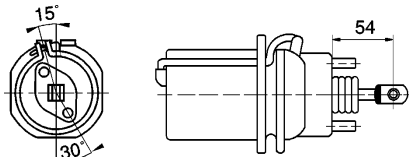


Actuador de freno Tristop®

Tristop® - Brake Actuator

925 329

| Referencia Part Number | Posición de las bocas Position of ports |
|---|--|
| 925 329 000 0 A= 45 B= - C= - D= - E= Ø 14x1,5 F= 45 |  27/30 1 St 5,1 F 64/64 10/8 |
| 925 329 001 0 A= 42 B= - C= - D= - E= M 14x1,5 F= 55 |  27/30 1 St 5,1 F 64/64 10/8 |
| 925 329 004 0 A= 45 B= - C= - D= - E= M 14x1,5 F= 45 |  27/30 1 St 5,1 F 64/64 10/8 |
| 925 329 011 0 A= 42 B= - C= - D= - E= M 14x1,5 F= 55 |  27/30 1 St 5,1 F 64/64 10/8 |
| 925 329 015 0 A= 45 B= - C= - D= - E= M 14x1,5 F= 45 |  27/30 1 St 5,1 F 64/64 10/8 |
| 925 329 022 0 A= 45 B= Ø 14 C= 14,2 D= 31,5 E= - F= - |  27/30 1 St 5,1 F 64/64 10/8 |
| 925 329 032 0 A= 45 B= Ø 14 C= 14,2 D= 31,5 E= - F= - |  27/30 1 St 5,1 F 64/64 10/8 |

| Referencia Part Number | Posición de las bocas Position of ports |
|---|---|
| 925 329 160 0 A= 33 B= Ø 14 C= 14,2 D= 20 E= - F= - |  27/24 2 Al 5,1 F 64/64 8/8 |
| 925 329 162 0 A= 33 B= Ø 14 C= 14,2 D= 31,5 E= - F= - |  27/24 2 Al 5,1 F 64/64 8/8 |
| 925 329 170 0 A= 33 B= Ø 14 C= 14,2 D= 20 E= - F= - |  27/24 2 Al 5,1 F 64/64 8/8 |
| 925 329 172 0 A= 33 B= Ø 14 C= 14,2 D= 31,5 E= - F= - |  27/24 2 Al 5,1 F 64/64 8/8 |
| | |
| | |
| | |
| | |
| | |