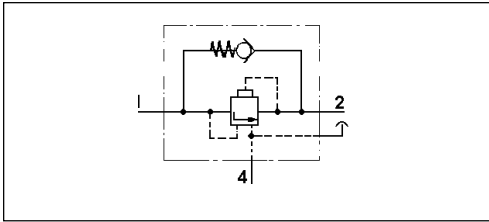


Válvula proporcional

Pressure Control Relay Valve

468 599



Propósito:

Control de la fuerza de frenado para los cilindros de freno hidráulicos del eje delantero, dependiendo de la presión desde la válvula en función de la carga.

Requisitos de instalación:

Se instala en posición horizontal, con el tornillo/respiradero apuntando hacia arriba. Se sujeta con dos tornillos M8.

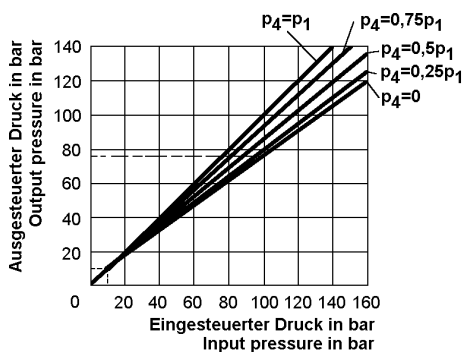
Purpose:

Control of the braking force for the hydraulic wheel brake cylinders on the front axle as a ratio of the output pressure from the load-sensing valve on the rear axle, and thus of the load on the vehicle.

Installation Requirement:

The pressure control relay valve is installed horizontally, with the evacuation screw pointing upwards. It is fastened with two screws M8.

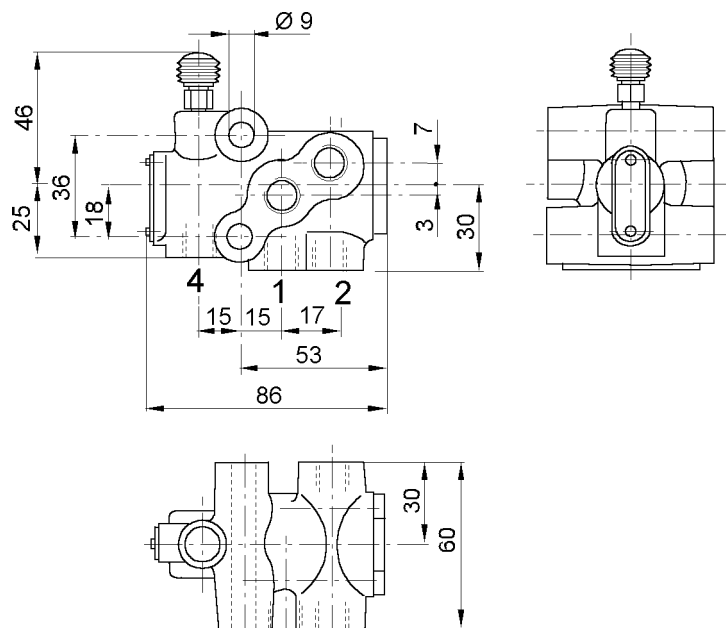
Característica / Characteristic:



Datos técnicos / Technical Data:

Referencia Part Number	468 599 000 0	
Rango de funcionamiento Operating pressure	max. 150 bar	
Medio Permissible medium	Líquido de frenos Brake fluid	
Rango de temperatura Operating temperature range	-40°C a/to +80°C	
Control volumen Control volume	Circuito eje tras. Rear axle circuit	0,2 cm ³
	Circuito eje del. Front axle circuit	0,2 cm ³
Volumen absorción con descarga Absorbed volume when releasing	Circuito eje del. 0,5 cm ³ Front axle circuit 0,5 cm ³	
Regulación Regulating ratio	1,33:1 (theor.)	

Instalación/ Installation:



Bocas / Ports:

- 1 = Entrada / Energy supply
- 2 = Salida / Energy delivery
- 4 = Boca control/ Control port

