

Válvula de freno

467 406

Brake Valve

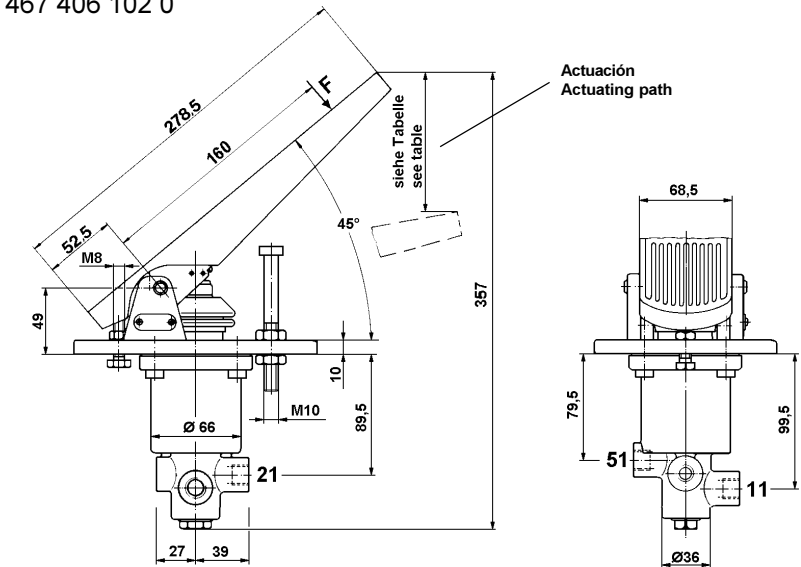
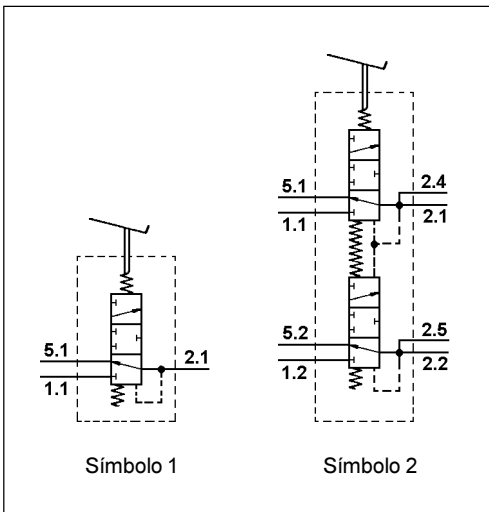


Datos técnicos / Technical Data:

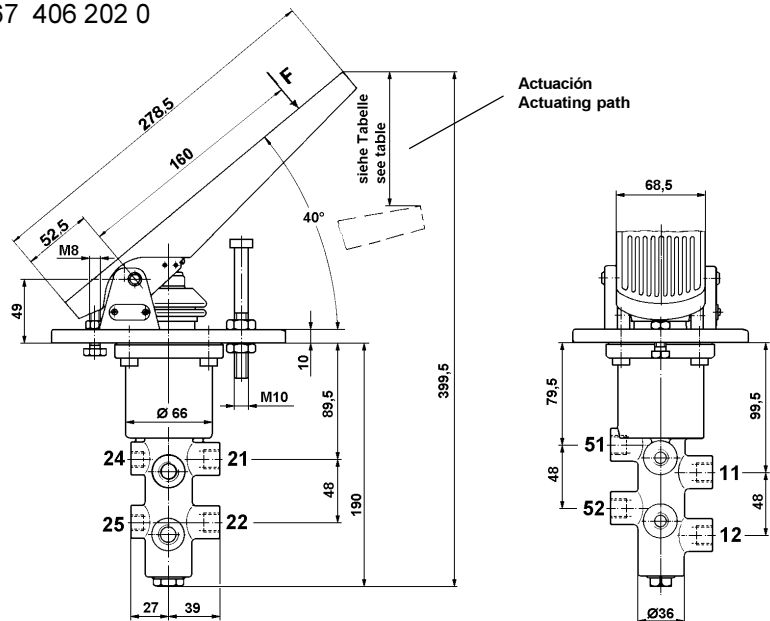
Rango de funcionamiento Operating Pressure	max. 150 bar
Medio Permissible medium	aceite mineral mineral oil
Rango de temperatura Operating temperature range	-30°C a/to +80°C

Instalación / Installation:

467 406 102 0



467 406 202 0



Propósito:

El propósito de la válvula de freno es el de controlar la presión para los cilindros de freno del sistema de freno de servicio, dependiendo de la cantidad de fuerza aplicada al pedal de freno.

Requisitos de instalación:

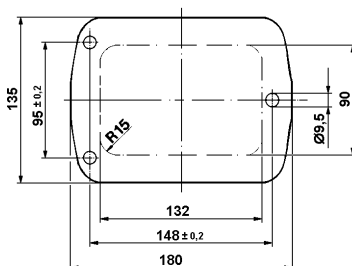
La válvula de freno con pedal debe instalarse en el suelo de la cabina de tal forma que aseguremos una posición confortable del tobillo a la hora de pisar el pedal. La válvula se fija con un soporte o base y 3 tornillos M8.

Purpose:

The purpose of the brake valve is the graded control of the pressure for the wheel brake cylinders of the service braking system depending on the amount of force applied to the brake pedal.

Installation Requirement:

The brake valve with pedal should be installed on the floor of the cab such that comfortable operation of the pedal is ensured using the ankle. The valve is fixed with carrier plate and 3 screws M8.



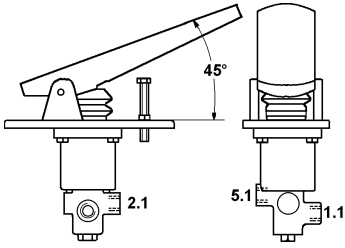
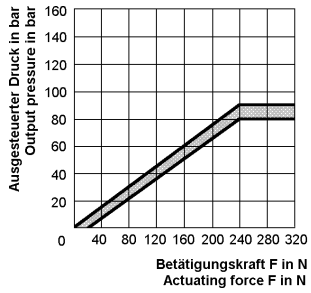
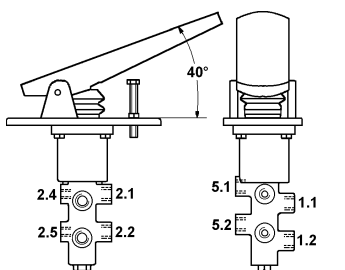
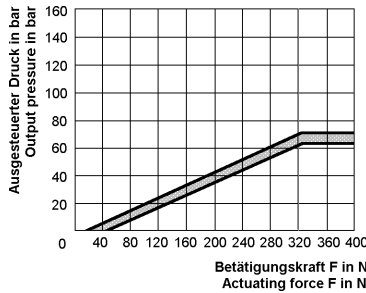
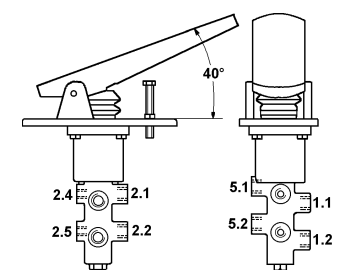
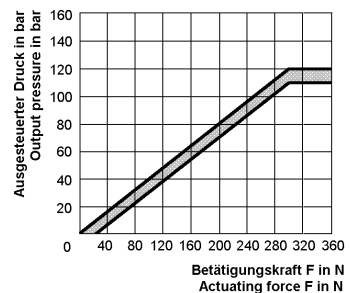
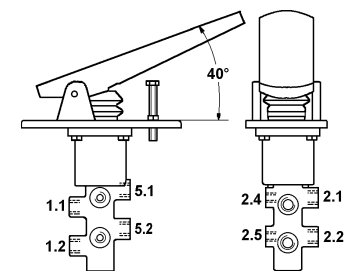
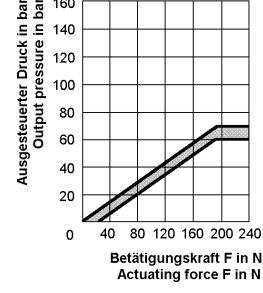
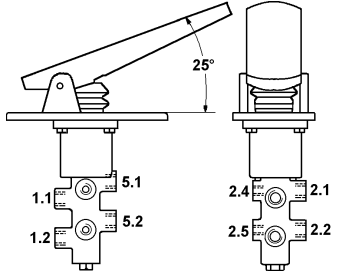
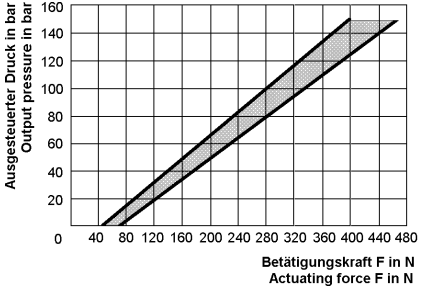
Bocas / Ports:

- 1.1; 1.2 = Acumulador hidráulico
Hydraulic accumulator
- 2.1; 2.2 = Freno servicio
Service brake
- 2.4; 2.5 = Conexión prueba
Test connection
- 5.1; 5.2 = Boca retorno
Return port

Válvula de freno

Brake Valve

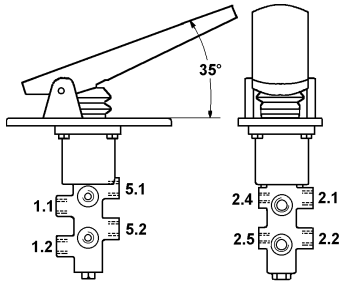
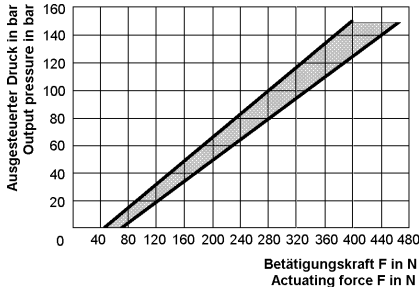
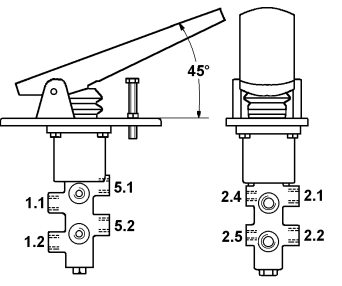
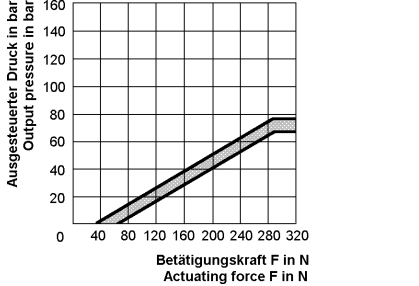
467 406

Referencia Part Number	Posición de las bocas Position of ports	Bocas Ports	Símbolo	Característica Characteristic
para sistema simple de freno / for single line braking system				
467 406 102 0	 <p>p51 = 5 bar</p>	1.1 = M 14x1,5 2.1 = M 14x1,5 5.1 = M 14x1,5	1	 <p>Actuación / Actuating path = 80 mm</p>
para sistema doble de freno / for dual line braking system				
467 406 202 0	 <p>p51, p52 = 5 bar</p>	1.1 = M 16x1,5 1.2 = M 16x1,5 2.1 = M 16x1,5 2.2 = M 16x1,5 2.4 = M 12x1,5 2.5 = M 12x1,5 5.1 = M 16x1,5 5.2 = M 16x1,5	2	 <p>Actuación / Actuating path = 103 mm</p>
467 406 216 0	 <p>p51, p52 = 5 bar</p>	1.1 = M 16x1,5 1.2 = M 16x1,5 2.1 = M 16x1,5 2.2 = M 16x1,5 2.4 = M 10x1,5 2.5 = M 10x1,5 5.1 = M 16x1,5 5.2 = M 16x1,5	2	 <p>Actuación / Actuating path = 103 mm</p>
467 406 219 0	 <p>p51, p52 = 5 bar</p>	1.1 = M 16x1,5 1.2 = M 16x1,5 2.1 = M 16x1,5 2.2 = M 16x1,5 2.4 = M 10x1,5 2.5 = M 10x1,5 5.1 = M 16x1,5 5.2 = M 16x1,5	2	 <p>Actuación / Actuating path = 79 mm</p>
467 406 233 0		1.1 = M 16x1,5 1.2 = M 16x1,5 2.1 = M 16x1,5 2.2 = M 16x1,5 2.4 = M 10x1,5 2.5 = M 10x1,5 5.1 = M 16x1,5 5.2 = M 16x1,5	2	 <p>Actuación / Actuating path = 128 mm</p>

Válvula de freno

467 406

Brake Valve

Referencia Part Number	Posición bocas Position of ports	Bocas Ports	Símbolo	Característica Characteristic
para sistema simple de freno / for dual line braking system				
467 406 234 0		1.1 = M 16x1,5 1.2 = M 16x1,5 2.1 = M 16x1,5 2.2 = M 16x1,5 2.4 = M 10x1,5 2.5 = M 10x1,5 5.1 = M 16x1,5 5.2 = M 16x1,5	2	 <p>Actuación / Actuating path = 128 mm</p>
467 406 401 0	 <p>p51, p52 = 5 bar</p>	1.1 = M 16x1,5 1.2 = M 16x1,5 2.1 = M 16x1,5 2.2 = M 16x1,5 2.4 = M 12x1,5 2.5 = M 12x1,5 5.1 = M 16x1,5 5.2 = M 16x1,5	2	 <p>Actuación / Actuating path = 49 mm</p>

3