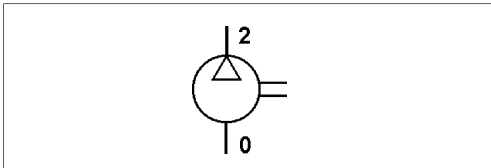
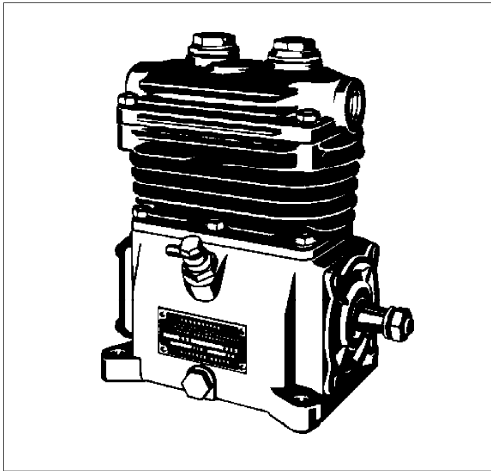


Compresor de aire bicilíndrico

Twin Cylinder Air Compressor

411 503

1



Datos Técnicos / Technical Data:

Tipo	NDR
Cilindro Bore	2 x Ø 60 mm
Carrera Stroke	34 mm
Cilindrada Swept volume	192 cm ³
Presión de funcionamiento Operating pressure	max. 8 bar
Refrigeración Cooling	Aire air
Velocidad normal Normal speed	2800 r.p.m.
tipo de lubricación Type of lubrication	UD
Peso Weight	9,4 kg

Propósito:

Generar aire comprimido en los vehículos.

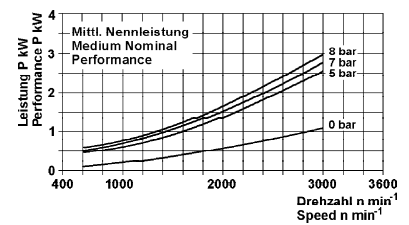
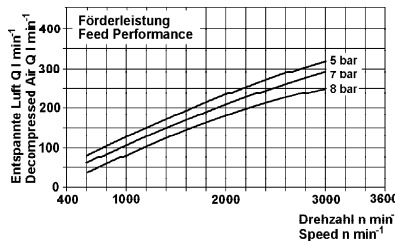
Requisitos para la instalación
ver folleto 826 001 099 3

Purpose:

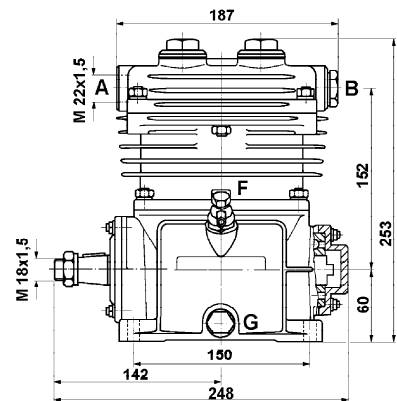
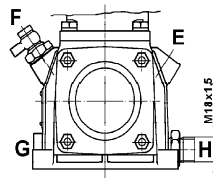
To generate compressed air in vehicles.

Installation Requirement:

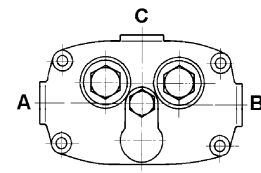
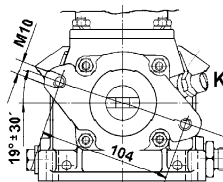
see brochure 826 001 099 3



Instalación / Installation:



Brida Vickers / Vickers flange



Referencia Part Number	Brida Flange	Bocas / Ports								Comentarios Comments
		A	B	C	E	F	G	H	K	
411 503 717 0	-	0	2*	2	-	-	82*	82	81	
411 503 741 0	Vickers	0	2	2*	-	-	82*	82	81	

* cerrado con tapón / closed with plug