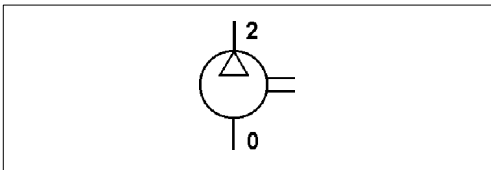
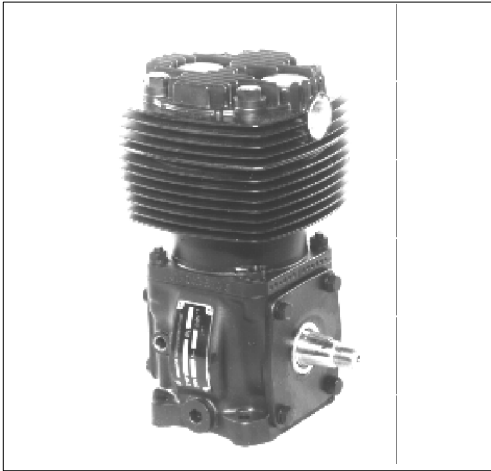


Compresor de aire monocilíndrico

Single Cylinder Air Compressor

411 042

1

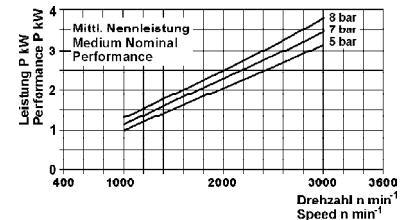
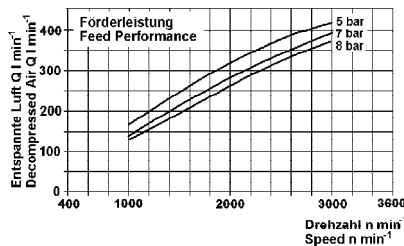


Datos Técnicos / Technical Data:

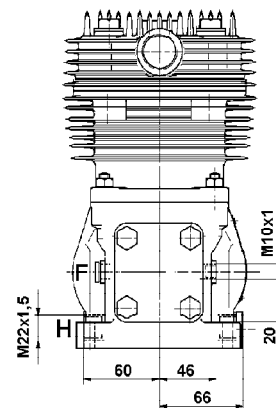
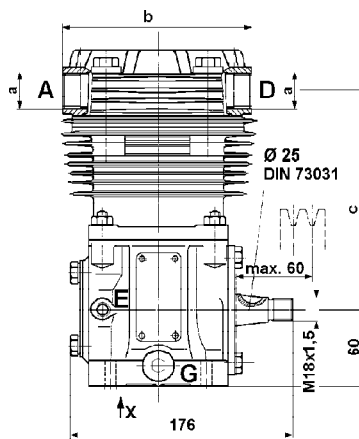
Tipo	NDR
Cilindro Bore	Ø 90 mm
Carrera Stroke	36 mm
Cilindrada Swept volume	229 cm ³
Presión de funcionamiento Operating pressure	max. 8 bar
Refrigeración Cooling	Aire air
Velocidad normal Normal speed	max. 3000 r.p.m.
Tipo de lubricación Type of lubrication	UD
Peso Weight	11,5 kg

Propósito:
Generar aire comprimido en los vehículos.
Requisitos para la instalación:
ver folleto 826 001 099 3

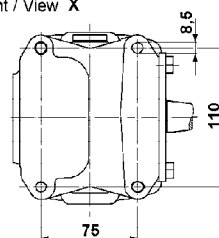
Purpose:
To generate compressed air in vehicles.
Installation Requirement:
see brochure 826 001 099 3



Instalación / Installation:



Ansicht / View X



Referencia Part Number	Bocas / Ports								Medidas / Dimensions			Comentarios Comments
	A	B	C	D	E	F	G	H	a	b	c	
411 042 501 0	0	-	-	2	81	81*	82*	82	M 26x1,5	150	173	sustituida por / replaced by 411 142 805 0

* cerrado con tapón / closed with plug