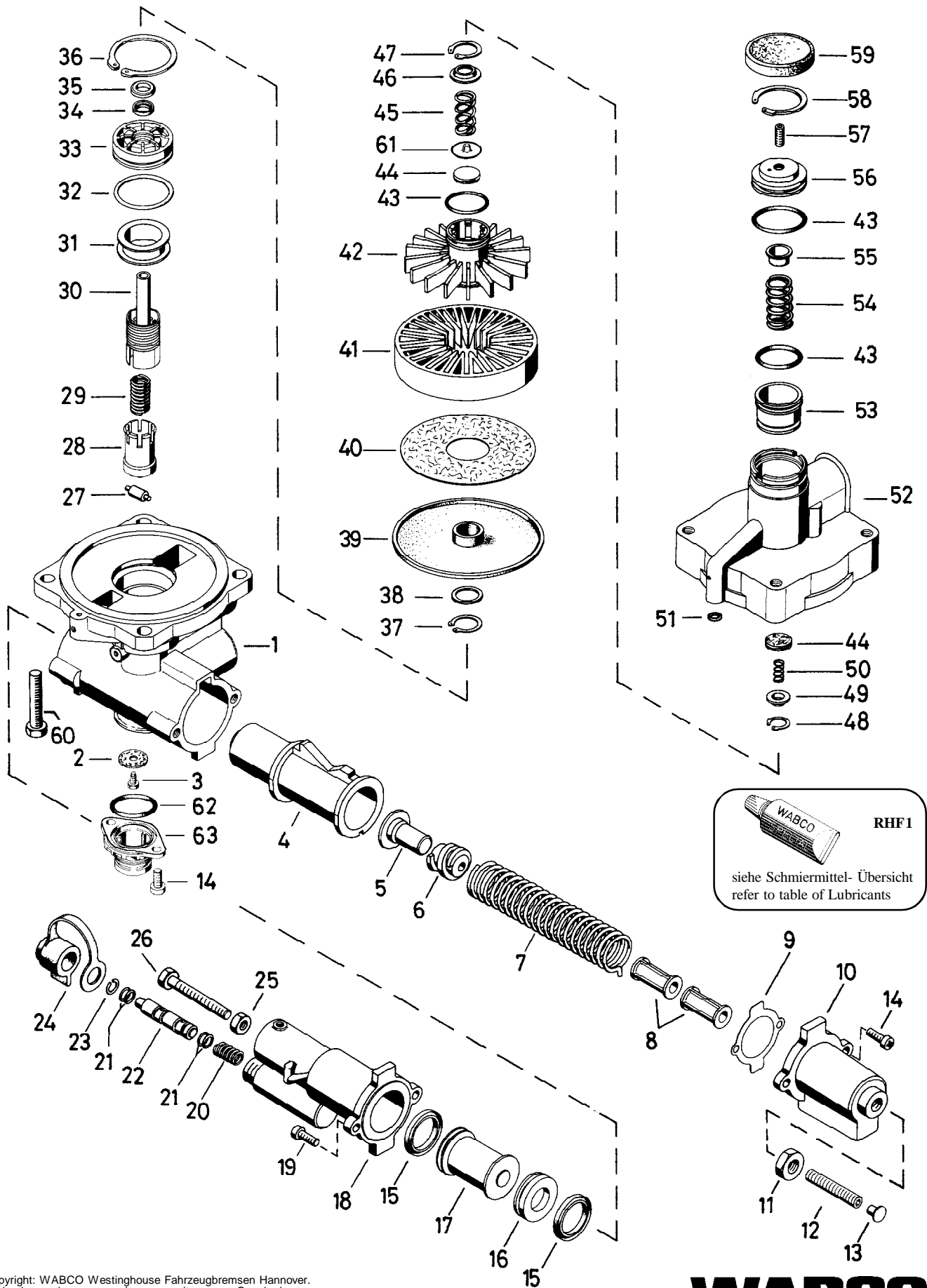


# Automatischer Bremskraftregler

Automatic proportioning valve

475 714



© Copyright: WABCO Westinghouse Fahrzeugbremsen Hannover.  
 Nachdruck - auch auszugsweise - nur mit unserer Genehmigung.  
 © copyright: WABCO Westinghouse Fahrzeugbremsen Hannover.  
 No part of this publication may be reproduced without our prior permission.

L 27

**WABCO**

475 714 910 3

Ausgabe 08.92

H5 714 10 A

# Automatischer Bremskraftregler

# 475 714

Automatic load proportioning valve

a Zu verwenden nach Bedarf.  
a to be used as required as occasion demands.  
(...) Teil nicht gezeichnet.  
(...) Part not shown.

Teil ist nicht im Rep.-Satz enthalten.  
Es ist gesondert zu bestellen.  
... This part is not included in the repair kit  
and is to be ordered separately.

At repairs these parts should be replaced  
Hierzu siehe Ersatzteilblatt unter dieser Geräteummer.  
... See spare parts list with this part number.

| Benennung<br>name of part                 | Position<br>ref. no. | Bestellnummer<br>part number | für alle Abwandlgn.<br>for all variations | Stückzahl je Abwandlung<br>quantity per variation |     |     |     |     | Reparaturatz<br>repair kit |
|---|----------------------|------------------------------|---|---|-----|-----|-----|-----|----------------------------|
|   |                      |                              |   | 500   | 501 | 502 | 503 | 504 |                            |
| AUTOMATISCHER<br>BREMSKRAFTREGLER         |                      | 475 714 ... 0                |   |   |     |     |     |     |                            |
| Reparaturatz                              |                      | 475 714 000 2                |   | x   | x   | x   | x   | x   | 000                        |
| Gehäuseunterteil, vollst.                 | 1 ... 3              | -                            |   | 1   | 1   |     |     |     |                            |
| Gehäuseunterteil, vollst.                 | 1 + 3                | -                            |   |   |     | 1   |     |     |                            |
| Gehäuseunterteil, vollst.                 | 1 + 3                | -                            |   |   |     |     | 1   | 1   |                            |
| Ventilscheibe                             | 2*                   | 897 017 960 4                |   | 1   | 1   | 1   |     |     | 1                          |
| Zapfenschraube M5 x 10                    | 3                    | -                            | 1   |   |     |     |     |     |                            |
| Steuerkurve                               | 4                    | 475 711 080 4                | 1   |   |     |     |     |     |                            |
| Kappe                                     | 5                    | -                            | 1   |   |     |     |     |     |                            |
| Federklemmstück                           | 6                    | 895 370 370 4                | 1   |   |     |     |     |     |                            |
| Druckfeder, Drahtstärke 3,2mm             | 7                    | 896 512 370 4                |   | 1   | 1   |     | 1   | 1   |                            |
| Druckfeder, Drahtst. 4,0mm, 159 mm lg.    | 7                    | 896 512 360 4                |   |   |     | 1   |     |     |                            |
| Rohr                                      | 8                    | -                            | a   |   |     |     |     |     |                            |
| Dichtung                                  | 9                    | 475 711 140 4                | 1   |   |     |     |     |     | 1                          |
| Deckel                                    | 10                   | -                            | 1   |   |     |     |     |     |                            |
| Sechskantmutter BM12<br>DIN 439-04-Zn     | 11                   | -                            | 1   |   |     |     |     |     |                            |
| Hohlschraube M12                          | 12                   | 891 300 881 4                | 1   |   |     |     |     |     |                            |
| Schutzkappe                               | 13*                  | 898 012 159 4                | 1   |   |     |     |     |     | 1                          |
| Zylinderschraube M6x14                    | 14                   | -                            |   | 2   | 2   | 2   | 4   | 4   |                            |
| Kolbendichtring                           | 15*                  | 897 095 020 4                | 2   |   |     |     |     |     | 2                          |
| Kolben                                    | 16                   | -                            | 1   |   |     |     |     |     |                            |
| Kolben                                    | 17                   | 475 714 622 3                | 1   |   |     |     |     |     |                            |
| Zylinder                                  | 18                   | -                            |   | 1   | 1   |     | 1   | 1   |                            |
| Zylinder                                  | 18                   | -                            |   |   |     | 1   |     |     |                            |
| Linsenschraube M6x14<br>DIN 7985-4.8-Zn   | 19                   | -                            | 2   |   |     |     |     |     |                            |
| Druckfeder                                | 20                   | -                            | 1   |   |     |     |     |     |                            |
| O-Ring 5,3 x 2,4                          | 21*                  | 897 080 808 4                | 4   |   |     |     |     |     | 4                          |
| Schieber                                  | 22                   | 475 711 801 4                | 1   |   |     |     |     |     |                            |
| Sprengtring B10 DIN 7993-Zn               | 23*                  | -                            | 1   |   |     |     |     |     | 1                          |
| Schutzkappe                               | 24                   | 897 753 940 4                | 1   |   |     |     |     |     |                            |
| Mutter M6                                 | 25                   | 891 581 000 4                |   | 1   | 1   |     | 1   | 1   |                            |
| Sechskantschraube M6x50<br>DIN 933-8.8-Zn | 26                   | -                            |   | 1   | 1   |     | 1   | 1   |                            |
| Rolle                                     | 27                   | 475 710 130 4                | 1   |   |     |     |     |     |                            |
| Halter                                    | 28                   | 475 714 350 4                | 1   |   |     |     |     |     |                            |
| Druckfeder                                | 29                   | 896 516 293 4                | 1   |   |     |     |     |     |                            |
| Stößel                                    | 30                   | 475 714 770 4                | 1   |   |     |     |     |     |                            |
| Dichtung                                  | 31*                  | 897 551 586 4                | 1   |   |     |     |     |     | 1                          |
| O-Ring 34,59 x 2,62                       | 32*                  | 897 086 400 4                | 1   |   |     |     |     |     | 1                          |
| Führung                                   | 33                   | -                            | 1   |   |     |     |     |     |                            |
| Nutring                                   | 34*                  | 897 162 030 4                | 1   |   |     |     |     |     | 1                          |
| Ring                                      | 35                   | -                            | 1   |   |     |     |     |     |                            |
| Sicherungsring 42x1,75 DIN 472            | 36                   | -                            | 1   |   |     |     |     |     |                            |
| Sicherungsring 17x1 DIN 471               | 37                   | -                            | 1   |   |     |     |     |     | 1                          |
| Ring                                      | 38                   | -                            | 1   |   |     |     |     |     |                            |
| Membran                                   | 39*                  | 897 121 570 4                | 1   |   |     |     |     |     | 1                          |
| Scheibe                                   | 40*                  | 897 045 510 4                | 1   |   |     |     |     |     | 1                          |

Anderungen bleiben vorbehalten  
The right of amendment is reserved

## L28

# WABCO

475 714 910 3 Ausgabe 08.92

# Automatischer Bremskraftregler

# 475 714

Automatic load proportioning valve

| Benennung<br>name of part                 | Position<br>ref. no. | Bestellnummer<br>part number | für alle Abwandlgn.<br>for all variations | Stückzahl je Abwandlung<br>quantity per variation |     |     |     |     |  | Reparaturatz<br>repair kit |
|---|----------------------|------------------------------|---|---|-----|-----|-----|-----|--|----------------------------|
|   |                      |                              |   | 500   | 501 | 502 | 503 | 504 |  |                            |
| AUTOMATISCHER<br>BREMSKRAFTREGLER         |                      | 475 714 ... 0                |   |   |     |     |     |     |  |                            |
| <b>Reparaturatz</b>                       |                      | 475 714 000 2                |   | x   | x   | x   | x   | x   |  | 000                        |
| Einlegering                               | 41                   | 475 710 260 4                | 1   |   |     |     |     |     |  |                            |
| Kolben                                    | 42                   | 745 713 620 4                | 1   |   |     |     |     |     |  |                            |
| O-Ring 27,3 x 2,4                         | 43*                  | 897 080 370 4                | 3   |   |     |     |     |     |  | 3                          |
| Ventil                                    | 44*                  | 899 505 830 4                | 2   |   |     |     |     |     |  | 2                          |
| Druckfeder                                | 45                   | -                            |   | 1   | 1   | 1   |     |     |  | 1                          |
| Druckfeder                                | 45                   | -                            |   |   |     |     | 1   | 1   |  |                            |
| Kappe                                     | 46                   | 475 710 042 4                | 1   |   |     |     |     |     |  | 1                          |
| Sicherungsring 20x1 DIN 472               | 47                   | -                            | 1   |   |     |     |     |     |  | 1                          |
| Sicherungsring J17x1V                     | 48                   | -                            | 1   |   |     |     |     |     |  | 1                          |
| Kappe                                     | 49                   | 895 071 790 4                | 1   |   |     |     |     |     |  |                            |
| Druckfeder                                | 50                   | -                            | 1   |   |     |     |     |     |  | 1                          |
| O-Ring 3,3x2,4                            | 51*                  | 897 080 250 4                | 1   |   |     |     |     |     |  | 1                          |
| Gehäuseoberteil                           | 52                   | -                            |   | 1   | 1   |     | 1   | 1   |  |                            |
| Gehäuseunterteil                          | 52                   | -                            |   |   |     | 1   |     |     |  |                            |
| Kolben                                    | 53                   | 475 710 625 4                | 1   |   |     |     |     |     |  |                            |
| Druckfeder                                | 54                   | 869 515 510 4                | 1   |   |     |     |     |     |  |                            |
| Kappe                                     | 55                   | -                            | 1   |   |     |     |     |     |  |                            |
| Kolben                                    | 56                   | -                            | 1   |   |     |     |     |     |  |                            |
| Gewindestift M5x12 DIN 914-45H-Zn         | 57                   | -                            | 1   |   |     |     |     |     |  |                            |
| Sicherungsring J33x1,2V                   | 58                   | 895 222 450 4                | 1   |   |     |     |     |     |  |                            |
| Schutzkappe                               | 59                   | 898 011 350 4                | 1   |   |     |     |     |     |  |                            |
| Sechskantschraube M8x55<br>DIN 933-8.8-Zn | 60                   | -                            | 4   |   |     |     |     |     |  |                            |
| Kappe                                     | 61                   | 475 710 043 3                | 1   |   |     |     |     |     |  |                            |
| O-Ring 27,3x2,4                           | 62*                  | 897 080 370 4                |   |   |     |     | 1   | 1   |  | 1                          |
| Entlüftungsstück                          | 63                   | 973 002 222 2                |   |   |     |     | 1   | 1   |  |                            |
| <b>Umbausatz</b>                          | 7 + 8                | 475 714 530 2                |   | 1   |     |     |     |     |  |                            |
| <b>Umbausatz</b>                          | 7 + 8                | 475 714 531 4                |   |   |     | 1   |     |     |  |                            |
| Druckfeder, Drahtst. 4mm, 159mm lg        | 7                    | 896 512 360 4                |   | 1   |     |     |     |     |  |                            |
| Druckfeder, Drahtst. 3,2mm                | 7                    | 896 512 370 4                |   |   |     | 1   |     |     |  |                            |
| Rohr                                      | 8                    | 893 981 741 4                |   | 1   |     | 1   |     |     |  |                            |