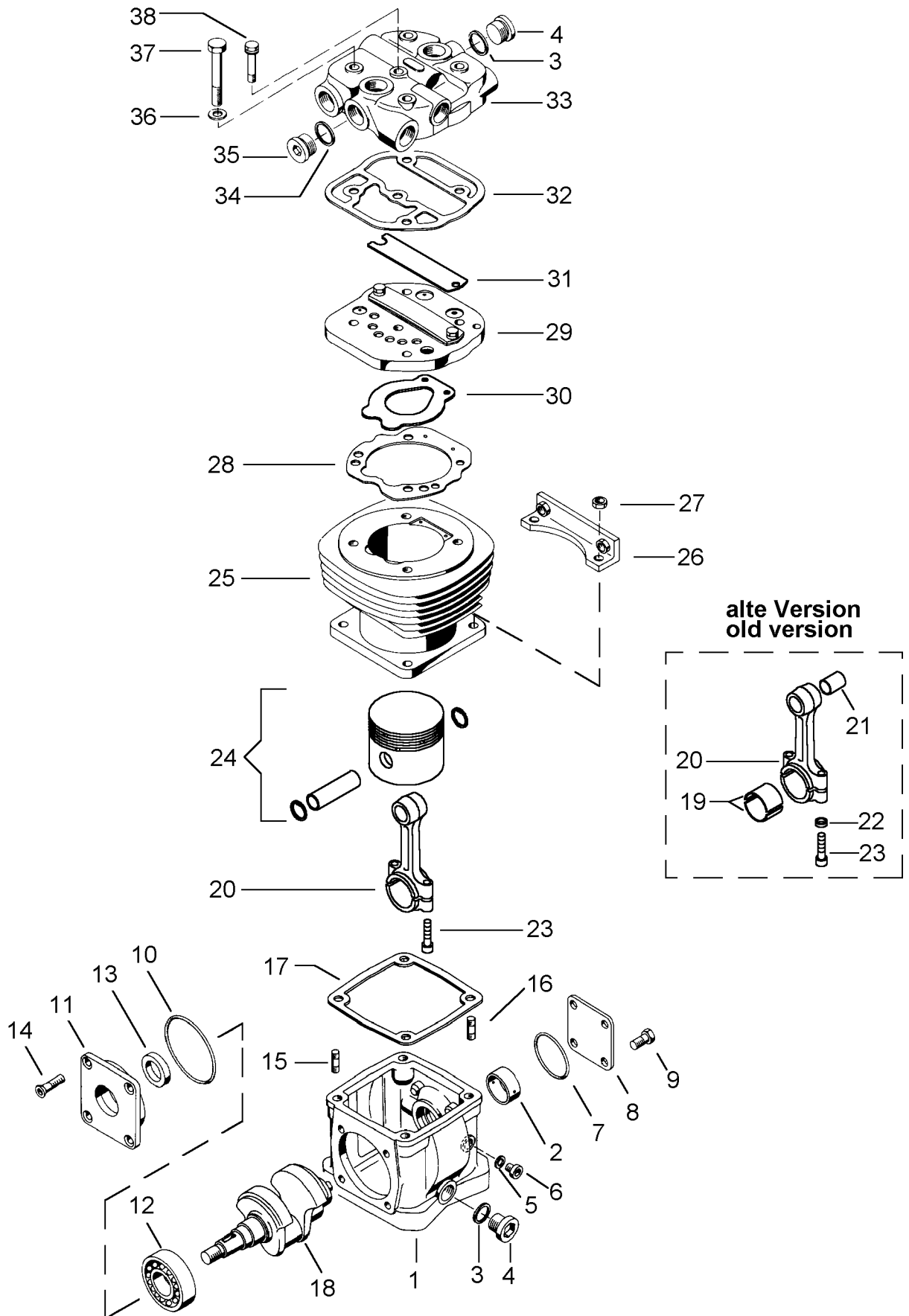


Einzylinder-Kompressor

411 072

Single cylinder air compressor



Einzyylinder-Kompressor

411 072

Single cylinder air compressor

a Zu verwenden nach Bedarf
a to be used as required as occasion demands.
(...) Teil nicht gezeichnet.
(...) Part not shown.

*** Teil ist nicht im Rep.-Satz enthalten.
*** Es ist gesondert zu bestellen.
*** This parts is not included in the repair kit
*** and is to be ordered separately.

* Bei Reparaturen sollten diese Teile ersetzt werden.
* At repairs these parts should be replaced.
* Hierzu siehe Ersatzteilblatt unter dieser Gerätemummer.
* See spare parts list with this part number.

| Benennung name of part | Position ref. no. | Bestellnummer part number | für alle Abwandlung- for all variation | Stückzahl je Abwandlung quantity per variation | | | | | Reparaturatz repair kit |
|------------------------------|----------------------|------------------------------|---|---|--|--|--|--|----------------------------|
| | | | | 681 | | | | | |
| EINZYLINDER-KOMPRESSOR | | 411 072 . . . 0 | | 681 | | | | | |
| Reparaturatz | | 411 072 001 2 | | x | | | | | 001 |
| Kurbelgehäuse, vollst. | 1 + 2 | - | | 1 | | | | | |
| Lager | 2 | 411 042 340 4 | | 1 | | | | | |
| Dichtring A22 x 27 | 3* | - | | 2 | | | | | 2 |
| Verschlußschraube | 4 | - | | 2 | | | | | |
| | | DIN 908-Zn | | | | | | | |
| Dichtring A10 x 14 | 5* | - | | 1 | | | | | 1 |
| Verschlußschraube | 6 | - | | 1 | | | | | |
| | | DIN 908-Zn | | | | | | | |
| O-Ring 57,0 x 3,0 | 7* | 897 670 900 4 | | 1 | | | | | 1 |
| Deckel | 8 | 411 012 661 4 | | 1 | | | | | |
| Sechskantschraube | 9 | - | | 4 | | | | | |
| | | DIN 933-8.8-Zn | | | | | | | |
| O-Ring 88,0 x 3,0 | 10* | 897 670 190 4 | | 1 | | | | | 1 |
| Lagerdeckel | 11 | - | | 1 | | | | | |
| Zylinderrollenlager | 12 | 895 270 611 4 | | 1 | | | | | |
| Radialdichtring A28 x 40 x 7 | 13* | 811 408 040 4 | | 1 | | | | | 1 |
| Senkschraube | 14 | - | | 4 | | | | | |
| | | DIN 7991-Zn | | | | | | | |
| Stiftschraube | 15 | - | | 2 | | | | | |
| | | DIN 939-8.8-Zn | | | | | | | |
| Stiftschraube | 16 | - | | 2 | | | | | |
| | | DIN 939-8.8-Zn | | | | | | | |
| Dichtung | 17* | 897 317 015 4 | | 1 | | | | | 1 |
| Kurbelwelle | 18 | - | | 1 | | | | | |
| Pleuellager | 19 | 411 062 340 4 | | 2 | | | | | |
| Pleuelstange, vollst. | 20 . . 23 | 411 042 732 2 | | 1 | | | | | |
| Lagerbuchse | 21 | - | | 1 | | | | | |
| Sicherungsscheibe 8 | 22* | - | | 2 | | | | | 2 |
| Sechskantschraube | 23 | - | | 2 | | | | | |
| | | DIN 933-8.8-Zn | | | | | | | |
| Kolben Ø 89,89 | 24 | 411 072 620 2 | | 1 | | | | | |
| Zylinder Ø 90,00 | 25 | - | | 1 | | | | | |
| Halter | 26 | - | | 1 | | | | | |
| Sechskantmutter | 27 | - | | 4 | | | | | |
| | | DIN 934-8-Zn | | | | | | | |
| Dichtung | 28* | 897 316 997 2 | | 1 | | | | | 1 |
| Lamellenventil, vollst. | 29 . . 31 | 411 033 504 2 | | 1 | | | | | |
| Sauglamelle | 30 | 411 033 052 4 | | 1 | | | | | |
| Drucklamelle | 31 | 411 034 050 4 | | 1 | | | | | |
| Dichtung | 32* | 897 317 013 4 | | 1 | | | | | 1 |
| Zylinderdeckel | 33 | - | | 1 | | | | | |
| Dichtring A26 x 32 | 34* | - | | 3 | | | | | 3 |
| Verschlußschraube | 35 | - | | 3 | | | | | |
| | | DIN 908-Zn | | | | | | | |
| Scheibe | 36 | - | | 4 | | | | | |
| Sechskantschraube | 37 | - | | 4 | | | | | |
| | | DIN 931-8.8-Zn | | | | | | | |
| Schraube | 38 | - | | 1 | | | | | |