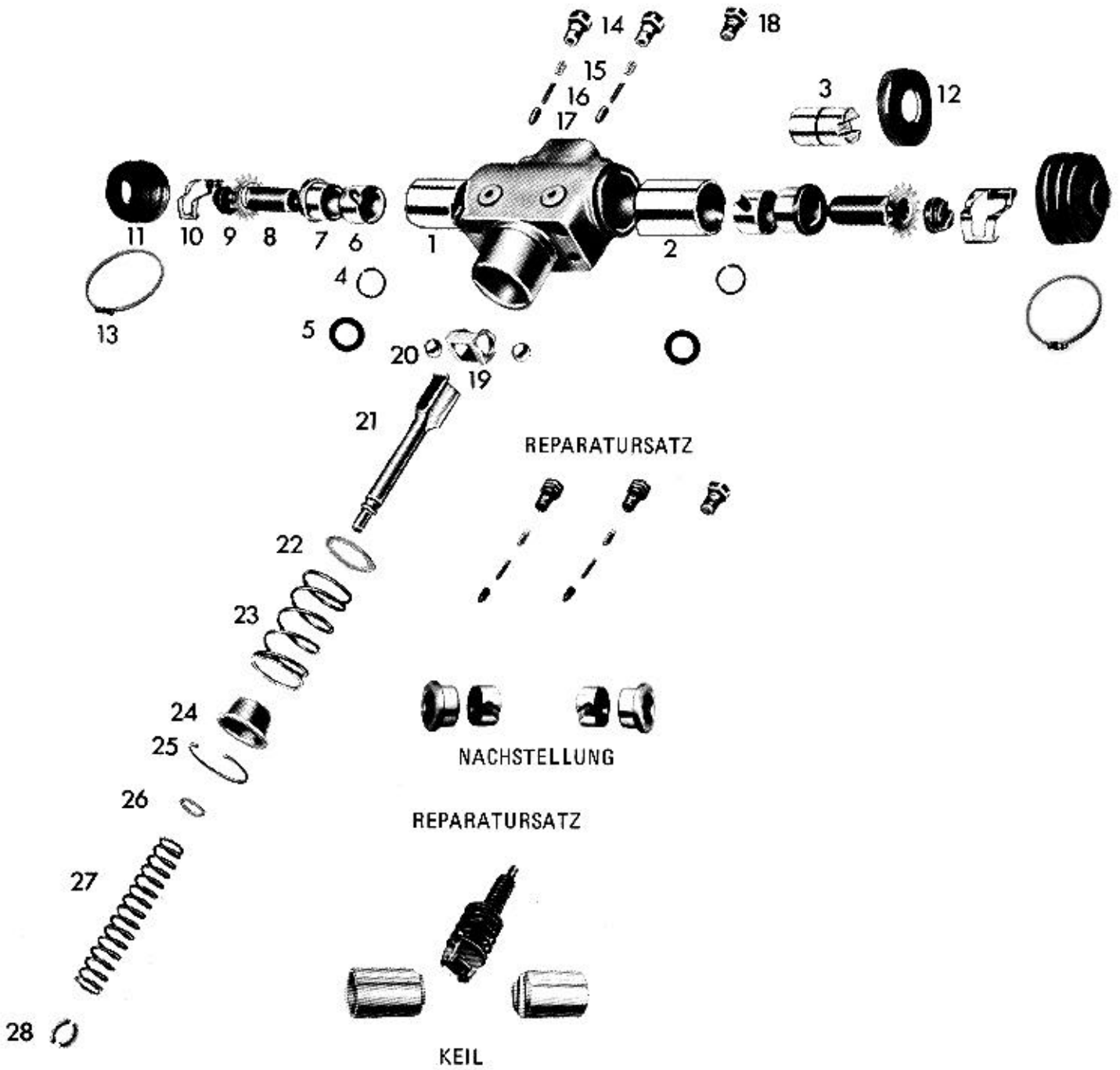


WABCO



Ersatzteilliste/Spare parts list/Liste pièces de rechange
Bildtafel/Picture/Planche
Ersatz für/Replacement for/Rechange

Nr. 12 739 033
B 300
Nr. Ausgabe vom 07. 04. 1988

WABCO

Bremsen-/Brake-/Frein-Type Spreizvorrichtung (Duo-Duplex) **Datum/date** 18. 02. 1993

| Pos. Nr. | Benennung | Nummer Number Nr. Repère | Stück/Bremse Qty./Brake Nbr. de pièce par frein | Designation | Désignation | Bemerkung Comment Observation |
|----------|------------------------------------|--------------------------|-------------------------------------------------|---------------------------------|-------------------------------------------|-------------------------------|
| | Spreizvorrichtung | 12 739 033 | | expander unit | dispositif d'écartement | |
| 3 | Druckstück | 13 229 094 | 1 | cross strut | poussoir | |
| 4 | Biegefeder | 13 303 022 | 1 | spiral spring | ressort en V | |
| 5 | Scheibe | 13 729 182 | 1 | washer | rondelle | |
| 8 | Schraube | 13 730 157 | 1 | screw | vis | |
| 9 | Druckstück | 13 229 102 | 1 | cross strut | poussoir | |
| 10 | Blattfeder | 13 304 022 | 1 | leaf spring | ressort à lame | |
| 18 | Schraube | 13 730 108 | 1 | screw | vis | |
| 25 | Sicherungsring | 18 458 030 | 1 | lock ring | bague de blocage | 43 x 1,75 DIN 472 |
| | Kontermutter für Druckluftzylinder | 13 551 048 | 1 | counter nut for air cylinder | contre-écrou pour cylindre à air comprimé | |
| | Reparatursatz Keil | 12 999 034 | 1 | repair set of wedge | pochette de rép. de la clavette | |
| 1 | Kolben | | 1 | piston | piston | |
| 2 | Kolben | | 1 | piston | piston | |
| 19 | Käfig | | 1 | cage | cage | |
| 20 | Kugel | | 2 | ball | bille | |
| | Keil komplett | | 1 | wedge complete | clavette complete | |
| 21 | Keil | | 1 | wedge | clavette | |
| 22 | Scheibe | | 1 | washer | rondelle | |
| 23 | Druckfeder | | 1 | pressure spring | ressort de compression | |
| 24 | Federteller | | 1 | spring plate | cuvette de ressort | |
| 26 | Scheibe | | 1 | washer | rondelle | |
| 27 | Druckfeder | | 1 | pressure spring | ressort de compression | |
| 28 | Ringhälfte | | 2 | half of ring | demi-bague | |
| | Reparatursatz Nachstellung | 12 999 090 | 1 | repair set of adjustment device | pochette de rép. du rattrapeur | |
| 6 | Ring | | 1 | ring | anneau | |
| 7 | Mutter | | 1 | nut | écrou | |
| 14 | Schraube | | 1 | screw | vis | |
| 15 | Druckfeder | | 1 | pressure spring | ressort de compression | |
| 16 | Druckfeder | | 1 | pressure spring | ressort de compression | |
| 17 | Bolzen | | 1 | bolt | goujon | |
| 18 | Schraube | | 1 | screw | vis | |
| | Reparatursatz Dichtung | 12 999 063 | 1 | repair set of seal | pochette de rép. du joint | |
| 11 | Dichtungskappe | | 1 | seal cap | chapeau d'étanchéité | |
| 12 | Dichtungskappe | | 1 | seal cap | chapeau d'étanchéité | |
| 13 | Schlauchschelle | | 2 | hose clamp | tuyau collier | |